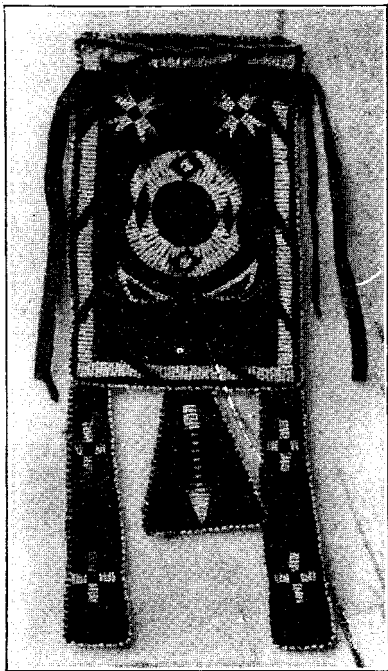


- 241 Tulip Bags. Same as No. 240,
only heavily beaded.....\$2.00
- 242 Tulip Bag. Same as No. 241, only
of black velvet skin and edge of
cut steel beads, and designs in
white and steel. Very elegant.....\$2.25



No. 245

- 245 Grey Flat Bag. See illustration.
Made of grey suede skin and