

B _____
C _____
To be red Cathin^{te}, with incised design (on top) filled in with some lustreless dead black (vegetable?) matth - pitch?

Perhaps this is too heavy

BUFFALO PIPE.

Actual Size

Design - a buffalo track

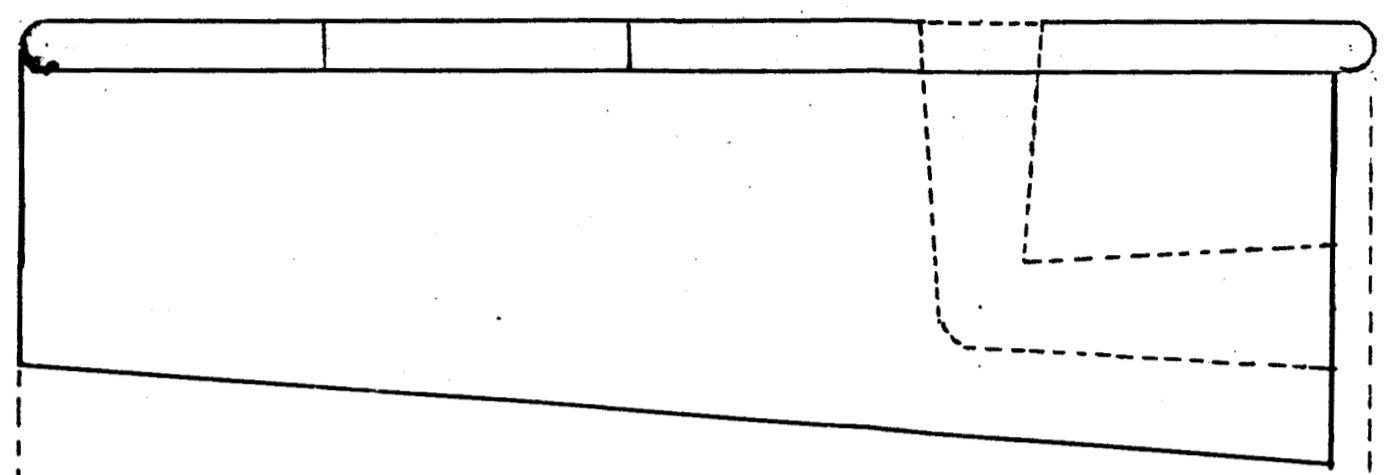


Fig. A.

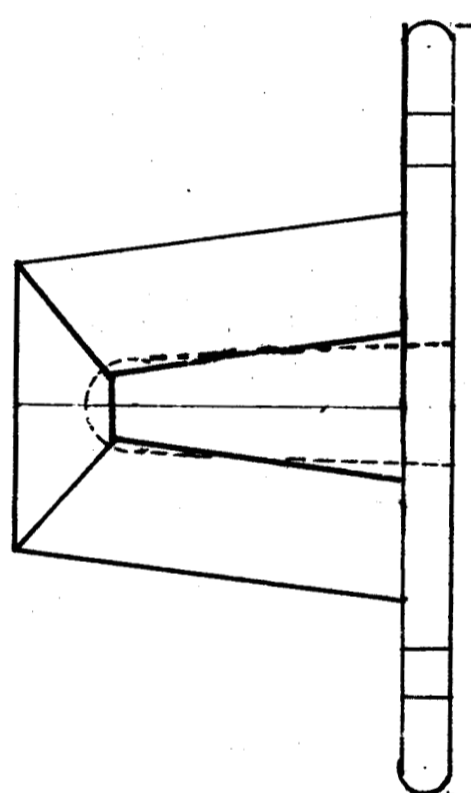


Fig. D.

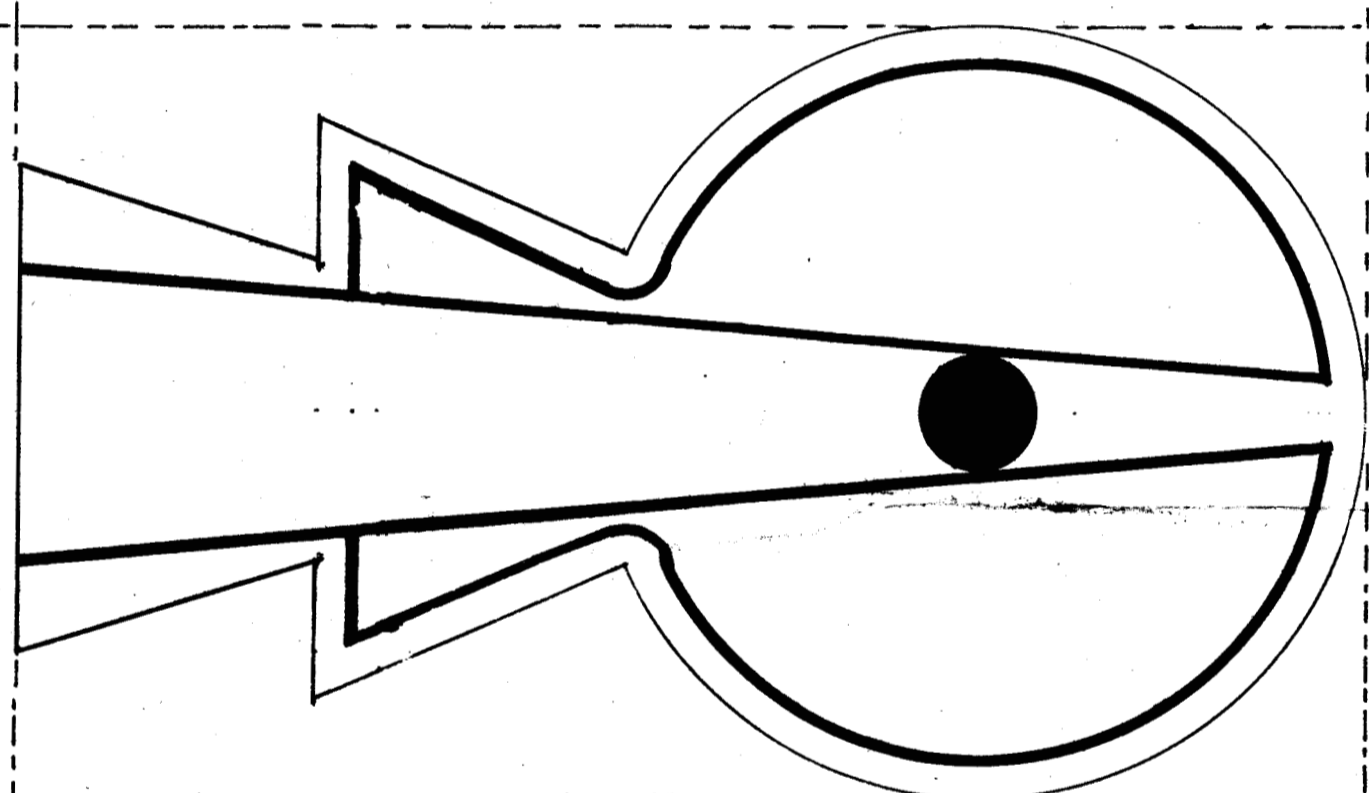


Fig. B.

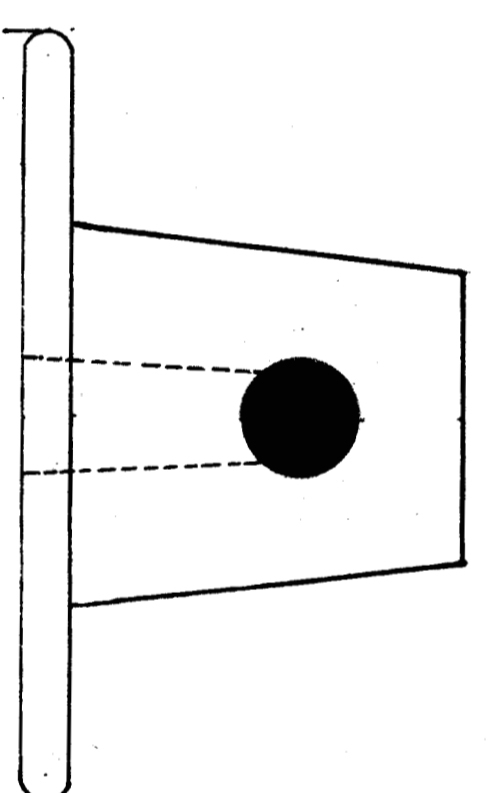


Fig. E.

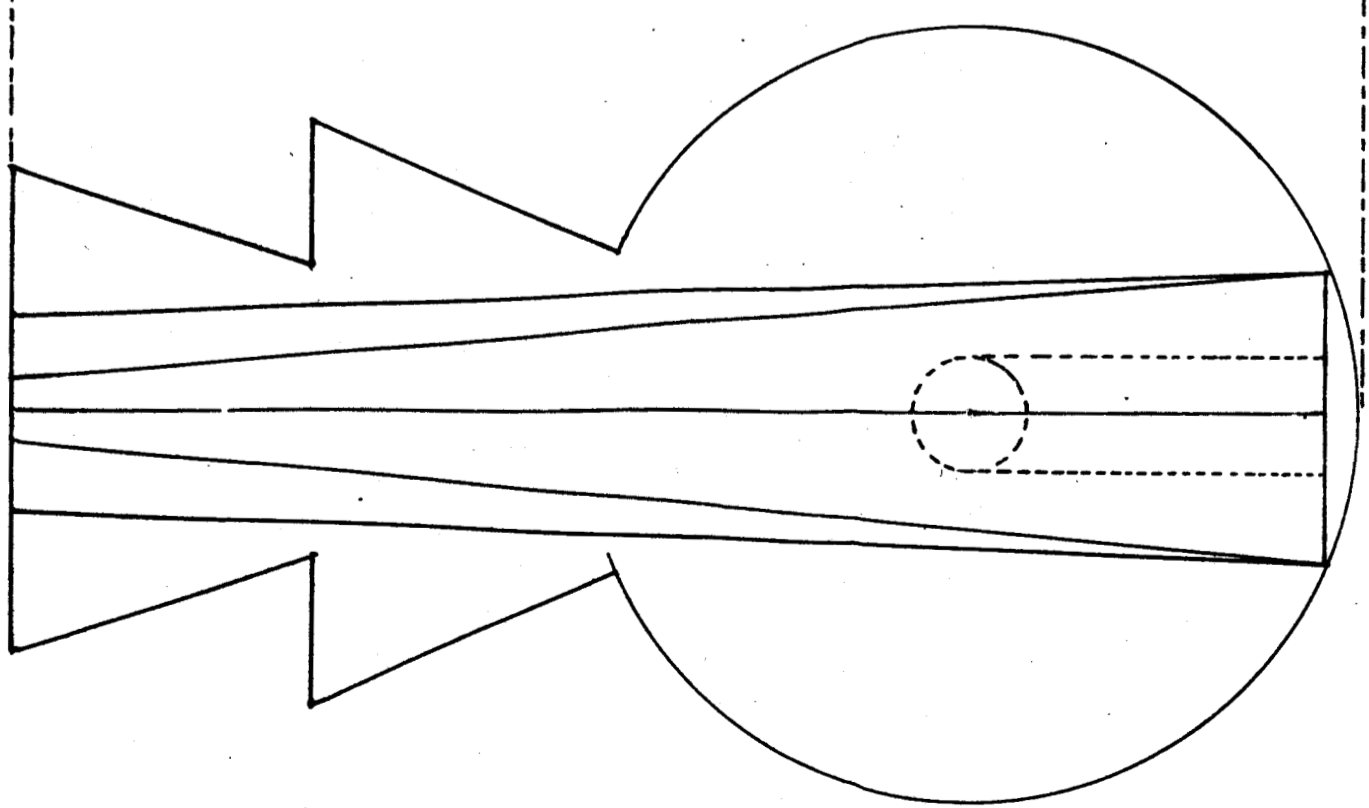


Fig. C.

- Fig. A = Side
- Fig. B = Top
- Fig. C = Bottom
- Fig. D = Butt-end
- Fig. E = Stem-end