

**MRS. LEWIS C. LAWSON**

**PRESENTS**

**MISS MAXINE CUTLIP**

**IN PIANO RECITAL**

**ASSISTED BY**

**MISS MARINE LAWRENCE, SOPRANO**

**AND**

**MISS BLANCHE CORDELL, READER**

---

**WEWOKA, JUNE TWENTY SEVENTH**

Humoresque.....Rachmaninoff

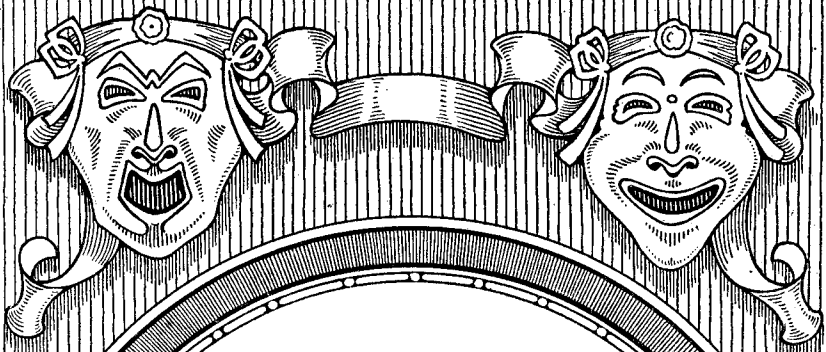
Perpetual Motion.....Mac Dowell

Beading—(a) Sundried .....Edna E. Ferber  
(b)—Hagar.....

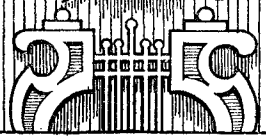
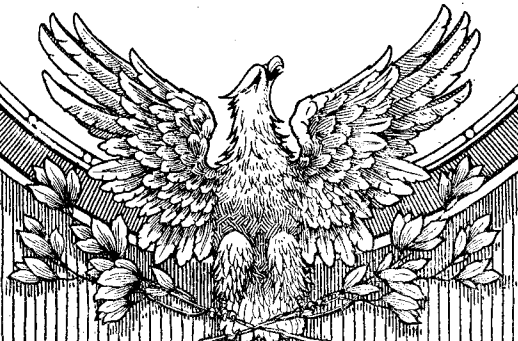
Fantasia C Minor .....Bach  
The Lark.....Balakirkew

Vocal Solo—The Wind's In the South.....  
.....John Prindle Scott

Rhapsodie No. 2.....Liszt



NEW  
NATIONAL  
THEATRE



WASHINGTON · D · C ·

# STARTING SUNDAY

Matinees Wednesday and Saturday

---

Direct from Chicago Run and  
En Route to Broadway  
for the Summer

# Satires of 1920

with

FANCHON and MARCO

and

24 MOST BEAUTIFUL GIRLS 24  
IN THE WORLD

A MUSICAL REVUE PEPPY



LUCILLE HARMON  
with the "Satires of 1920," opening at  
the New National Theatre, Sunday  
Night, May 15. Matinees  
Wednesday and  
Saturday.

## PLUYM

*Tailored Attire for the  
Fashionable Woman*

*Lines into which char-  
acter is wrought by un-  
paralleled tailoring art,  
fitting that subtly incor-  
porates distinction—a  
PLUYM tailored Street  
or Riding Habit is a  
work, a dress achieve-  
ment, an indisputable  
prototype of fashion ex-  
quisiteness.*

## SPRING

**Sport, Tailored and  
Formal Suits---  
Wraps**

**Riding Habits of  
Model Perfection**

*The personal supervision  
of Mr. L. Karchem in  
the production and  
fitting of your  
garments*

## PLUYM

1220

*Connecticut Ave.*

Phone Franklin 4149

# 樓東遠 FAR EAST RESTAURANT

THE NEW AND MODERN

An Oriental Restaurant of the Highest Character—Excellent Service—Best Chinese Cooking—Separate Rooms for Ladies—Special Attention to AFTER THEATRE PARTIES

MR. DER DOO, Proprietor, 415 13th STREET

Across the Street From This Theatre

Phone Franklin 2645

TELEPHONE  
F. 7249

## 園茶東遠

BENJAMIN D. FONG,  
Manager

### FAR EAST TEA GARDEN

1412 NEW YORK AVENUE

Chinese-American Dishes of Excellence

The Most Beautiful Chinese Restaurant in Washington. Special American and Chinese Dishes from 11 a. m. to 1 a. m.  
AFTER THEATRE PARTIES GIVEN SPECIAL ATTENTION MR. DER DOO, Proprietor

*Emblem and Pierce*

## BICYCLES

*Cleveland Motor Cycles*

**Harry F. Seamark**

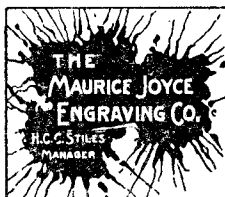
Southeast Corner 6th and G Streets N. W.

LET YOUR PRINTING  
IDENTIFY YOU

We believe "what's worth  
printing is worth printing  
well."

**NATIONAL PUBLISHING CO.**

1222 H STREET N. W.



THE MAURICE JOYCE  
ENGRAVING CO.  
H.C. STILES  
MANAGER

THE PRINCIPAL  
PHOTO-ENGRAVING  
PLANT SOUTH  
OF NEW YORK  
EVENING STAR BUILDING

Rent an **UNDERWOOD TYPEWRITER**

Then you will discover why it has won popularity

"IT'S THE BEST"

"The Machine you will eventually buy"

**UNDERWOOD TYPEWRITER CO.**

1413 New York Ave. N. W., Washington, D. C.

# 東方樓

## ORIENTAL RESTAURANT

1347 Penna. Ave. N. W.

(Municipal Bldg. Just Across the Way)

American and Chinese Cuisine

Up-to-Date, Modern, Sanitary

Imported Chinese Delicacies

Special Attention to After-Theater Parties

# STARTING SUNDAY

Matinees Wednesday and Saturday

---

Direct from Chicago Run and  
En Route to Broadway  
for the Summer

# Satires of 1920

with

FANCHON and MARCO

and

**24** MOST BEAUTIFUL GIRLS **24**  
IN THE WORLD

A MUSICAL REVUE PEPPY

CHOICE CUT FLOWERS

**SHAFFER'S**

FLORAL DECORATIONS

900 14TH STREET N. W.

MEMBER FLORIST  
TELEGRAPH DELIVERY

TELEPHONES:  
MAIN 2416-17-18  
FRANKLIN 2362

**FLORIST**

THE ORIGINAL

*Velatis*

Famous for Caramels since 1866

ONE STORE

9th & G Sts. N. W.

Pure and delicious confections made fresh every hour

**Hotel  
Occidental**

The Place to Dine

No Music

**Only Food  
and Service**

Under Personal Direction of  
**GUS BUCHHOLZ & SON**  
Proprietors

**Baskets of Flowers**

BIRTHDAY ANNIVERSARIES

OR  
FLOWERS TO CHEER UP  
THE SICK ROOM

**BLACKISTONE**

Fourteenth and H Streets Northwest,  
Washington, D. C.

**STARTING SUNDAY**

Matinees Wednesday and Saturday

Seats Thursday

**SATIRES  
OF  
1920**

Chicago critics were not prepared for what transpired when the "Satires of 1920" arrived at the Olympic Theatre. They had an idea that the revue was one of the usual things from the West and went to the premier prepared to jest, but remained to praise. At least, that is the way it would appear. For example, O. L. Hall of the Journal said of the show: "It avoids boring its audience." This is an admission, for there are many shows that make Chicago, according to the records, who are nothing if not boresome.

The reviewer of the Chicago Journal of Commerce, a conservative publication, printed: "The Satires of 1920," now on view at the Olympic, was given a welcome the cordiality of which might well arouse the envy of some attractions which have been more pretentiously heralded." Frederick W. McQuig, of the American, wrote enthusiastically as follows in part: "A generous number of funmakers swing the performance along with a whoop. The 'Satires' has been produced with the utmost artistry, gowns, scenes and girls showing good taste and care in the selecting. The revue, like everything from California, is a winner."

Percy Hammond, dean of Chicago critics, and the most feared of all reviewers, had the following in the Tribune: "The hit of the show are a vaudeville duo called Nelson and Chain, bully humorists and burlesquers, who manage to make a lot of fun without once insulting their audience. Their mind reading travesty is a master piece of its kind." "Another attractive participant," writes Charles Collins in the Post, "in the performance is Eva Clark, the prima donna who sings better than any ever heard in a New York revue. She is a coloratura soprano. She has most of the Galli-Curci tricks and her voice is rich, lovely and admirably trained." Amy Leslie, dramatic critic of the News, said in part: "The Stryker girl is a whirlwind of good looks, and acrobatic grace, and all people who sing, roar out their ditties healthfully and with fiery energy." So much for the newspaper reviewers.

This attraction, without change or amendment, will come to this Theatre for one week beginning Sunday, May 15, and promises to create even a greater furore than it did in Chicago, a city surfeited with shows.



*"If it's made of Paper you can  
get it at Andrews'."*

DINNER FAVORS      DINNER CARDS  
DECORATIONS      DANCE PROGRAMS  
TALLY CARDS      NOISE MAKERS  
INVITATIONS

—and an infinity of other little effects of infinite importance in making any social gathering more enjoyable.

On occasion, see if we haven't what you want.

**R. P. ANDREWS PAPER CO.**

**727-31 Thirteenth St.      Phone Franklin 6060**

**Branches: Norfolk, Va., and York, Pa.**

WE FULFILL OUR PROMISES

**STEINWAY**

and Other Leading Pianos



Player Pianos - Victrolas - Music

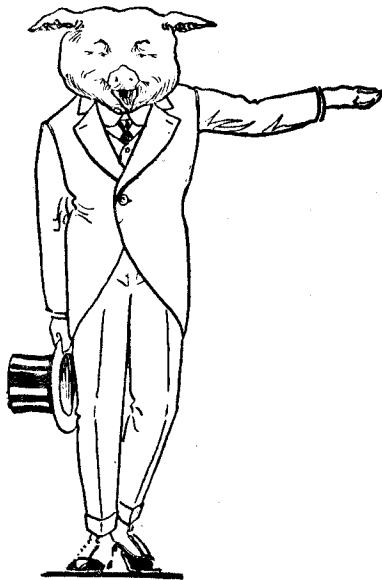
Our patrons will always find the lowest prices consistent with quality quoted here. We guarantee everything we sell to be as represented or money refunded.      ∴      ∴      ∴

**E. F. DROOP & SONS CO.**

1300 G STREET

Established 1857

Southern Agents



# AUTH'S HAMS and BACON

*The Quality Kind That  
Delights Old and Young,  
Just Try Them.*

**AT YOUR GROCERS**

**N. Auth Provision Co.**  
**623 D Street S. W.**

## NEW NATIONAL THEATRE

WASHINGTON, D. C.

Phone Main 501

DIRECTION, W. H. RAPLEY

The only theatre in Washington offering exclusively American and foreign stars of the first rank.

### CHIEFS OF STAFF

#### NEW NATIONAL THEATRE

Business Department	W H Fowler
Financial Department	S E Cochran
Public Comfort Department	Henry Talbert
Advertising Department	Zach Walsky
Stage Department	M A Sherwood
Music Department	Chris Arth
Properties Department	W H Burrows
Electrical Department	W A Burke
Engineer Department	Ferdinand Pearson
Cleaning Department	Carrie Gury

The evening performances at this theatre begin promptly at 8:20 o'clock; the matinees promptly at 2:20 o'clock. The doors are opened half an hour earlier.

The box office will be open from 9 a. m. to 10 p. m.

Tickets ordered in advance will be held until hour specified; never later than 2 p. m. for matinees and 8 p. m. for evening performances.

The advance sale for coming attractions opens on the preceding Thursday morning at 9 o'clock.

Ladies' retiring rooms on right of foyer on the main floor and on right of foyer in balcony, with competent maids in charge.

Gentlemen's smoking room at left of main lobby. Smoking is not permitted in the lobby or on the entrance steps.

Physicians and other patrons anticipating emergency calls will find a register card at the box office.

A free check room is located in the main foyer for the checking of a limited number of coats, cloaks, and umbrellas at owners' risk. A hat rack will be found on each chair.

The ushers and other attaches of this theatre are not permitted to ask or receive fees of any description.

Patrons finding lost articles are requested to leave them at the box office. The name and address of the finder will be recorded.

Ushers will call a taxicab when requested by patrons.

# S. Kann Sons Co.

"THE BUSY CORNER" PENNA. AVE. AT 8 TH. ST.

Open 9:15 A. M. to 6 P. M.

---

---

## CLASS NIGHT AND GRADUATION FROCKS

—So exquisitely and essentially youthful in every little ruffle, and graceful line that the happy young woman who graduates from school and college life will be still happier to step out from the school room into life's larger realm arrayed in these lovely frocks.

—Dainty imported Swiss organdies, with ruffles of the material trimmed with silk ribbon to match, the belt ornamented with a corsage bouquet.

—Frocks of finest quality georgette crepe. The skirts as well as the waists are ornamented with graduated tucks, and the dress is finished with a sash which ends in a large bow in the back.

—Chiffon dresses are made with many tiny ruffles, others with wide tucks, and some have dainty collars finished with hemstitching in self color. Sizes range from 14 to 20 years; also women's sizes 36 to 40 bust.

PRICED AT—

\$25.00, \$29.75 and \$35.00

—Kann's—Second Floor—Dress Store.

After the Theatre

*SHOREHAM HOTEL*

H Street at 15th

**Cuisine and Service Unexcelled**

HEALTH PASTRIES 100% PURE

HEALTH CANDIES

*Brownley's*  
REGISTERED

**LUNCH WITH US TODAY**

**DELICIOUS**

SANDWICHES, CAKES, PIES, CREAM AND FRUIT  
TARTS, NOVELTY PASTRIES, ICE CREAM,  
CUSTARD, ICES AND

**REAL COFFEE**

13TH AND F STREETS

1203-9 G STREET



IMPROVE your theatre  
pleasure by the genial mood  
engendered by dinner be-  
fore the performance at

**WALLIS'**

12th and G Streets, N. W.

# NEW NATIONAL THEATRE

DIRECTION

W.H.RAPLEY

BUSINESS MANAGEMENT

W.H.FOWLER

WEEK BEGINNING MONDAY, MAY 9, 1921

Matinees Wednesday and Saturday

A. L. ERLANGER Presents

## LAURETTE TAYLOR

(With A. E. MATTHEWS)

—in—

## “PEG O’ MY HEART”

A Comedy of Youth by

J. HARTLEY MANNERS

(Produced Under the Personal Direction of the Author)

“Oh, there’s nothing half so sweet in life as love’s young dream.”

“JERRY”	-----	MR. A. E. MATTHEWS	---	Played by him	1,137	times
ALARIC	-----	MR. PERCY AMES	-----	Played by him	500	times
HAWKES	-----	MR. GEORGE RIDDELL	---	Played by him	128	times
BRENT	-----	MR. THOS. A. BRAIDON	---	Played by him	128	times
JARVIS	-----	MR. GEORGE SYDENHAM		Played by him	128	times
“MICHAEL”	-----	MICHAEL	-----	Played by him	1,110	times
MRS. CHICHESTER	---	MISS MAUD MILTON	---	Played by her	128	times
ETHEL	-----	MISS GRETA KEMBLE				
		COOPER	-----	Played by her	128	times
MAID	-----	MISS MILDRED POST	---	Played by her	137	times

and

“PEG” ----- MISS LAURETTE TAYLOR.--- For the 1,238th time.

# Wardman Park Hotel

Connecticut Avenue and Woodley Road

GLASS ENCLOSED DINING VERANDA  
FOR LUNCHEON AND DINNER

SUPPER DANCE FROM 10 P. M. TO 12 P. M.

DINNER DANCE SATURDAY EVENINGS  
FROM 7.30 TO 12.30

CALL COLUMBIA 10,400 FOR TABLE RESERVATIONS

## STARTING SUNDAY

Matinees Wednesday and Saturday

SAVE YOUR VOTES FOR

# "SATIRES OF 1920"

THE MUSICAL REVUE PEPPY

—WITH—

FANCHON AND MARCO

—AND—

24 Most Beautiful Girls In The World 24

Direct From Twelve Smashing Weeks  
Olympic Theatre, Chicago



The Washington  
Washington D.C.

After the Theatre  
Go to the  
**Salon des Nations**

Dancing Wonderful Music

**PROGRAM**

**The Scenes of the Comedy**

- ACT I.—The Coming of Peg.  
ACT II.—The Rebellion of Peg.  
ACT III.—Peg o' My Heart.

The entire action of the comedy passes in the living room of Regal Villa, Mrs. Chichester's house in Scarborough, England, in early summer.

One month elapses between Acts I and II.

A night passes between Acts II and III.

NOTE—The curtain will descend in Act II to denote the passing of a few hours.

**J. H. SMALL & SONS  
FLORISTS**

15th and H Streets  
Washington, D. C.

New York, Waldorf-Astoria and  
505 Madison Ave., at 52nd St.  
Telephone Main 158

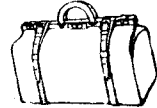
**If you cannot decide--  
let us suggest**

**LOUISE  
FLOWER  
SHOP**

Conn. Ave. at N St. N. W.

Member Florist  
Telegraph Delivery

Phones Frank'n 3841-3842-3579



**LUTZ & COMPANY**

ESTB. 1804

**TRUNKS, BAGS and  
LEATHER GOODS**

"Of the Better Grade"

Best European and American  
Gloves

Harness and Saddlery

**1325 G STREET**

*Stationery  
a Fixity*

*It is in taste to  
permanently have  
the same style sta-  
tionery. Comman-  
deer our experience,  
come and hear our  
suggestions for dig-  
nifying and beauti-  
fying your stationery  
through Brewood  
engraving.*

**BREWOOD**  
Engravers & Stationers  
519-13th St. Just Below

**SHAW & BROWN CO.**

1114 F STREET

*Pearls and Precious Stones*



A biscuit of genuine nourishment  
and wonderful flavor

NATIONAL BISCUIT COMPANY

COCONUT TAFFY BAR

## THE CHINA RESTAURANT

606 13th St. N. W.

(Between F and G Streets)

In the Heart of the Shopping District

The finest and most popular  
American and Chinese Restaurant  
in the city

*Special Attention to  
After the Theatre Parties  
American Service*

Regular Luncheon 11 a. m. to 2 p. m.

Regular Dinner 5 to 8 p. m.

Special Sunday Dinners 11:30 a. m. to 8 p. m.



## The New Ebbitt Cafe

FOURTEENTH AT F

You will get up from the table  
SATISFIED with what has been  
served and the manner in which  
it has been served.

Breeskin Music—and a dance  
if you wish.



## PROGRAMME

Scenery by the Robert Law Studios.

For A. L. Erlanger

Manager ----- W. H. Wright

### Musical Programme

Overture—Irish Airs.

Pot-pourri—"Erminie" ----- Jakobowski

Valse—"Mauve" ----- }  
Morceau—"Salut d'Amour" ----- Elgar

There will be an intermission of ten minutes between the First and Second Acts and eight minutes between the Second and Third Acts.

## STARTING SUNDAY

Matinees Wednesday and Saturday

Seats Thursday

SAVE YOUR VOTES FOR

# SATIRES OF 1920

THE MUSICAL REVUE PEPPY

—WITH—

## FANCHON AND MARCO

—AND—

24--Most Beautiful Girls In The World--24

Direct from Twelve Smashing Weeks  
Olympic Theatre, Chicago

STIEFF PIANOS USED EXCLUSIVELY BY NEW  
NATIONAL THEATRE

PROGRAMS PRINTED AND PUBLISHED BY THE  
NATIONAL PUBLISHING COMPANY

EXITS INDICATED BY RED LIGHTS

## GARDEN FURNISHING

BIRD BATHS

SUN DIALS

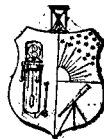
GAZING GLOBES

in Marble, Stone and Terra Cotta

LALLY-ROHLADER CO.

230-232-234 Woodward Building

Successors to J. H. Corning



**Paul's**  
JEWELERS

## GIFTS

for

## WEDDINGS

1322 G Street N. W.

Opposite Epiphany Church

## STORAGE

Estimates for

**Moving, Packing, Shipping**

LITTLEFIELD, ALVORD & CO.

15th and Pa. Ave. N. W.

**National  
Publishing Co.**

## PRINTERS

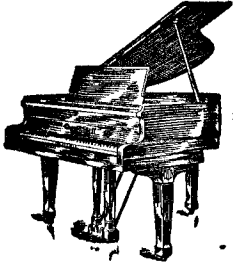
1220-22 H St.

N. W.

## COMING SOON

Sam H. Harris will present "Zizi," a farcical comedy by Fred de Gresac and Fred Jackson, being staged under the direction of Sam Forrest and the cast embraces, among others, Irene Fenwick, Louis Bennison, Carlotta Monterey, Morgan Wallace, Helen Lowell, Kenneth Hill and George Graham. "Zizi," will be revealed to the playgoing public at the Apollo Theatre, Atlantic City, on May 16.

**STIEFF PIANOS USED EXCLUSIVELY IN THIS THEATRE**



The Greatest Achievements  
in Scientific Construction  
Are Embodied in our

*Pette Grand*

ESTABLISHED 1842

THE  
ARTISTIC **Stieff** PIANO

We Now Occupy the

Entire Building, 1108 F St. N. W.

CHAS. M. STIEFF, Inc.

J. C. CONLIFF,  
Manager

Evening Gowns

Slippers

*Lereh's*

**FRENCH DRY CLEANERS  
AND DYERS**

ACHILLE E. BURKLIN, Prop.

826 12th St. N. W.

Phone, Main 2022

*Particular Attention is Given to the Cleaning of  
Gentlemen's Wearing Apparel  
of all kinds.*

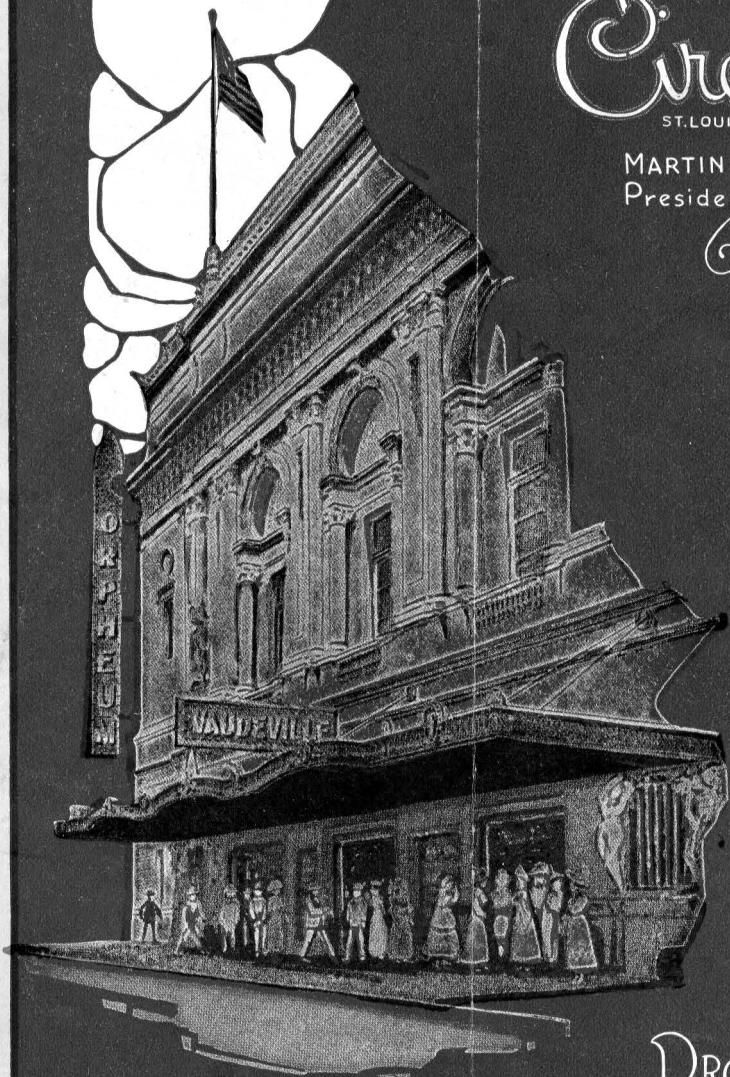
Furs

Laces

# Orpheum Circuit

ST. LOUIS

MARTIN BECK  
President



PROGRAM  
Magazine

# Quality Shows in Topsy Tose



*- For Sale at the Better Shops -*

GRAPHIC STUDIO  
ST. LOUIS

**ELY & WALKER, Wholesale Distributors**

# ORPHEUM CIRCUIT

—OF—

## VAUDEVILLE THEATRES

MARTIN BECK, President

OFFICE: PALACE THEATRE BUILDING

NEW YORK CITY

EDW. J. SULLIVAN, Resident Manager

Booking Department,  
Palace Theatre Building,  
New York, N. Y.

Executive Offices,  
State-Lake Building,  
Chicago, Ill.

Palace Music Hall, Chicago  
State-Lake Theatre, Chicago  
Palace-Orpheum Theatre, Milwaukee  
Orpheum Theatre, St. Louis  
Orpheum Theatre, Memphis  
Orpheum Theatre, New Orleans  
Orpheum Theatre, Kansas City  
Hennepin-Orpheum Theatre, Minnea-  
polis  
Orpheum Theatre, St. Paul  
Orpheum Theatre, Duluth  
Orpheum Theatre, Winnipeg  
Grand Theatre, Calgary

Orpheum Theatre, Vancouver  
Moore Theatre, Seattle  
Heilig Theatre, Portland  
Orpheum Theatre, San Francisco  
Orpheum Theatre, Oakland  
Orpheum Theatre, Los Angeles  
White Theatre, Fresno  
Clunie Theatre, Sacramento  
Orpheum Theatre, Salt Lake City  
Orpheum Theatre, Denver  
Orpheum Theatre, Lincoln  
Orpheum Theatre, Omaha  
Orpheum Theatre, Des Moines

Also Owning and Operating the Following Popular Price Theatres:

Mainstreet Theatre, Kansas City  
Golden Gate Theatre, San Francisco  
Hillstreet Theatre, Los Angeles  
Majestic Theatre, Chicago  
Majestic Theatre, Milwaukee  
Rialto Theatre, St. Louis  
Grand Opera House, St. Louis  
Palace Theatre, New Orleans  
Seventh Street Theatre, Minneapolis

Lincoln Hippodrome, Chicago  
American Theatre, Chicago  
Orpheum Theatre, Sioux City  
Palace Theatre, Rockford  
Majestic Theatre, Springfield  
Orpheum Theatre, Madison  
Orpheum Theatre, Champaign  
Columbia Theatre, Davenport  
Empress Theatre, Decatur

And The Western Vaudeville Managers' Association,  
State-Lake Building, Chicago.

ORPHEUM AT ST. LOUIS. PHONE, OLIVE 4767.

PRICES FOR SEASON 1922-23

MATINEES (Monday to Friday Excepting any Holiday)

15c-25c-35c-50c. Boxes and Loges, 75c

EVENINGS (Monday to Friday, Excepting any Holiday)

25c-35c-50c-75c-\$1.00. Boxes and Loges, \$1.25

SATURDAY, SUNDAY AND ALL HOLIDAY EVENINGS

25c-35c-50c-75c-\$1.00-\$1.25. Boxes and Loges, \$1.25

SATURDAY AND SUNDAY MATS. 15c-25c-35c-50c-75c

ALL HOLIDAY MATINEES—25c-35c-50c-75c-\$1.00

WAR TAX ADDITIONAL ON ALL TICKETS

Ticket office open daily from 9:30 A. M. to 9:30 P. M.

Prompt attention given mail orders.

### TO OUR PATRONS

The attaches of this house are not permitted to accept fees or gratuities of any kind. It is intended that the admission fee shall cover all the advantages offered by the superior service of the Orpheum.

Patrons are requested to report to the manager any inattention or incivility on the part of any attache of this theatre.

In the presentation of Advanced Vaudeville by the Orpheum Circuit, it is its constant aim to prevent the use of a single word, expression or

situation that might offend the intelligent, refined and cultured.

The management suggests that physicians and others in the audience who may expect a summons by telephone or messenger during the performance leave their seat numbers and their names at the main door.

Children in arms will not be admitted to any performance. Full tickets required for all.

Ladies are politely requested to remove their hats in all parts of theatre.

# LADIES:

*Do You Know That*

## DAVID BELAIS' WHITE GOLD

(Pat. Feb. 20, 1920)

is revolutionizing the jewelry industry of the *world*? It is pure Gold changed to a beautiful Blue White color,

### 18 KARAT FINE

and is guaranteed to stay white

*Always Insist Upon David Belais' White Gold*

"GIFTS THAT LAST"

# Billiken Shoes



When to the Show  
our Parents go  
They Think we're  
tucked in bed  
But we're so happy  
in Billiken Shoes  
That we're romping  
around instead

## Billiken Shoes

MADE ONLY BY

### McElroy Sloan Shoe Co.

ST. LOUIS, MO.

AMERICA'S BEST SHOES FOR KIDDIES  
SOLD BY A LEADING RETAILER IN EVERY CITY



# CONROY'S

The largest institution  
in America merchandising  
Pianos of all types  
—exclusively—

Prices \$395 ~ \$3500

1100 Olive

**NOTICE:** This Theatre, under normal conditions, with every seat occupied, can be emptied in less than two minutes. LOOK around, now choose the nearest exit to your seat and in case of disturbance of any kind, to avoid the danger of panic, WALK (DO NOT RUN) to that exit.

WEEK BEGINNING SUNDAY, OCTOBER 29, 1922.

**A**

## FRANK PANUS' BOYS

Frank J. Panus, Director

Overture—"Merry Wives of Windsor".....Nicoli  
"Queen of the Orient".....Arr. by M. Terr  
Selection—"Adele".....Reinhardt  
Exit—"Come Along".....Layton

# SAINT LOUIS INN CAFE

•THE MOST POPULAR CAFE OF ST. LOUIS.  
AMERICAN AND CHINESE COOKING

Merchants and Shoppers Lunch, 50c

Table D'Hote Dinner, \$1, 5 to 8 p. m. Sunday Dinner \$1.25 11:30 to 8:30 p. m.

Service from 11 a. m. to 2 a. m.

**Music**

By Hiesborger's Orchestra

**704-6 PINE STREET**

**NEAR SEVENTH**

**Dancing**

8 to 8 and 10 to 12 p. m.



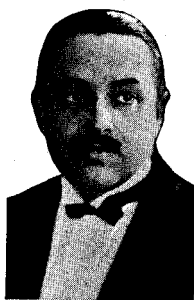
JACK FORD  
Director

Hear the Celebrated



MASTERS OF

**MELODY-RHYTHM-JAZZ**



C. E. HOFFMAN  
Asst. Dir. & Bus. Mgr.

AFTER THE SHOW  
DANCE AT THE

**'ARCADIA'**  
**DANCING**  
OLIVE ST. NEAR GRAND

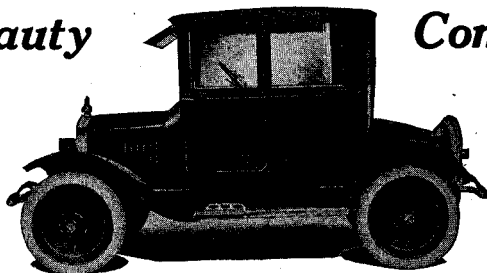
—EVERY—  
**TUESDAY**  
**THURSDAY**

—EVERY—  
**SATURDAY**  
**SUNDAY**

Dancing 8:30 to 12:30

MATINEE EVERY SUNDAY

*Beauty*



*Comfort*

\$299 F. O. B. ST. LOUIS

A Real 4-Passenger Body that fits any Ford Chassis. Seats 4 People in Comfort. Exceptionally Roomy, Beautiful Painting and Upholstering.

*Your Old Body Taken in Trade*

**On Display at 3040 Locust St.**  
**IMMEDIATE DELIVERY**

Factories: 1125 N. Broadway, 1310 S. 13th St.

**Coupe DeLuxe Body Co.**



**B**

**AESOP'S FILM FABLES**

PAUL TERRY, Cartoonist

**C**

**TUSCANO BROTHERS**

Skillful Wielders of Roman Axes

CONROY'S, Eleventh at Olive

**D**

"Scream"                      Sig                      Johnnie  
**WELCH                      MEALY                      MONTROSE**

"Those Surprise Boys"

**E**

**FLO LEWIS**

From  
**BERNHEART TO HEARTBURN**  
in  
Silks and Laces  
Assisted by Jesse Greer

**F**

**MINSTREL MONARCHS**

present  
A Unique Offering in Minstrelsy  
with  
John E. Gorman                      Billy Golden  
Chas. Udell                              Chas. Whyte  
Billy Tate



**Teasing  
Dance  
Music**

It is new—delightfully  
different from anything  
you've ever heard.  
Whether you dance or  
not, you will enjoy it.

*Every evening, except  
Sunday, from 10:30*

**At the STATLER**

IN 25¢ BOXES

# Anti-Kamnia

(OPPOSED TO PAIN)

FOR HEADACHES, NEURALGIAS, COLDS, WOMEN'S ACHES & ILLS

**AK**

Ask For A-K Tabs

## TABLETS

## MILESTONES in a CITY'S PROGRESS

The Melsheimer establishments in St. Louis have kept pace with the city's progress. Sixty years of catering service to St. Louisans and visitors to our city have made us internationally known as "St. Louis' Best Place to Eat."

Before the show dine at Downtown Melsheimer's, directly opposite the Orpheum Theater. A wide variety of ready and a la carte dishes is always to be had. An excellent table d'hote dinner at \$1.25 per cover is a nightly feature. Music from 6 to 8.

After the show tea room service at West-End Melsheimer's. Delicious pastries, salads, sandwiches, ice creams, etc.

## Melsheimer Restaurants

DOWNTOWN AT  
Ninth and Washington

WEST-END AT  
De Balviere and Pershing



**Better Than Pills  
For Liver Ills.**

You can't feel so good but what **NR** will make you feel better.

Get a 25c. Box.

**Nature's Remedy**  
REG. U.S. PAT. OFFICE  
NR-TABLETS-NR

AFFECTS ON THE LIVER, KIDNEYS AND BOWELS

PREPARED BY  
A. H. LEWIS  
MEDICINE CO.  
ST. LOUIS, U.S.A.

25 TABLETS-NR

Your Druggist

A GOOD INVESTMENT

# Diamonds

They possess a permanent value and last a lifetime.

JEWELRY

## Wm. Krankel Loan Co.

a name that has been a promise for 37 years

505 PINE STREET

**G**

**MAE & ROSE WILTON**

Clever Youthful Entertainers

**H**

**LIONEL ATWILL**

(By Courtesy of David Belasco)  
And Specially Selected Company

In  
"THE WHITE FACED FOOL"  
by Edgar Allan Woolf

Characters:

Mons. Antoine Dejazet, a famous French Actor.....LIONEL ATWILL  
Gabrielle Dejazet, his wife.....Elsie Mackay  
Picard, his valet.....Will Hindson  
Mons. Philippe Croisset, a French tragedian of the first  
rank.....Manart Kippen  
Mons. Max Hadet, the manager.....Gustave Rolland  
Pierrett.....Daphne Malone  
SCENE 1—Dejazet's dressing room in a theatre, Paris  
SCENE 2—The Stage, during the action of a new play, "Pierrot"  
SCENE 3—The dressing room again  
Staged by Lionel Atwill

**I**

**BERT FITZGIBBON**

The Original Daffy Dill and Brother Lew

**J**

**MARGARET SEVERN**

In  
"MAID OF MOODS"  
with

**ANTONIO CANSINO and PACO CANSINO**

and  
**RUBEN BECKWITH**

1. Fantasia—Oriental.....Miss Severn
  2. Valse Aragonnes.....The Cansinos
  3. Swan Dance.....Miss Severn
  4. Specialty.....Mr. Beckwith
  5. Mask Dances.....Miss Severn
    - (a) Vampire
    - (b) Fear
    - (c) Silly Doll
  6. Bolero.....The Cansinos
  7. Valse Caprice.....Miss Severn
  8. Finale.....Miss Severn and the Cansinos
- Masks by Benda

**K**

**PICTURES OF INTEREST**

Worth Waiting to See

**O**

When used, takes place of Missing Act

**X**

When used, means Something EXTRA Added

**THE FIRST ACT**

The first act in the drama of "Moving Day" is to engage a moving company you can depend on. The General Warehousing Company, Delmar at Euclid, owning and operating the American Storage and Moving Company, J. Brown Storage Company, Langan and Taylor Storage and Moving Company, R. U. Leonori Auction and Storage Company.



LOOK AT THIS  
FOR A BILL  
of  
VAUDEVILLE



The Vaudeville Debut of  
**RAYMOND HITCHCOCK**  
"Hitchy Koo Himself"

THE  
FOUR  
CAMERONS

EDDIE KANE  
&  
JAY HERMAN

GUY &  
PEARL  
MAGLEY

MANUEL  
&  
WALTERS

One of America's Most Delightful Character Actresses

**HARRIET REMPEL**

in

Tom Barry's Delightful Romance of Circus Life

"THE HEART OF A CLOWN"

OSBORNE TRIO, NOVEL AMUSING EQUILIBRISTS

LANGDON' McCORMICK'S  
Melodramatic Sensational New York Success

"The Storm"

with

**EDWARD ARNOLD**

First time in Vaudeville after  
its long run in New York,  
Chicago and London, with  
all its stupendous Scenery  
and Electrical Effect.



Music

# The ORIENT

CHINESE AND AMERICAN RESTAURANT.  
419 NORTH SIXTH STREET

St. Louis' foremost Restaurant in the attractiveness of its congenial environment and refined, home-like atmosphere. the tasteful simplicity of its appointments and the high standard attained in Chinese and American cuisine.

OPEN 11 A. M. to 2 A. M.

Innovation Luncheons, Afternoon Teas in Private Dining Room. A day's notice is required for private parties.

BILL OF FARE, A LA CARTE

St. Louis' most fashionable after theatre rendezvous for delicious suppers and fountain refreshments

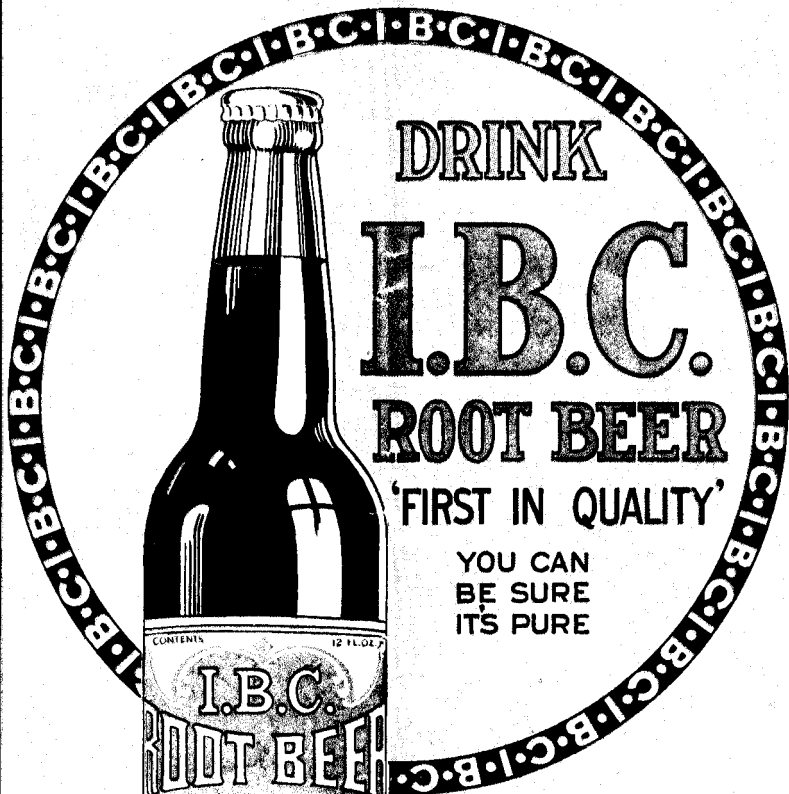
# Ibsens



## Tea Room Candies

Favored by  
the Elite

910-912 Olive St.



DRINK

I.B.C.

ROOT BEER

'FIRST IN QUALITY'

YOU CAN  
BE SURE  
IT'S PURE

CONTENTS 12 FL. OZ.  
I.B.C.  
ROOT BEER  
The Independent Breweries Company  
ST. LOUIS, MO.

The Independent Breweries Company

SIDNEY 4300  
VICTOR 3212



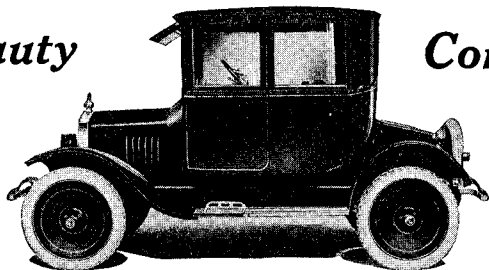
# AMERICAN THEATRE

SAINT LOUIS  
DIRECTION-KLAW and ERLANGER



Who is  
*Nancy Lee*  
?

*Beauty*



*Comfort*

\$299 F. O. B. ST. LOUIS

A Real 4-Passenger Body that fits any Ford Chassis. Seats 4 People in Comfort. Exceptionally Roomy, Beautiful Painting and Upholstering.

*Your Old Body Taken in Trade*

On Display at 3040 Locust Street  
**IMMEDIATE DELIVERY**

Factories: 1125 N. Broadway, 1310 S. 13th St.

**Coupe DeLuxe Body Co.**



# THE NATIONAL CITY BANK of ST. LOUIS

**CAPITAL, \$1,000,000.00**  
**SURPLUS AND UNDIVIDED PROFITS, \$300,000.00**

## DEPOSITS

July 12th, 1921 (Opening Day)	\$1,447,726.26
September 12th, 1921	\$3,276,163.66
November 12th, 1921	\$4,932,439.35
January 12th, 1922	\$5,386,366.92
March 11th, 1922	\$6,458,022.51
May 12, 1922	\$7,056,627.98
July 12, 1922 (1 Year Old)	\$8,167,919.22

**ACCOUNTS OF INDIVIDUALS, FIRMS, BANKS AND BANKERS SOLICITED.**  
**INTEREST PAID ON TIME AND SAVINGS DEPOSITS**  
**COURTESY, FAIRNESS AND EFFICIENT SERVICE**

\*Includes Public Deposits and Outstanding Cashier's Checks.

WEEK BEGINNING MONDAY, OCTOBER 30, 1922

WILLIAM HARRIS, Jr., presents

## John Drinkwater's **"ABRAHAM LINCOLN"** with Frank McGlynn

Staged by Lester Lonergan

Scenery, Costumes and Decorations by Livingston Platt

### CAST OF CHARACTERS

(In Order of Their Appearance)

A Chronicler .....	J. Colvil Dunn
Stone, a Farmer.....	Thomas Irwin
Cuffney, a Storekeeper.....	William Wadsworth
Susan, a Maid in Lincoln's Home.....	Bertha K. Wood
Mrs. Lincoln .....	Winifred Hanley
Mr. Lincoln .....	Frank McGlynn
Tucker, Chairman of Delegation.....	Forrest Davis

PROGRAM—Continued

# MADAM M. MARTELL

CLAIRVOYANT and  
SPIRIT MEDIUM

6131 Page Avenue, St. Louis, Mo.

Take Hodiament Car, Get off at Page, Walk West  
Few Doors—North Side of Street

Hours: Daily 11 a. m to 4 p. m.  
Closed All Day Saturday  
Sunday, 10:00 a. m. to 2:00 p. m.

Cabany 7550—PHONES— Delmar 2677-R



# SAINT LOUIS INN CAFE

• THE MOST POPULAR CAFE OF ST. LOUIS •  
AMERICAN AND CHINESE COOKING

Merchants and Shoppers Lunch, 50c

Table d'Hote Dinner \$1, 5 to 8 p. m. Sunday Dinner \$1.25, 11:30 to 8:30 p. m.

Special Attention Given to Afternoon Teas and After Theatre Parties

Service from 11 a. m. to 2 a. m.

Music

704-6 PINE STREET

Dancing

Near Seventh

6 to 8 and 10 to 12 p. m.

FOR SPACE IN THIS PROGRAM

# TELEPHONE OLIVE 5535

MARC O. WALL, PUBLISHER

# NR TO-NIGHT— Tomorrow Alright Get a 25¢ Box



IN 25¢ BOXES

**Anti-Kamnia**  
(OPPOSED TO PAIN)

FOR HEADACHES, NEURALGIAS, COLDS, WOMENS ACHES & ILLS

**AK**

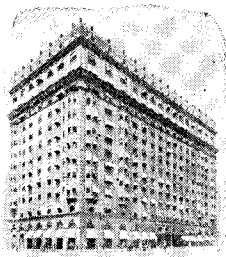
Ask For A-K Tabs

**TABLETS**

PROGRAM—Continued

Hind, a Delegate.....	Thomas Vaiden
Price, a Delegate.....	Conrad Cantzen
MacIntosh, a Delegate.....	Penwood Batkins
White, of the Southern Commission.....	Frank Ginter
Seward .....	John W. Bennett
Jennings, of the Southern Commission.....	William R. Randall
Hawkins, First Clerk.....	Duncan Cherry
Hay .....	Gerald Cornell
Second Clerk .....	Dolph Ryan
Messenger .....	C. N. Van Clief
Salmon Chase .....	John C. Hickey

PROGRAM—Continued



*A first-class prescription drug store in lobby with general supplies of drugs, toilet articles and candies.*

At the

# Hotel Jefferson

Management Lyman T. Hay

## ANNOUNCEMENT

A table d'hote dinner is being served daily from 6 to 8 p. m. at \$1.50 per cover, Sunday \$2. Dancing on Monday and Saturday nights after the theatre. Music by the new Jefferson Jazz Band.

# **Billiken Shoes**



When to the Show  
our Parents go  
They Think we're  
tucked in bed  
But we're so happy  
in Billiken Shoes  
That we're romping  
around instead

## **Billiken Shoes**

MADE ONLY BY

**McElroy Sloan Shoe Co.**  
ST. LOUIS, MO.

AMERICA'S BEST SHOES FOR KIDDIES  
SOLD BY A LEADING RETAILER IN EVERY CITY

Who is

*Nancy Lee*

?

PROGRAM (Continued)

Montgomery Blair .....	Albert Hickey
Simon Cameron .....	Herbert Curtis
Caleb Smith .....	Joseph Reed
Burnett Hook .....	William Corbett
Gideon Wells.....	Carson Davenport
Mrs. Goliath Blow.....	Priscilla Knowles
Mrs. Otherly .....	Jennie A. Eustace
William Custis.....	Wallace Clinton
Stanton .....	William Brady
General Grant .....	William W. Crimans
Aide to General Grant.....	George Williams
Dennis, an Orderly.....	Perry Corson
Soldier .....	Daniel Clark
William Scott .....	Warren Ashe
General Meade .....	James S. Barrett

PROGRAM—Continued

# LADIES:

*Do You Know That*

## DAVID BELAIS' WHITE GOLD

(Pat. Feb. 20, 1920)

is revolutionizing the jewelry industry of the *world?* It is pure Gold changed to a beautiful Blue White color,

**18 KARAT FINE**

and is guaranteed to stay white

***Always Insist Upon David Belais' White Gold***

**"GIFTS THAT LAST"**

# COMING TO THIS THEATRE NEXT WEEK

Beginning Sunday Night, November 5  
Matinees Wednesday and Saturday



Jiggs and Maggie on the Stage

# BRINGING UP FATHER

*On His Vacation*

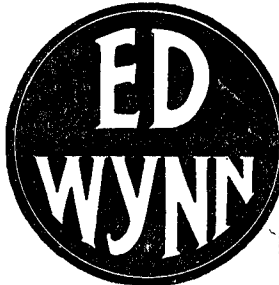
Nights 25c, 50c, \$1.00

Matinees 50c

## Coming SUNDAY, NOVEMBER 12 ONE WEEK ONLY

*After a solid year's success in New York  
and triumphant Chicago engagement*

A. L. ERLANGER in association with B. C. WHITNEY present



**HIS NEW MUSICAL LAUGHING RIOT** 2 ACTS  
19 SCENES  
Book, Music, Lyrics by  
ED WYNN  
Staged by  
JULIAN MITCHELL

*First Time Here*

AUGMENTED  
ORCHESTRA

# COMING TO THIS THEATRE NEXT WEEK

Beginning Sunday Night, November 5  
Matinees Wednesday and Saturday



Jiggs and Maggie on the Stage

# BRINGING UP FATHER

*On His Vacation*

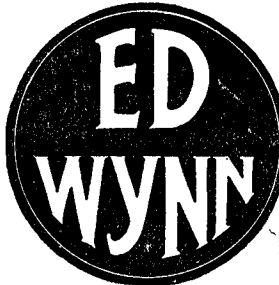
Nights 25c, 50c, \$1.00

Matinees 50c

## Coming SUNDAY, NOVEMBER 12 ONE WEEK ONLY

*After a solid year's success in New York  
and triumphant Chicago engagement*

A. L. ERLANGER in association with B. C. WHITNEY present



**HIS NEW MUSICAL LAUGHING RIOT** 2 ACTS  
19 SCENES  
Book, Music, Lyrics by  
ED WYNN  
Staged by  
JULIAN MITCHELL

*First Time Here*

AUGMENTED  
ORCHESTRA

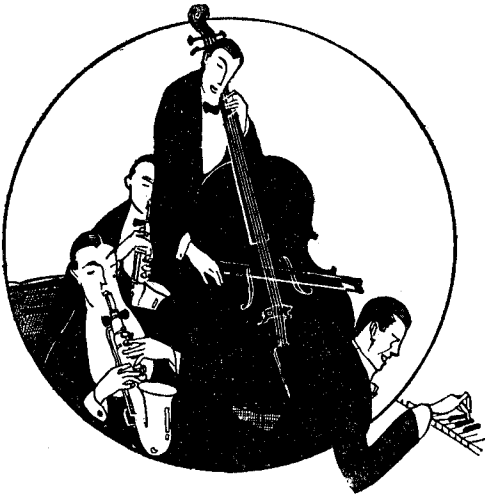
PROGRAM—Continued

General Lee ..... James Durkin  
John Wilkes Booth..... Thomas Spaulding  
Doctor ..... Charles Brill  
Guests at Theatre—Frances Brandt, Camille Gautier, Frances Tumnulty, Alice Pennington, Dorothy Peterson, Charles Lindell, George Howard, Edward Porter.

AUTHOR'S NOTE

In putting a dramatic conception of Abraham Lincoln before his own American people, I may perhaps be allowed to offer one or two observations. Of the merits or lack of them in the play as a drama, it is clearly not for me to speak. But I should like

PROGRAM—Continued



# Teasing Dance Music

It is new—delightfully different from anything you've ever heard. Whether you dance or not, you will enjoy it.

*Every evening, except  
Sunday, from 10:30*

## At the STATLER



# Ed Wynn

## "The Perfect Fool"

Coming in New Musicale

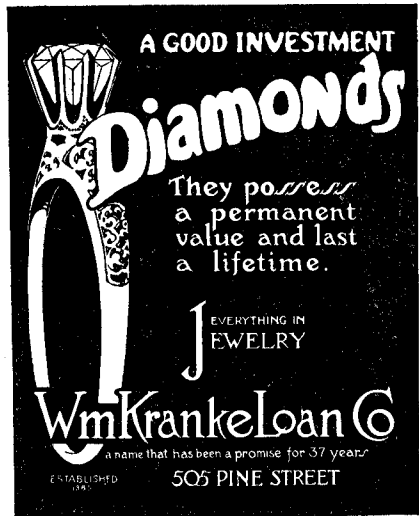
Those of the good o'd general public who feel their existence on this terrestrial sphere is too devoid of hilarity can take heart, for it is announced that A. L. Erlanger in association with B. C. Whitney will present Ed Wynn, "The Perfect Fool," in a new musical delight at the American Theatre, Sunday, November 12th, for a limited engagement.

The new production will be distinctively Ed Wynn from beginning to end, for the star not only wrote the lyrics and music, but he also thought up the jokes, picked out the performers, and arranged the order of the scenes, of which there will be nineteen, divided into two acts.

And then, by way of fair measure, Wynn himself will contribute a lot of new stunts entirely different from those he has done in the past and, in addition, for the first time in his histrionic career he will sing and exhibit his skill as an acrobatic dancer. This latter stunt, incidentally, is a side line which the comedian long has been holding out, for it is a talent that very few of his intimate friends even have suspected he possessed. Wynn did not paint the scenery exactly; but he did tell the artists just what he wanted and he turned over the direction of the dance numbers to Julian Mitchell. Antonio Bafunno will again wield the baton for "The Perfect Fool," and an augmented orchestra.

Besides Ed Wynn, the principals include Janet Velie, Flo Newton, True Rice, Johnny Dale, Jay Velie, Cass Burt and "That Girl" Quartette, which comprises Harriette Keyes, Loretta Ferrati, Ivey Kirkwood and Jeanette Fielding. The Meyakos—clever Japanese trio—seen here with the Ed Wynn "Carnival," are introduced effectively in new surprises, and the principal dancers will be Estelle Penning and Anita Furman, with Belle Gannon, Marjorie Grant, Edna Hamel, Peggy Ellis, Florence Brooks, Marion King, Rose Adaire, Grace Russell, Katherine Annis, and Wynn's Wynn-some, Wynn-ing ensemble of charm and distinction, including the "Sixteen Dancing Daisies" of American beauties.

The usual matinees are scheduled.



A GOOD INVESTMENT

# Diamonds

They possess a permanent value and last a lifetime.

EVERYTHING IN JEWELRY

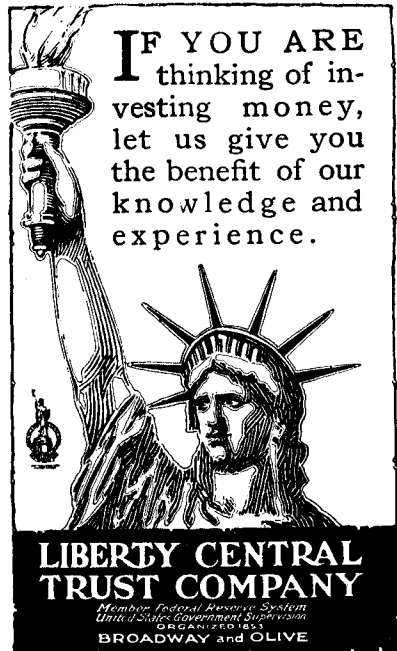
## Wm. Krankel Loan Co.

a name that has been a promise for 37 years.

ESTABLISHED 1884

505 PINE STREET

For Advertising Space  
Call Olive 5535



IF YOU ARE thinking of investing money, let us give you the benefit of our knowledge and experience.

## LIBERTY CENTRAL TRUST COMPANY

Member Federal Reserve System  
United States Government Supervision  
ORGANIZED IN N.Y.  
BROADWAY and OLIVE

PROGRAM—Continued

it to be remembered that it is not the dramatist's business to compete either with the historian or the biographer. The story of the American Civil War and of Lincoln's personal career have been told exhaustively and exactly. My purpose has been to select from these in such a way as to give, it may be heightened significance to a certain strain in Lincoln's character and to ascertain movements and tendencies in the human mind that he led and directed. I have not attempted to state everything, but to state something with imaginative lucidity. So that for this artistic purpose (and by the example of the greatest dramatists), I have adapted the events of history to my needs; feeling justified in shaping literal fact to the service of essential truth as I saw it, or in the invention of a fictitious character, such as Burnett Hook.

PROGRAM—Continued

SCENE-SHIFTING

Scene-shifting isn't accomplished any more swiftly and smoothly than we can move your household goods for you. The General Warehousing Company, Delmar at Euclid, owning and operating the American Storage and Moving Company, J. Brown Storage Company, Langan and Taylor Storage and Moving Company, R. U. Leonori Auction and Storage Company.



# CONROY'S

The largest institution  
in America merchandising  
Pianos of all types  
—exclusively—

Prices \$395 ~ \$3500

1100 Olive

*Who*  
*is*  
*Nancy Lee*  
*?*

PROGRAM—Continued

Precise records are preserved in many volumes; my hope has been to add a little to the spiritual interpretation of these.

In the same way, it is clear to me that a writer does most honor to his subject in writing as well as he can of it. And he can only write as well as he can by using an idiom to which he has been bred. In the very few instances, therefore, where a phrase in the play falls unfamiliarly to American ears, I should like to suggest that it is not charged against Shakespeare, for example, that he did not write Caesar in Roman speech. In the present instance, however, the differences are so trifling that they are hardly likely to be noticed. For the rest, I can but wish that the play might serve, beyond its chief function of interesting an audience in a theatre, to help American people to realize the fundamental meaning that their greatest figure has to an English mind.

PROGRAM—Continued

## After Theatre Service

at

# Mother Goose Shop

Lunches

Candies

Sodas



**We Call  
Everywhere**

—Specials—

—**Pressing**—

Suits called for and delivered  
the same day

—**Tailoring**—

We reline coats and do repair  
work of quality

*For Advertising  
Space in this  
Program  
Call Olive 5535*

PROGRAM—Continued

SYNOPSIS

- Scene 1—Lincoln's Home at Springfield, 1860. (Intermission two minutes).
- Scene 2—Seward's Room in the White House, Washington. A year later. (Intermission four minutes.)
- Scene 3—Another Room in the White House. Two years later.
- Scene 4—The Cabinet Room in the White House. About the same date. (Intermission four minutes.)
- Scene 5—General Grant's Headquarters near Appomattox, April, 1865. (This scene is in two episodes, allowing for the lapse of several hours.)
- Scene 6—A small lounge back of the boxes in Ford's Theater. The evening of April 14, 1865.

---

Authorized book of the play on sale in the lobby.

---

For Mr. Harris.

Company Manager .....S. C. Freefield  
Business Manager .....John L. Peltret

*Who is*  
*Nancy Lee*  
*?*

# Announcement

Never before in local theatrical history have theatre-goers been assured as many high-class attractions as are booked for the 1922-1923 season at the American Theatre. These include offerings sponsored by the foremost theatrical managers of the United States.

HAVE YOU MADE YOUR SEASON RESERVATION?

## Coming to the American

Nov. 5—Irene Bordoni in "The French Doll."

Nov. 12—Ed Wynn in "The Perfect Fool."

Nov. 19—"Lightnin'."

### AND LATER—

Ziegfeld Follies.

Fred Stone in "Tip Top."

"Good Morning, Dearie."

"Dulcy."

George White's "Scandals of 1922."

Irving Berlin's Music Box Revue.

David Belasco's "The Gold Diggers."

"The First Year."

"Thank U."

"Little Nellie Kelly."

Marilynn Miller and Leon Errol in "Sally."

Doris Keane in "The Czarina."

"Captain Applejack."

Francine Larrimore in "Nice People."

Frances Starr in "Shore Leave."

Otis Skinner in "Mister Antonio."

Robert B. Mantell

William Gillette

Thurston

"Six-Cylinder Love."

## When in New York

see

A. L. ERLANGER'S  
MUSICAL PRODUCTION

# THE YANKEE PRINCESS

Adapted from Emmerich Kalman's  
European Success "DIE BAJADERE"

**KNICKERBOCKER**

B'way & 38th St.  
Eves. at 8:20 Mat.  
Wed. & Sat. 2:20

"A real blueblood among shows."—Tribune.

"The Yankee Princess' dazzles."—Times.

"The best of music plays—Mail.

"Holds sway with haunting melodies."—Globe.

"Has everything necessary to complete success."—Herald.

"A constant delight."—News.

"Delightful melodies sung by real artists."—Post.

"An effective combination of the witty and the languorous in music."—Sun.

"A real musical treat."—Telegram.

"If you haven't forgotten the taste of good music go to the Knickerbocker and sample it."—American.

Music

# The ORIENT

CHINESE AND AMERICAN RESTAURANT.  
419 NORTH SIXTH STREET

St. Louis' foremost Restaurant in the attractiveness of its congenial environment and refined, home-like atmosphere the tasteful simplicity of its appointments and the high standard attained in Chinese and American cuisine.

OPEN 11 A. M. to 2 A. M.

Innovation Luncheons, Afternoon Teas in Private Dining Room. A day's notice is required for private parties.

BILL OF FARE, A LA CARTE

St. Louis' most fashionable after theatre rendezvous for delicious suppers and fountain refreshments

*Ibsens*

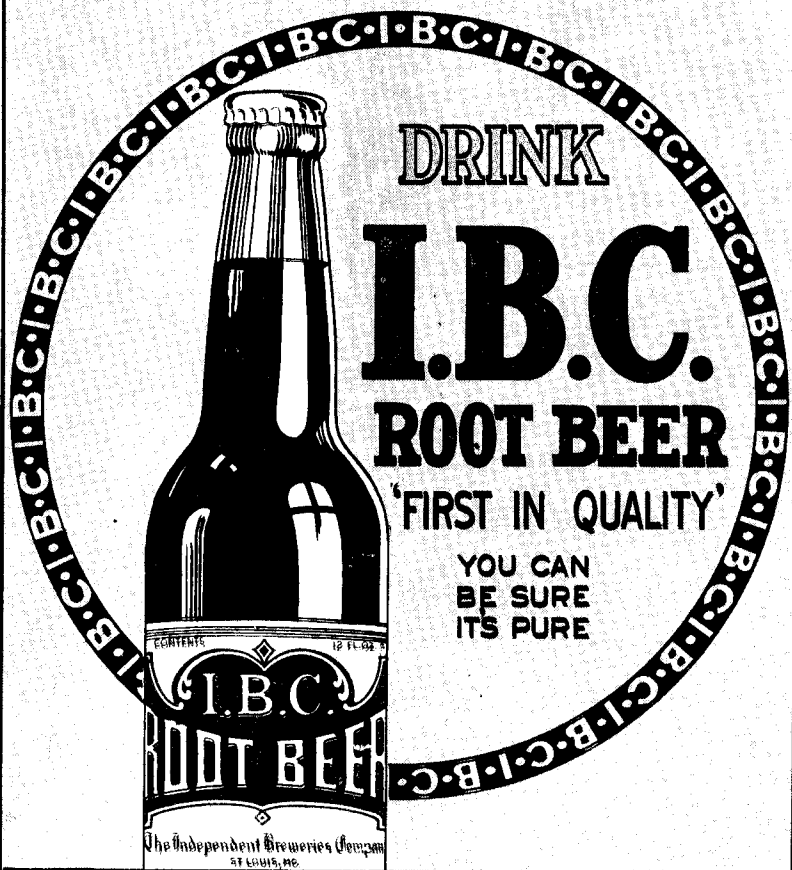


Tea Room  
Candies

Favored by  
the Elite

910-912 Olive St.





DRINK

**I.B.C.**  
**ROOT BEER**

'FIRST IN QUALITY'

YOU CAN  
BE SURE  
ITS PURE

**The Independent Breweries Company**

SIDNEY 4300  
VICTOR 3212

# SHUBERT BELASCO THEATRE

DIRECTION  
MESSRS. LEE and J. J. SHUBERT

**J. M. Gidding & Co.**  
Fifth Avenue New York

1510 H. STREET. N.W. OPPOSITE SHOREHAM HOTEL

## *Gidding Prices—*

**O**UR collection of Outer Apparel,  
Furs, Millinery, and Accessories  
for the Autumn and Winter Season of  
1922 *are much lower in price than they  
have been for many years, while the  
Quality, as in the past, is Supreme.*



# IN THE BUSINESS WORLD OF WASHINGTON

**M** cDEVITT 1003 9th St. N. W.  
 If the Living Room —needs refurbishing see our "special" in 3-pc. OVERSTUFFED SUITES, velour or tapestry, at.. **\$125**

Phone Main 8211

All Portrait work at half price during month of November

**Washington Portrait Studio**  
**ANTHONY LEO, Artist**  
 18 Years Experience  
 Sunday by Appointment  
 Picture Frames and Glasses at Wholesale Price  
 Phone Main 6705 739 7th Street N. W.

## J. LEO KOLB

Wants Your Insurance  
 923 New York Ave. N. W.  
 Main 5027.

**E**MBLEMS, CHARMS, RINGS OF ALL ORDERS.  
 D. ALPHER, Jeweler  
 907 G St. N.W.

### FOR SALE

A very attractive business property, located in the busiest commercial zone in Washington, built of brick, store, restaurant and flat, hwh. gas and electricity. **Price only \$22,500.**

**A. N. WILDMAN & CO.**  
 Ninth and H Sts. N.W.  
 Phone Franklin 6406 or 8187

Suburban Specialists  
**MORGAN E. MORGAN & CO.**  
 Real Estate  
 1407 New York Ave., Phone Frank. 1320

## GEORGE F. SCHIMMEL

TEACHER OF SINGING  
 (Recommended by Oscar Saenger)

Studio 1711 I Street N. W.  
 Franklin 1615 10 to 11 a. m., 5 to 7 p. m.

## PHILIP T. HALL INC.

Shirt Maker and Haberdasher  
 1411 F St. N.W.

## WE CAN SELL YOUR PROPERTY IN—7—DAYS SECURITY REALTY CO.

1009 7th St. N. W. M. 7646

### ASK FOR

**STORM & SHERWOOD'S**  
 Perfectly Pasteurized  
 MILK, CREAM AND BUTTERMILK  
 Furnished by  
**LEWINSVILLE FARM DAIRY,**  
 3247 Q St. N.W., Phone West 264.  
 —BRANCHES—  
 2005 14th St. N.W., Phone North 2217  
 2000 Seventh St. N.W., Phone North 3138  
 Deliveries to All Parts of the City.

### TRY

## GAPEN INN

New Management New Prices  
 Transients, Home Cooking  
 1812 H STREET

## H. LE ROY LEWIS

Concert Baritone and Teacher  
 of Voice and Lyric Diction

Studio: 1406 H St. N. W. Main 7506

# CLOTHES ON CREDIT

For Men, Women and Children

**H. ABRAMSOM**  
 Cor. 7th and L Streets N. W.  
 Phone Main 4913

PLEASING  
PORTRAITS

*Billandy*

Quality  
Supreme Photography

AND MOST MODERATE PRICES  
Distinguish Our Studio

"CHRISTMAS SPECIAL" SITTINGS NOW

Studio: 719 Ninth St. N. W.

Two doors above the Rialto

## SHUBERT-BELASCO THEATRE

The Home of Shubert Vaudeville

DIRECTION, LEE & J. J. SHUBERT

Louis J. Fosse, General Representative Shubert  
Washington Theatres

WEEK OF NOVEMBER 12, 1922  
Matinees Daily 2.15 Evenings 8.15

SPECIAL ENGAGEMENT

The Popular Versatile Comedian and Producer of  
New Ideas

**HERMAN TIMBERG**

(Himself)

Presents The Laughing Creation of the Year

**"FROLICS OF 1922"**

With a Flock of Joyous Gloom Destroyers

And a Bevy of Bona-fide Beauties

Direction of Affiliated Theatres, Inc.

(Program Continued on Page 5)

Pianos furnished by Arthur Jordan Piano Co.



SALES—RENTS  
LOANS  
INSURANCE

### WHY WAIT

until your car is demolished before  
you insure it. We write all forms of  
Automobile Insurance, including fire,  
theft and liability.

**CONTINENTAL REALTY CO.**

308 Bond Building 14th and N. Y. Ave.  
PHONE MAIN 4119 FOR "SUPER SERVICE"

# SHUBERT-BELASCO THEATRE

Week Beginning Sunday, November 12th

MATINEE DAILY 2:15      EVENINGS 8:15

Direction of Messrs. Lee and J. J. Shubert  
SHUBERT-BELASCO THEATRE

### Business Staff

IRA J. LA MOTTE.....RES. MANAGER  
Mr. Youngs.....Treasurer  
Mr. Thomas.....Asst. Treasurer  
Mr. Hosmer.....Second Asst. Treasurer  
Mr. Kelly.....Press Representative  
Mr. McCormick.....Advertising  
Mr. Van Tassel.....Supt. and Main Floor  
Mr. Patton.....Balcony Door  
Mrs. Cooke.....Head Usher

### The Stage

Jas. Hurley.....Manager  
Mr. Bernard.....Master Electrician  
Mr. Gibson.....Master Property Man

### Music

Paul Schwarz.....Orchestra Leader

### Suggestions to Patrons

Phone Main 59

The Box Office will be open from 9 A. M. to 10 P. M.

This theatre, under normal conditions, with every seat occupied, can be emptied in less than three minutes. Look around now, choose the nearest exit to your seat, and in case of disturbance of any kind, to avoid the dangers of panic, walk (do not run) to that exit.

Emergency Exit Designated by Red Light.  
Matinees 2:15.

Doors will be open at 7:30 P. M. for evening and 1:30 P. M. for afternoon performances.

The telephone in the Box Office is Main 59. Seats ordered over the telephone will be held as long as the demand for seats will permit.

The men's room is left of the main entrance, downstairs.

The women's room is on the right.

For the convenience of patrons, a coat and checking room is maintained, wherein all garments and property may be checked. No charge. The check room is located in the lobby.

Persons who find lost articles are requested to deposit them at the Box Office or with the Superintendent, where they may be recovered by their owners.

Suggestions that may add to the comfort or convenience of the patrons of this theatre earnestly solicited.

Attaches must extend patrons every possible courtesy.

The ushers will be pleased to call a taxicab for every class of service.

## "Eight-Twenty"

### We Want You to Remember Us—

When you have friends in town—  
When your club wishes to hold a  
Smoker—

When you have a wedding anniversary to observe—

When you have a deal to put over—  
When you are tired of eating usual food—

When your card party is too large  
for your own parlor—

Give us all the time you can—it isn't always necessary but it makes it easier for us and better for you.

REMEMBER, this is not 17th Street; it is Connecticut Avenue, and the number is

### "EIGHT-TWENTY"

Phone, Franklin 6222

# Auth's Frankfurters

Plump—Juicy—Delicious!

Only the finest ingredients, generously apportioned and given that rare flavoring that results from the AUTH secret process of spicing

MADE IN  
WASHINGTON  
BY



N. AUTH  
PROVISION  
CO.

The Circle of Goodness

Tonight! Visit  
**Le Paradis**  
 Washington's Smartest Restaurant

NO. 1—THOMAS CIRCLE  
 LUNCHEON

Dancing at Tea, Dinner and Supper—Couvert charge \$1 at supper only

Meyer Davis' Le Paradis Band



**PROGRAM**

Overture ..... Belasco Orchestra

Paul J. Schwarz, Musical Director

**HERMAN TIMBERG**

And His

**"FROLICS OF 1922"**

In

SOMETHING ENTIRELY DIFFERENT

Words, Book and Music by HERMAN TIMBERG

Additional Music by Sammy Timberg

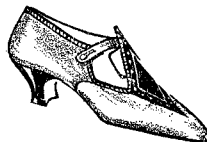
Staged by the Author

(Program Continued on Page 7)

Gelfand's Quality Products  
 Are Blue Ribbon Prize Winners.

Pianos furnished by Arthur Jordan Piano Co.

Furniture furnished by Maxwell Furniture Co.



This is  
 Paris!

*satin with  
 brocade trim  
 — also in  
 black suede  
 patent trim*

**"HOUSE OF NOVELTIES"**

Party Favors, Costumes,  
 Noisemakers, Toys, Games, Car-  
 nival Goods, Dolls, Etc.



**W. B. GARRISON, Inc., Importers and Jobbers**  
 416 10th Street N. W. Phone Main 8055

The City Club Shop of

**Hahn**  
 SHOES  
 1318  
 G-St.

**That Good Upholstering**

Also Chair Caning  
 Phone for Samples  
 Free Estimates



**ARMSTRONG'S**  
 1233 10th St. N. W.

Franklin 7483

**STAPLES INN**

1704 Conn. Ave. N. W.

Breakfast — Lunch — Tea — Dinner

OPEN SUNDAYS

Home Cooked Dinner, 75c

"A Good Thing Is Better for Doing It Sooner"

# THE CHINA RESTAURANT

606 13th St. N. W.  
Between F and G

Most Popular Chinese and  
American Cafe in Washington

*Special Attention to  
After-Theatre Parties*

## AMERICAN SERVICE

Regular Lunch from 11 A. M. to 2 P. M.

Regular Dinner from 5 to 8 P. M.

Special Sunday Dinner from 11.30  
A. M. to 8 P. M.



**F**REQUENT this  
store on your shop-  
ping tours and you'll  
more readily appreciate  
our slogan "If it is made  
of paper you can get it  
at Andrews".

R.P.  
**Andrew's PAPER**  
COMPANY

727-731 Thirteenth Street N. W.

**STANDARD**  
Engraving Co. Inc.  
1212 G STREET N. W.  
DESIGNS, COLOR PLATES  
HALF-TONES, LINE CUTS  
PHONE FRANKLIN 1709-1710  
**IDEAS · IN · ADVERTIS-  
ING · AT · YOUR  
· · · SERVICE · · ·**

DO YOU KNOW THAT

## Julius Lansburgh

is now at 1756 M Street with  
the Lansburgh Decorating Co.  
Special prices will be made on  
Decorations for the Home  
including Window Shades

Licensed by District of Columbia

## Mme. Harrison-Astor PSYCHIC PALMIST

Satisfaction Guaranteed

I do hereby solemnly swear to make  
no charge if I do not faithfully fulfill  
every word embodied in this state-  
ment. I will tell you just what you  
want to know about your friends. I  
further guarantee and promise to  
make you no charge unless you find  
me superior to any other palmist you  
ever consulted. There is no hope so  
fond or wish so great that I cannot  
accomplish for you.

I do guarantee to tell it all before  
you utter a word to me, and after I  
am finished and you are not absolutely  
satisfied and if I do not faithfully ful-  
fill every word and claim above, then  
you pay not a penny, and I do here-  
with sign my name to this statement.  
**MADAME HARRISON-ASTOR.**

No fortune telling. My work is  
mentalism. All business confidential.  
Can be seen from 1 p. m. till 8 p. m.,  
excepting Sundays.

**326 Twelfth Street, N. W.**

SECOND FLOOR—across from Mt. Ver-  
non Trolley Station. Readings One Dollar

Perfect Konkave Rubber Keys—Main 3753

# "Say it with Flowers"

## GEORGE C. SHAFFER

900 14th Street N. W.

Phones Main 2416-2417-2418

Franklin 2362

The Largest Variety of Cut Flowers in Washington

Associated through Florists' Telegraph Delivery Service with Leading Florists Everywhere

Flowers by Telegraph

Floral Decorations of All Kinds

### PROLOGUE

Theatrical Manager.....	Ray King
The Critic.....	Dedette Tremayne
The Theatregoing Man.....	Eddie Heffernan
The Hall Room Girl.....	Audrey McVey
An Actor from the West.....	Sammy Timberg
A Tailor.....	Al Smith

(Program Continued on Page 9)

FOR YOUR NEXT SALAD  
Try Gelfand's Mayonnaise

Pianos furnished by Arthur Jordan Piano Co.  
Furniture Furnished by Maxwell Furniture Co.

SEE SHILL when in foot trouble

## Insurance of the Questionable Kind

Should be avoided.  
Our facilities afford  
prompt indemnity of  
the least possible in-  
convenience to the  
claimant.

### John P. Collins Co.

INSURORS

806 17th Street N. W.

Main 5629

*'Insure and Be Sure'*

# Main Frazee-Potomac Laundry

## 822

### Immaculate Work

## Calls

### Dry Cleaning - Pressing - Dyeing



"The Monkey Gland" of the Typewriter.

COURSE DINNER, \$1.25--LUNCH, 75c.

PHONE FRANKLIN 4178

AFTER THE SHOW VISIT

# *Gallotti's*

ITALIAN-AMERICAN

## RESTAURANT

(Opposite Raleigh Hotel)

C. GALLOTTI, Manager

404 12th STREET N. W.

WASHINGTON, D. C.

## Sterling Hotel

13th and E Sts. N.W. Washington, D. C.

The Sterling Hotel is a Modern, Up-to-Date  
Hotel in Every Respect

### European Plan

Rates, \$1.50 and up

Special Weekly Rates to the Theatrical  
Profession

EXTRA! Special Fried Chicken Dinner, \$1.00  
J. T. HEARE, Manager

## Carlton Riding School

The Utmost in Riding

2130 P St. N. W. Phone North 1894

CHINESE-AMERICAN DISHES OF EXCELLENCE

1412  
New York  
Avenue



DER D00, Prop.

Telephone  
Franklin  
7249

After-Theatre Parties Given Special Attention—One Block From This Theatre

## Mme. BERTHIER

French Dressmaker from Paris

*High-Class Work*

Phone N 3588 1824 15th Street N. W.

## Leroy H. Thayer

School of Dancing

FORMERLY

HOTEL GORDON BALLROOM

Ballroom and Stage Dancing

Now at 1145 CONN. AVE., N. W.  
Phone Main 2573

Winter Is Coming!

## FRENCH FUR SHOP

Furs remodeled into latest styles  
Stoles and Chokers for sale reasonable

726 13th St. N. W. Main 1706

## Vacuum Cleaners FOR RENT

By the Day, Week or Month  
All Standard Makes

GEO. F. MILLER  
ELECTRIC CO.

903 NEW YORK AVENUE

Phone Main 2757

Perfect Konkave Rubber Keys—Main 3753.

**THE HADLEIGH**

16th and V N. W.  
North 4019

1416-18 Park Rd. N. W.  
Columbia 927

**MYRTLE PRICE**

"Long May She Wave"

**BEAUTY SHOP**

Open 9:15 A. M. to 8:30 P. M.  
Every Attention to the Lady



**THE GIRLS**

The Novelty Girl.....	Rose Shelby
The Unit Girl.....	Lorraine Hansen
George White.....	Irene Hayden
Bessie McCoy Davis.....	Ora Lightner
Sophie Tucker.....	Peggy Mitchell
Ann Pennington.....	Vivian Birmingham
Pat Rooney.....	Anita Garvin
Fannie Brice.....	Jessie Robinson
Eddie Cantor.....	Virginia O'Sullivan
Eddie Leonard.....	Dedette Tremayne
Irene Bordoni.....	Florence Mouclair
Lillian Lorraine.....	Rena Manning
Gallagher and Shean.....	Katherine Rahn and Audrey McVey
Marilyn Miller.....	Gladys Burns
Ethel Barrymore.....	Mae Manning
Stage Manager.....	Eddie Heffernan

(Program Continued on Page 11)

Gelfand's Quality Products  
Are Blue Ribbon Prize Winners.  
Pianos furnished by Arthur Jordan Piano Co.  
Furniture Furnished by Maxwell Furniture Co.

**RELAXATION**  
and the satisfaction  
of dining well — is  
found here always

Luncheon -- 65c  
12 until 2

Dinner -- 71c  
5 until 8

• A LA CARTE SERVICE •

**FIRESIDE INN**  
1214 Connecticut Avenue  
• PETER C. SORESEN •

**SEE SHILL** when in foot trouble

Phone Franklin 3613-W

**The Toy Shop**

Party Favors Made to Order, Greeting Cards

RACHEL J. COFFIN

816 17th STREET N. W.

**RAGTIME**  
Jazz, Popular Music  
Taught on the Piano

In 20 Easy Private Lessons. Adult beginners a specialty. Advanced course for players. Our schools have been established since 1903. Call for demonstration or send for free booklet. **OPEN EVENINGS.**

**CHRISTENSEN SCHOOL OF MUSIC**  
1322 G STREET N.W. Tel. Main 1278

**The Arbor Inn**

732 15th STREET

*Best of food and courteous treatment*

Club Breakfast, 7 to 11 a. m., 25c to 60c  
Club Lunch, 12 to 3 p. m., 40c  
Regular Dinner, 4 to 8 p. m., 65c

*All Pies, Pastries and Bread Baked  
in Our Own Oven*

J. H. BARROW, Manager

"Protection Is Better Than Correction"

# CHEVROLET EXPERT

CARS  
REPAIRED  
BY  
EXPERTS

FRANK S. POHANKA

2110 L STREET N. W.  
WEST 555

CARS  
BOUGHT  
AND SOLD



Our Dandruff Treatment Shows Results After the First Treatment

Marcel Waving, Facial and Scalp Treatments,  
Manicuring, Permanent Waving (Nestle Process)

**LADY JANE'S BEAUTY SHOPPE**  
FORMERLY PERMANENT WAVE SHOP

1206 G Street N. W.—Main 6132—Entrance Rosedere Rotunda

Phone Franklin 7757

## *The Republic*

American—Chinese  
RESTAURANT

910-12 F St. N. W. Washington, D. C.

North 9823

## MORNINGSIDE SHOP

— Hats —  
Gowns — Negligees  
*All the Latest French Models*

1637 Connecticut Ave.

Washington, D. C.

## The Best 'Ads' Are Never Written

Service is the keynote of our  
establishment

## Suits and Overcoats

TO ORDER

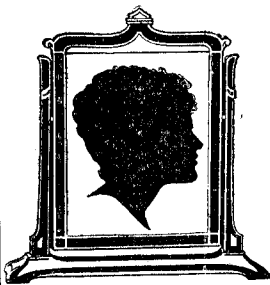
**\$40.00**

## F. K. Heindrich & Co. MERCHANT TAILORS

Full Dress and Tuxedo  
Suits for Hire

Phone Franklin 2966

912 14th Street Northwest



## A Portrait by Bachrach

Size 8 x 10 complete in attractive  
silver or gold easel frame for

**\$10**

The solution of your gift problems. It is not  
too early to arrange for your Christmas photo-  
graphs. Phone Main 5676 for an appointment.

### Bachrach

*Photographs of Distinction* 1327 F STREET N. W.

Perfect Konkave Rubber Keys—Main 3753

The tired business or professional worker will benefit from a course of chiropractic adjustments. For results see—

# DR. DELLA LEDENDECKER

Washington's Foremost Woman Chiropractor

2035 P Street (one block off Dupont Circle)

Phone North 1700

### SECOND ACT

Hattie Sammy

**DARLING and TIMBERG**

IN A HIGH-CLASS VAUDEVILLE OFFERING

### THIRD ACT

**THE ELSE and PAULSEN REVUE**

AN APACHE LOVE AFFAIR

An Apache Lover.....	Harry Paulsen
A Determined Lover.....	Else
Her Sweetheart.....	Ray King
Sailor Boy.....	Eddie Heffernan
An Apache Pianist.....	Sammy Timberg
The Gendarme.....	Nat Nazarro
The Apache's Lover.....	Detette Tremayne

Apaches, Tourists, etc.

SCENE—Somewhere in Northern France.

TIME—Winter.

(Program Continued on Page 13)

Gelfand's DELICIOUS MAYONNAISE

THE HOUSEWIFE'S only competitor.

Pianos furnished by Arthur Jordan Piano Co.

Furniture Furnished by Maxwell Furniture Co.

**SEE SHILL**, formerly with  
Georges & Son, Inc.



## The Studio Shop

1725 L St. N.W.

Tel. M. 7013

DAISY BELLE M<sup>c</sup>COY

### Gifts

Artistic Xmas Cards  
now on sale

Parchment or Voile Lamp  
Shades Made to Order

Day and Night Classes in

Painted Shades

China

Char Coal

Water Colors

Oils

## NEXT ACT—J. R. SIMPSON, JR.

### Life Insurance Specialist

\$10,000 Life Insurance, \$20,000 Accident Insurance

\$100 per month Health and Accident (non-cancellable) Insurance

At age 30, Combination costs only \$135.00

Don't Delay

Phone Main 1427 today

Barrister Building

## Mrs. Anna L. Goodhue

Teaches All Branches of

### SINGING

According to Nature's Laws

Studio, 802 F Street Northwest

All Work  
Guaranteed

New and Second Hand Tires  
and Tubes For Sale

## SCHMIDIE'S TIRE SHOP

VULCANIZING  
TIRE REPAIRING

Auto Accessories—Pen Oil

Rear 712 Twelfth Street Northwest

PHONE FRANKLIN 7378

"A Good Thing Is Better for Doing It Sooner."



## PALMETTO INN

917 16th St. N. W.  
Below K St.

Specializing in famous  
old South Carolina  
recipes

Breakfast - 50c  
Plate Lunches 40c & 60c  
Course Dinner \$1.00

Special Monthly Rates

## FOR ADVERTISING SPACE

IN

The Shubert-Belasco Program  
Poli Theater Program  
Shubert-Garrick Program

CALL

## CLIFTON AIRES

310 International Bldg.  
1319 F Street N. W. Main 4065

%  
**4**

## American Commercial and Savings Bank

Temporary Location, 635 F St. N. W.

Under Supervision U. S. Treasury

Call and Get Acquainted—Make This Your Bank

**EDWARD VOIGT, Jr., President**

On Savings

Future Home, 7th and G Sts. N. W.

**2**  
%

On Checking

## BEAUTIFUL ROSE CREST

New Subdivision between Alexandria and Washington

Fifteen minutes from 12th Street and Pennsylvania Avenue,  
by Electric Cars or a Fine Automobile Road

**Eight Homes Sold—Can Build Yours in 75 Days**

WHY PAY RENT? Make us a cash payment, balance monthly  
Concrete walks, sewers, city water, electric lights  
Machine will call to show property

Graham & Ogden, Realtors

530 KING ST., ALEXANDRIA  
Phone 579 Alexandria

Dinner

5:30

to 9

After the Show until 12:30—  
A bite to Eat—  
Dancing—Peppy Music—  
*LIFE!!*

*Harvey's*

Dancing

9:30

to 12:30

FOURTH ACT  
HERMAN TIMBERG  
IN "LITTLE BITS"

FIFTH ACT  
NAT NAZARRO and COMPANY  
With BUCK & BUBBLES in "TREAT 'EM ROUGH"

INTERMISSION  
"Southland" ..... Layton

(Program Continued on Page 15)

The world is looking to Washington for progress and  
the public is looking to Gelfands for  
MAYONNAISE.

Pianos furnished by Arthur Jordan Piano Co.  
Furniture Furnished by Maxwell Furniture Co.

SEE SHILL, the foot relief wizard

Put your engine troubles

OUT OF BUSINESS

TODAY

MIRACLE OIL

Will do it

Call

Mr. P. J. Magee

Franklin 7817

Room 417

Southern Building



## McLachlen Banking Corporation

Under Government Supervision

Tenth and G Streets

Southwest Branch, 1350 B Street S. W., Corner Linwood Place

3% ON SAVINGS  
DEPOSIT

4% ON TIME  
CERTIFICATES  
OF DEPOSIT

"The Monkey Gland" of the Typewriter

EXCLUSIF ORIGINAL

*In every city the truly  
exclusive shop is to be found in  
a convenient, not conspicuous location  
Here is a delightfully interesting  
shop in the heart of the retail  
district yet instantly remote  
from the din of traffic and the  
gaze of idle crowds.*

**MIGNON HAT SHOPPE**  
FIFTH FLOOR  
AMERICAN NATIONAL BANK  
BUILDING

1315 F STREET N.W.

MRS. LEE WELLS TALBOT FRANKLIN 8667  
MRS. KATHRYN FIELDS TELEPHONE APPOINTMENTS



## Mme. Naomi

World's Greatest

**Palmist and Clairvoyant**

Guarantees to read your entire life, past, present and future; gives true advice on business, love and health and family affairs; tells the name of your future husband or wife, and what to do to be a success in life; tells you what business is most lucky for you and what part of the world will be more successful for you; advises how to gain and hold a good position; she tells if the one you love is true or false, and causes speedy marriage with the one of your choice; brings the separated together; makes happiness between man and wife; she tells you the secrets of being happy and successful in anything you take in hand; her advice will remove all obstacles and evil influence. One visit to the Madam will repay you for disappointments in all others; satisfaction guaranteed or no charge.

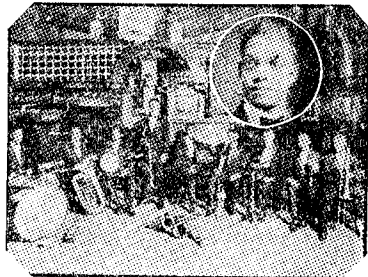
SPECIAL READINGS, 50c.

1211 E STREET NORTHWEST

Opposite Sterling Hotel

## Sterling Conaway's Novelty Orchestra

WASHINGTON, D. C. and NEW YORK



Ph. N. 5607 1307 Riggs St. N. W.  
Washington, D. C.

Just in this city after many years in New York and are open for any engagement.

Dances, Balls, Tea Parties, Cabarets, Dining Rooms  
Grill Rooms

Perfect Konkave Rubber Keys—Main 3753

Special Attention Given to Ladies Without Escort  
OPEN AFTER THEATRE

# Occidental Restaurant

Try our Oysters, Lobsters, Rarebits, Mexican Chili Con Carni,  
American Chop Suey, Italiene Spaghetti Tetrizini,  
Fancy Salads and Sandwiches

AT POPULAR PRICES

*See Gus*

Order Selected Theatre Tickets at our News stand—Telephone Main 6467

## THE UNIT

SCENE 1—A Room in Tin Pan Alley  
Two Song-writers.....Herman and Sammy Timberg  
Song Title....."Love Is a Game of Cards"

SCENE 2  
Just a Song.....Hattie Darling  
SCENE 3—An Artist's Dream  
Song—"Painting a Picture of You"

Ray King and Models  
SCENE 4—The Medal Scene  
Song—"I Want to Pin a Medal on You"  
Eddie Heffernan and Hattie Darling

(Program Continued on Page 17)

Gelfand's Quality Products  
Are Blue Ribbon Prize Winners.  
Pianos furnished by Arthur Jordan Piano Co.  
Furniture Furnished by Maxwell Furniture Co.

DR. SHILL, Foot Specialist, Main 3223

*The Friendly Shop*

## Breslau

1309 G STREET N. W.

SUITS, DRESSES,  
WRAPS and  
MILLINERY

Featuring  
Original Models  
at Prices that have  
made this

*The Most Talked About  
Shop In Town*

Phone North 1132

Jack Heros, Manager

## Dupont Delicatessen Shop

Home Cooked Meats, All Kinds of Salads

Try Our Ice Cream and Soda

2016 P Street Northwest

Washington, D. C.





**100,000 More Customers**

The papers represented on this page are read by approximately one hundred thousand interested readers—living in the small town and communities close to Washington. Their circulation is intensely local and entirely home delivered. Are you getting your share of the purchasing power of the urban and rural communities.

**CLIFTON AIRES**  
**PUBLISHER'S REPRESENTATIVE**  
**INTERNATIONAL BUILDING**  
**MAIN 4065** **1319 F STREET N. W.**

London, 25 Old Bond St.  
 Paris, 255 Rue St. Honore  
 New York, 681 Fifth Ave.

1147 Connecticut Avenue - Washington, D. C.  
 Telephone Franklin 4334

cordially invites you to visit her salon where loveliness is attained by means of the splendid Muscle Strapping Skin Toning Treatments and the Venetian Preparations

# ELIZABETH ARDEN

SEE SHILL, the foot relief wizard

Pianos furnished by Arthur Jordan Piano Co.  
 Furniture furnished by Maxwell Furniture Co.

THE WORLD IS LOOKING TO WASHINGTON FOR PROGRESS AND THE PUBLIC IS LOOKING TO GELFANDS FOR MAYONNAISE.

(Program Continued on Page 19)

By the Entire Company

SCENE 8—The Cakewalk Ball

Principal Joy.....Herman Timberg and Jody  
 An Unwilling Gloom.....Eddie Heffernan  
 Principal Gloom.....Ray King and Grooms

SCENE 7—Joys and Grooms

A Guest.....Ray King  
 The Coat Room Boy.....Herman Timberg

SCENE 6—A Coat Room in Any Hotel

and Other Patrons

Treasurer.....Sammy Timberg  
 A Patron.....Eddie Heffernan  
 His Wife.....Audrey McVey

SCENE 5—A Theatre Box Office

12th and G Sts., N. W.

"Washington's  
 Largest Restaurant"

# WALLIS

LEVER lines insure an act vigorous and special steak, hot mince, and pumpkin pie are some of the clever lines popularizing the bill-of-fare here now.



N. Y. office, 505 Fifth Ave. Paris office, 23 Rue de la Paix

We have no other Washington Office

Hair Henna and Skin Specialist

Entrance next Peter Paul Inn Telephone Main 6956

1106 Connecticut Avenue

*Opilucistis*

Helen Garner, Ethel Rommel, Ethel Vought

No. 1 Thomas Circle, New Bldg.

Franklin 719

HAIRDRESSING  
 Marcelline, Manicuring,  
 Etc.

*The Sorbonne  
 Hairdressing Shoppe*



DRUGS

PRESCRIPTIONS

SODA

# The Southern Pharmacy

Southern Building

15th and H Streets N. W.

Washington, D. C.

Your Phone Order Will Be Promptly Delivered

Imported and Domestic Perfumes

Phone Franklin 2012

## RIZPAH ELDON

The World's Noted Medium and Palmist. She stands alone in her profession. As a Scientific Palmist she is accurate. As a medium she gives names and descriptions of spirit friends, messages and information on all affairs of life, family affairs, business deals, mining and inventions

Office Hours: 10 A. M. to 8 P. M.

512 F Street, N. W. Corner 6th and F  
Second Floor

### You Can Have All The Dresses You Need!

Think of having pretty frocks for every occasion! You can if you take my dressmaking course.

Only a few weeks is necessary. Phone Main 3683 for appointment or full details.

### MISS ANNA HARRIS

723 11th Street N. W.

Visitors are Welcome at

## Bellevue Farms Restaurants



PRODUCT FROM FARM TO YOU

Club Breakfast... 35c  
Plate Luncheon... 45c  
Dinners ..... 60c

### Dining and Lunch Rooms

1332-34-36 G Street N. W.

Open Week Days and Sundays  
till 9:00 P. M.

1338 New York Avenue N. W.

Open Nights to 1 A. M.

We make our own Pastries and  
Ice Cream

# CORD WOOD for SALE

Well Seasoned---Cut Any Length

Delivered Free **\$15.00** Per Cord

## R. P. LEIZEAR

5903 Georgia Avenue N. W.  
Phone Columbia 6244



**The Washington**  
Washington D C

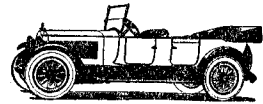
After the Theatre

go to

# The Washington

PENNSYLVANIA AVENUE OPPOSITE THE TREASURY

## After the Show A Drive Thru the Parks



*Packards*

**Main 789**

Attractive Rates

### Vermont Auto Livery

"Washington's Finest Service"

USE OUR

### Checker Cabs

**Main 430**

Meters that Print a Receipt

### MUSICAL NUMBERS—ACT I

"I Am the Novelty Girl".....	Rose Shelby
George White Imitation.....	Irene Hayden
Bessie McCoy Davis Imitation.....	Ora Lightner
Sophie Tucker Imitation.....	Peggy Mitchell
Ann Pennington Imitation.....	Vivian Birmingham
Pat Rooney Imitation.....	Anita Garvin
Fannie Brice Imitation.....	Jessie Robinson
Eddie Cantor Imitation.....	Virginia O'Sullivan
Eddie Leonard Imitation.....	Dedette Tremayne
Lillian Lorraine Imitation.....	Rena Manning
Gallagher and Shean Imitation	

**Katherine Rahn and Audrey McVey**

Marilyn Miller Imitation.....	Gladys Burns
"I Am the Dance Director".....	Eddie Heffernan

(Program Continued on Page 21)

### FOR YOUR NEXT SALAD

Try Gelfand's Mayonnaise

Pianos furnished by Arthur Jordan Piano Co.

Furniture Furnished by Maxwell Furniture Co.

**DR. SHILL,** Chiroprapist, over  
Columbia Theatre

## Ontario Garage 17th St. and Kalorama Road

As the AUTHORIZED SERVICE STATION of Washington for  
SIMONIZ, we advise every car owner to have car

Phone Columbia 8727

**SIMONIZED for Winter Service**

Telephone Franklin 2979

## Norwood & Company TAILORS

1110 New York Avenue N. W.  
Washington, D. C.

## The Federation Tea House

is just the place for a quiet  
talk over a cup of tea and for  
women's clubs to meet over  
the lunch table. Special  
prices can be arranged for  
parties of twenty, forty,  
and over.

**Main 961**

**1734 N Street N. W.**

AFTER THE THEATRE

THE  
*Avenue Nut Shop*

1710 PENN. AVE.

Phones: Franklin 1711—Franklin 7436

Mgrs. Androus and Sakelson

THE  
*Mt. Pleasant Nut Shop*

3022 14th STREET

Phone Col. 7780-J

Mgr. A. T. Androus

*Our Motto:*

*"The Best Is None Too Good"*

FOUNTAIN SPECIALTIES

LIGHT LUNCH

TRY A BOX OF OUR MIXED NUTS

BUY YOUR FURNITURE IN ALEXANDRIA, VA.

No High Rents—Large Stock—Low Prices

Delivered Free in Washington

Carfare Allowed

**MICHELBACH'S**

ALEXANDRIA, VA.

**ROBINSON'S**

1306 G N. W.

The Home of

**Baldwin Pianos**

The Instrument Used

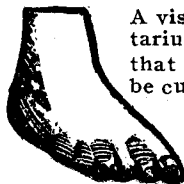
By the

World's Greatest Artists

*Everything Musical*

**CHIROPODIST**

**DR. O. E. JOHNSON**



A visit to my Foot Sanitarium will convince you that all foot ailments can be cured or relieved and deformities corrected. Orthopedic shoes made to order.

811 11th St. N. W.

Fr. 2082-J

"Tis a feat to cure feet"



Dancing is a Necessity  
and not a Luxury

Fashionable  
Dancing  
Taught

**CATHERINE BALLE**

719 9th St. N. W.

# The New Ebbitt Cafe

Make it a point to drop in at the New Ebbitt after the theatre. You will enjoy a little something to eat and a chance to talk before calling it an evening. Our cuisine, service and prices are sure to meet with your approval

RADIO PROGRAM

MUSIC

### MUSICAL NUMBERS

#### THE ELSE AND PAULSEN REVUE

"Paris Isn't Paris Any More".....Rose Shelby  
 "Hinky Dora".....Eddie Heffernan and Girls  
 "Apache Girl".....Dedette Tremayne

#### THE UNIT—ACT TWO

"Love Is a Game of Cards"  
 Herman and Sammy Timberg  
 "If You Want to See How I Look in My Pajamas"  
 Hattie Darling  
 "I Want to Pin This Medal on You"  
 Hattie Darling and Eddie Heffernan  
 "I Want to Pin This Medal on You"  
 Ray King and Vivian Birmingham  
 "I Want to Pin This Medal on You"  
 Eddie Heffernan and Audrey McVey  
 "I Want to Pin This Medal on You"  
 Herman Timberg and Ray King  
 "Gloom Numbers" .....By Six Little Grooms  
 "Joy Numbers" .....By Six Little Joys  
 "Give Me that Cakewalk".....Buck and Bubbles

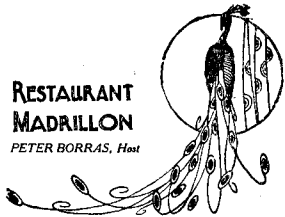
(Program Continued on Page 22)

Gelfand's DELICIOUS MAYONNAISE  
 THE HOUSEWIFE'S only competitor.

Pianos furnished by Arthur Jordan Piano Co.

DR. SHILL, Chiropracist, 1110 F St.

**J**OLLIFY in festive supper mood with the theatre and dance crowd who nightly frequent the enchanting Madrillon.



RESTAURANT  
**MADRILLON**

PETER BORRAS, Host

1304 G Street, Northwest

REASONABLE PRICES AND TEMPTING FOOD AT

## THE SUN SET INN

1523 Eye St. N. W. Next to University Club  
 SERVICE—OR—CAFETERIA

### STEAM TABLE SPECIALS

Hot Waffles with Butter and Honey, 15c  
 French Drip Coffee with Pure Cream, 5c  
 Club Breakfast, 20c to 60c; Business Lunch, 40c  
 Dinner, 60c. Chicken Waffle Dinner, 85c

### FAMOUS HOME-MADE ROLLS AND PASTRIES

HARRY MAYNARD, Mgr.

Frank. 2557 or 3040

Five Minutes Walk from Theater—Oysters in Every Style



# Exclusive Outer Apparel

FOR  
WOMEN AND MISSES

"The New and Different"

Just Received! New fur trimmed coats and wraps for all occasions

717 11th STREET N. W.

Phone Franklin 6314

## MEET ME AT THE Rosemary Balcony

For light lunch delightfully different and individual Hot Dishes

### Rosemary's Own Candies

.60—.80—\$1.00

1403 H Street, N. W.

## Alaska Fur Co.

INC.

Expert  
Furriers

Remodeling and  
Repairing

Coats and Neckpieces  
of All Descriptions

707 12th Street N. W.

Musical Director.....True R. Fristoe

Scenery by P. Dodd Ackerman Studios—Costumes by Mahieu & Co.—Shoes by I. Miller

—EXIT—

"Stealing Hearts" ..... Kamnetz

Pianos furnished by Arthur Jordan Piano Co.  
Furniture Furnished by Maxwell Furniture Co.

DR. SHILL, Chiropodist, 1110 F St.

## Rustic Garden at the "SUN SET INN"

1407 MASSACHUSETTS AVENUE

Supper Dancing

From 9:30 to 12:30

A Most Unique, Charming,

Delightful Supper Room

VISIT

### Sherratt's China Art Store

608 13th Street N. W.

Fine Line White China  
Beautiful Hand-Painted  
China, Suitable for Gifts  
for Every Occasion  
Royal Dux Ornaments

A trial will convince you

## BURKLIN'S

French Dyeing and Cleaning

826 Twelfth Street N. W.

Achille E. Burklin                      Phones  
Proprietor                                      Main 2022-2023

Oldest Established Firm in City

**All Next Week!**

THE NEW YORK WINTER GARDEN

PRESENTS ITS CAMEO REVUE

# The Midnight Rounders

With a Century Theatre Chorus  
and a Cast of Broadway Principals

Catchy Tunes and Dances

Gorgeous Costumes and Scenery

IN COMBINATION WITH

JOE—SMITH & DALE—CHAS.

JANE—GREEN & BLYLER—JIMMY

Jack Strouse, Jean Carroll, Frank J. Corbett, Davey White, Lola Chal-  
fonte, Colin Cameron

AND THE FAMOUS

CLEVELAND BRONNER BALLET

"The Wedding of the Sun and Moon"

---

**SHUBERT-GARRICK** ALL THIS  
WEEK

---

AN ATTRACTION OF UNUSUAL IMPORT

MAURICE S. REVNES PRESENTS

# "FASHIONS FOR MEN"

A COMEDY BY

**FERENCE MOLNAR**

Author of "LILIOM" with

O. P. HEGGIE



# **CADILLAC AND PACKARD LIMOUSINES AND TOURING CARS**

We Specialize on Weddings  
and Other High-Class Service

Liability Insurance carried on all cars

**AUTO LIVERY CO., 212 13th Street  
Phone Main 8000**

---

## **MAGEE'S STRAW RIDES**

We are prepared to furnish Northway AERO MOTOR Trucks  
for Private Parties, Colleges and Seminaries

**Comfort and Ease in Riding Assured**

Each truck is equipped with pneumatic tires, specially designed springs and electric lights. Capacity 30 people.

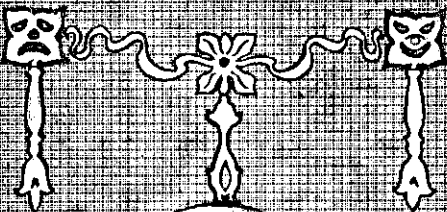
**Rates Exceptionally Reasonable**

**P. J. MAGEE**

**417 SOUTHERN BUILDING**

Day Phone, F. 7817

Night Phone, West 1985-J



MR. E. F. ALBEE  
President & Associate Founder  
of the B. F. Keith Circuit

# The Vaudeville Bill

B. F. KEITH'S  
Theatre  
Washington D. C.

Season 1922-1923

J. M. Gidding & Co.  
Fifth Avenue New York  
1510 H STREET N W OPPOSITE SHOREHAM HOTEL

## Gidding Prices—

OUR collection of Outer Apparel, Furs, Millinery and Accessories for the Autumn and Winter Season of 1922 is much lower in price than it has been for many years, while the Quality, as in the past, is Supreme.

## Beacon Lights of Business

Along perilous coasts, lighthouses throw their guiding rays far into the night to warn the mariners and help them safely past the shoals.

Business, too, has its beacons. They are the advertisements, which throw a powerful light to guide you in your buying. They show you what to buy, where to buy and when to buy.

Spend a few minutes running through the advertisements in this program. Then buy the products that have proved up in the light of advertising.

Manufacturers who advertise deliberately focus thousands of eyes on their products. Their wares must be good, their values honest and their prices right or they could not advertise successfully.

In the advertisements you see products that have made good under the critical inspection of buyers. These products are full value products. They return you dollar for dollar. Buy them.

Let the beacon of advertising guide you as it is guiding so many astute buyers.

*Let Keith's Program be Your  
Beacon Light*



**STOP** that cold  
with  
*Tingle's*  
**LAXO ASPIRIN**

*Sold Everywhere in the "Three Point Box"*

The advertisement features a central illustration of a hand holding a rectangular sign that says "STOP". Above the hand is a triangular logo with the word "Tingle's" in a script font and "LAXO ASPIRIN" in a bold, sans-serif font below it. The background of the advertisement is white with black text and graphics. The entire advertisement is enclosed in a thick black border.

# SUPPER - DANCE

THE RUSTIC GARDEN AT THE SUNSET INN

On the Terrace, 1407 Mass. Ave., Every Weekday Night, 9:30 to 12:30

**"Save the Surface and You Save All"**

You Will Be Proud of Your Home After It Has Been Treated With Our Paint

"Paint for Every Purpose"

**HUGH REILLY CO.**

"Glass for Every Need"

1334 NEW YORK AVENUE

## B. F. KEITH'S THEATRE PROGRAM

ACTS ARE RUN IN THE ALPHABETICAL ORDER GIVEN ONLY WHEN FEASIBLE TO DO SO, AND ARE SUBJECT TO CHANGE WITHOUT NOTICE. IT SHOULD ALSO BE NOTED THAT THE ORDER IN WHICH THEY ARE PLACED ON THE PROGRAM DOES NOT NECESSARILY INDICATE THE VALUE OF THE ACTS.

Washington, D. C., November 6, 1922

*The Mode Says—*

Full Dress and Tuxedo Suits modeled to fashion's latest ideals. Ready for Service

*Eleventh & F Street*

New Housewares Dept.—Sixth Floor **LANSBURGH & BROTHER**

**B. F. KEITH'S THEATRE ORCHESTRA**

March—"City of Ballarat".....Code

---

**AESOP'S FABLES**

Classic Tales Told on the Screen

---

EMERGENCY EXITS INDICATED BY RED LIGHTS



Use "Moore" Printing of the Better Kind



735 13<sup>th</sup> St. Main 808

FOOTWEAR FOR THE DISCRIMINATING  
**HAHN'S CITY CLUB SHOP**  
1318 G STREET NORTHWEST

### GEORGE C. SHAFFER

"Say It With Flowers"

900 FOURTEENTH STREET N. W.

Phones  
MAIN 2416-2417-2418  
Franklin 2362

Member  
Florists' Telegraph Delivery  
Association

### CHIROPODIST

'TIS A FEAT TO CURE FEET  
All foot ailments painlessly and successfully treated by

**DR. O. E. JOHNSON**

811 Eleventh St. N. W.  
Franklin 2082-J

### MULLANE THEATRICAL AGENCY

Producers of  
Shows, Acts and Amusements  
Private and Public Entertainments  
610 CONTINENTAL TRUST BLDG.  
John J. P. Mullane, Gen. Mgr.  
Office: Main 4543 Home: Franklin 7221

### WURDEMAN & COMPANY

Established 1864

FURNITURE UPHOLSTERED, REPAIRED, REFINISHED  
CONNECTICUT AND RHODE ISLAND AVENUES

## THE CHINA

RESTAURANT

606

13th Street N. W.

Between F and G

Most Popular Chinese and American Cafe in Washington

Special Attention to After-Theatre Parties

American Service

Regular Lunch from 11 A. M. to 2 P. M.

Regular Dinner from 5 to 8 P. M.

Special Sunday Dinner from 11:30 A. M. to 8 P. M.

# THE MUNSEY TRUST COMPANY

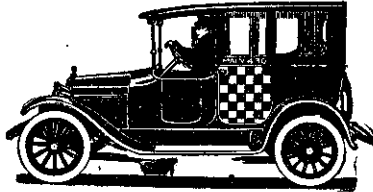
PAYS 4%

ON SPECIAL SAVINGS ACCOUNTS

Banking Room in Munsey Building, Penn. Ave., bet. 13th and 14th Streets

## MAIN 430

ASK FOR A  
RECEIPT



NO EXTRAS  
IN D. C.

## CHECKER CABS

Be a  
**KEITH**  
"fan"  
and sit in  
the same  
seat every  
week  
Ask the  
Box Office  
Man

Fashionable Footwear  
Second Floor

### LANSBURGH & BROTHER



M. E. G. LIME TRIO  
In Their Latest Novelty  
"The Gollywog"

KOVACS AND GOLDNER  
The Wizard of the Piano and the Violin Virtuoso

FOOTWEAR FOR THE DISCRIMINATING  
HAHN'S CITY CLUB SHOP  
1318 G STREET NORTHWEST

An Intelligent  
and Courteous  
PRINTING  
SERVICE

WASHINGTON  
PRINTING CO.  
730 13th Street  
Phone Main 783

## ELIZABETH ARDEN

Beauty has no wings to a wise woman.  
Grow lovelier as you grow older.  
You gain in wisdom—why not in beauty?  
Here's your cue:

*A Course of the Arden Muscle-Strapping Treatments.  
A Supply of the famous Venetian Preparations.*

**SALON D'ORO**  
1147 Connecticut Ave.  
Phone Franklin 4334  
WASHINGTON  
673 Fifth Ave., New York  
Paris, 255 Rue St., Honore



### Washington Printing Co.

## Printing

OF THE BETTER KIND

730 THIRTEENTH STREET N. W.  
PHONE, MAIN 783

*Your Ad in this space will bring results*

# THE RIGGS NATIONAL BANK

Pennsylvania Ave. opposite U. S. Treasury

Dupont Circle

2477 18th St. N. W.

7th and Eye Sts. N. W.

14th St. and Park Road N. W.

1857



1922

## E. H. Broop & Sons Co.

1300 G STREET

Steinway Pianos, Player-Pianos, Victrolas  
Musical Instruments, Music

EFFICIENT SERVICE

Washington's Oldest and Leading Piano House

## BLUE PLATE

Dinner Satisfaction

Artists usually enter "the Hall of Fame" by reason of their masterpiece. As artists in preparing food—our masterpiece is a Blue Plate Dinner.

Served 4:30-8:30 p. m.

*The Boulevard*  
16<sup>th</sup> at You

When You  
Think of  
Learning to  
DANCE,  
Think  
of

### LEROY H. THAYER

1145 Connecticut  
Avenue

Phone, Main 2573

China and Glass-  
ware—Sixth Floor

## LANSBURGH & BROTHER



Milton Aborn Presents

"THE CHINA BLUE PLATE"

A Musical Legend

Book and Lyrics by Jack Arnold  
Musical Numbers by A. Baldwin Sloane

"Silver is less valuable than gold and gold than virtue." Horace  
SCENE 1—The Shanghai Restaurant, Ninth Avenue, New  
York City.

SCENE 2—The China Blue Plate.

SCENE 3—Same as Scene 1.

(Continued on Page 7)

An Intelligent  
and Courteous  
PRINTING  
SERVICE

WASHINGTON  
PRINTING CO.  
730 13th Street  
Phone Main 783

FOOTWEAR FOR THE DISCRIMINATING  
HAHN'S CITY CLUB SHOP  
1318 G STREET NORTHWEST

Phones—Main 2022-2023

## Burklin's

French Dyeing and  
Cleaning

Office, 826 12th St. N. W.  
Washington, D. C.

ACHILLE E. BURKLIN  
Proprietor

Works  
1206-1208 Eye Street N. W.

## ARLINGTON HOTEL

Vermont Ave. Above K  
SAMUEL J. STEINBERGER

Established 1896 Incorporated 1910  
NATIONAL MOSAIC CO.  
Incorporated

Marble, Tiles, Mosaics, Terazzo  
Executors of High Grade Work  
338 Pennsylvania Ave. N. W.  
PHONE, MAIN 2320

## ANGELA KEIR

David Belasco Co.

TEACHER OF  
DRAMA  
AND PRODUCER

HOTEL GORDON

THE NEW AND MODERN

## FAR EAST RESTAURANT

An Oriental Restaurant of the Highest Character—Excellent Service—Best Chinese  
Cooking—Separate Rooms for Ladies. Special Attention to After-Theatre Parties

MR. DER DOO, Proprietor—415 13TH STREET

PHONE, FRANKLIN 2645





**LEVER** lines insure an act vigorous applause. Fried chicken, special steak, hot mince and pumpkin pie are some of the clever lines popularizing the bill-of-fare here now.

**WALLIS'**

*"Washington's Largest Restaurant"*  
12th and G Streets N.W.

Why Pay for a Name?  
**ARE YOU STOUT?**

We carry everything you wear from 42½ to 55 sizes. By shopping here you get value for your money and have a saving of 50%. Come and make us prove it.

We Cater to Stouts and Regulars  
Sizes Sixteen to Fifty-five

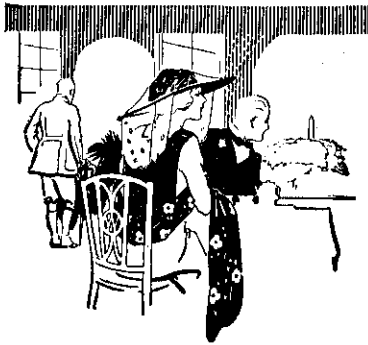
Women's Ready-to-Wear Garments

**GITTELMAN**

STOUT-SLENDER SHOP

1328 7th St. N. W.

Phone, North 7202



Before the Theatre—  
*Dinner on the Veranda*

After the Theatre—  
*Supper and Dancing*

**Wardman Park Hotel**  
Connecticut Avenue and Woodley Road  
**WASHINGTON, D.C.**

3% Paid on Savings    Trust Dept.

While the **OLDEST**  
of the Capital's  
**National Banks**

—"The Metropolitan" is young in spirit, modern in appointments and keenly alive to the advantages of progressive methods in serving depositors.

**National  
Metropolitan Bank**

15th St., Opposite U. S. Treasury

106 Years Old

**Special Attention Given to Ladies Without Escort**

OPEN AFTER THEATRE

# Occidental Restaurant

Try our Oysters, Lobsters, Rarebits, Mexican Chili Concarni,  
American Chop Suey, Italiane Spaghetti Tetrizini,  
Fancy Salads and Sandwiches

AT POPULAR PRICES

ORDER SELECTED THEATRE TICKETS AT OUR NEWSSTAND  
MAIN 6467

—See Gus

## Kafka's

F Street at Tenth

Chic

Youthful

Models in

Girls' Dresses.

Very

Specially Priced

Fashionable Millinery  
—Second Floor

LANSBURGH & BROTHER

FREDA & ANTHONY

in  
"Bartcha-Kalloop"

ROBERT EMMETT KEANE

The Broadway Comedian, and

CLAIRE WHITNEY

The Screen Star, in a Miniature Play

"The Gossipy Sex"

By Lawrence Grattan

(Continued on Page 11)

FOOTWEAR FOR THE DISCRIMINATING  
HAHN'S CITY CLUB SHOP  
1318 G STREET NORTHWEST



Use  
"Moore"  
Printing  
of the  
Better Kind



735 13<sup>th</sup> St.  
Main 808

## HOFFMAN-ALLEN CO.

Ladies' Gowns, Sport  
Clothes and  
Millinery

1143 Connecticut Avenue  
Washington, D. C.

AFTER THE THEATRE



RESTAURANT

Italian Dishes a Specialty

404 TWELFTH STREET N. W.

Phone, Franklin, 4178

RIZPAH ELDON

The World's Noted Medium and Palmist. She stands alone in her profession. As a Scientific Palmist she is accurate. As a Medium she gives name and descriptions of spirit friends, messages and information on all affairs of life, family affairs, business deals, mining and inventions. Office hours, 10 a.m. to 10 p.m.

514 F STREET N. W.

Corner of 6th and F Second Floor

Let Us Make Your Fall  
Gowns and Create  
for You Your  
Head Gear

Miss Anna Harris  
Mrs. Colton

723 ELEVENTH ST. N. W.

Phone, Main 3683

Phone, Franklin 7757

THE REPUBLIC  
AMERICAN-CHINESE  
RESTAURANT

910-912 F ST. N. W.

Washington, D. C.

YOUR AD SHOULD  
APPEAR IN THIS  
SPACE—IT WILL  
BRING RESULTS



# CONCERNING PACKARD

The newly appointed representatives appreciate that present and future Packard owners in Washington are first interested in knowing of the willingness and ability of this corporation to render capable service.

The combined Packard Service Station and Garage—1707 Kalorama Road, one block from Sixteenth Street—is practically in the center of Washington-owned Packards.

Modern equipment, a Packard trained service personnel, and a convenient location make possible prompt, economical and satisfactory service, inspection and repairs.

As a convenient service, Packard cars driven by their owners are garaged with or without delivery, washing, etc., as desired.

Pending completion of our new Sales Building, Connecticut Avenue at S Street, Packard cars are being displayed at 1517 Connecticut Avenue.

All Departments are connected day and night by telephone through North ★600.

The new Packard organization is under the personal management of Mr. Oscar Coolican, its President.

Your inspection of the several Packard closed and open models now on display is cordially invited.

## P-W MOTORS

INCORPORATED

Sales NORTH ★600 Service and Garage  
1517 CONNECTICUT AVE. ALL DEPARTMENTS 1707 KALORAMA ROAD

ASK THE MAN WHO OWNS ONE

# ERLEBACHER

1210-1212 F STREET NORTHWEST

*Presenting the Seasons*

*Creations in*

*Dinner and Afternoon Gowns*

*Furs, Wraps and Coats*

VISIT OUR

NEW MISSES AND JUNIOR  
DEPARTMENT

NEW SECOND FLOOR ANNEX

Jollify in festive  
supper mood with  
the theatre and  
dance crowd who  
nightly frequent  
the enchanting  
Madrillon



1304 G STREET

# W. & J. SLOANE

1508 H STREET NORTHWEST

## Floor Coverings of Unlimited Variety

**PLAIN COLORED CARPETS**, which give a richness and luxuriousness to any floor. In a wide range of qualities and widths up to 20 feet. These are made and kept in stock in all the popular colors. Prices from \$1.85 yd. up.

**SMALL ORIENTAL RUGS**, comprising the largest assortments we have had in several years. In a wide choice of design and colorings and all extremely moderately priced.

**LINOLEUMS** in unlimited patterns and all shades and qualities of Plain Linoleum and Cork Carpet.

Freight paid to all shipping points in the United States. Store hours: 8 A. M. to 5:30 P. M.

Show Place of  
Washington

Louise  
Flower  
Shop

Connecticut Ave.  
At N  
Franklin 3841

Watch Newspapers for  
Important Sales

LANSBURGH & BROTHER



Use  
"Moore"  
Printing  
of the  
Better Kind



735 13<sup>th</sup> St.  
Main 808

CAST:

Alice Grayson.....Claire Whitney  
Phil Grayson.....F. B. Hersome  
Frank Manly.....Robert Emmett Keane

Time—Early evening.

Location—Any fashionable hotel.

Furniture Loaned by United Upholstery Co., 911 7th St. N. W.

INTERMISSION

Trot—"Baby Blue Eyes".....Jessel

FOOTWEAR FOR THE DISCRIMINATING  
HAHN'S CITY CLUB SHOP  
1318 G STREET NORTHWEST

Table d'Hote Dinner  
\$1.50

An especially arranged menu  
that will tempt the appetite of  
the most discriminating diners

MAIN DINING ROOM—New decorations,  
new fittings, everything new

BALLROOM—Facilities for private ban-  
quets, dances and luncheons

Special Luncheon  
75 Cents

For Business Men  
A Special Menu  
Piano Recital

FOURTEENTH  
AT K

FRANKLIN SQUARE HOTEL

FOURTEENTH  
AT K

Riggs-Lafayette  
Baths, Inc.

BARBER SHOP  
& CHIROPODY

Under B. F. Keith's Theatre  
Never Closed

**M**ADELEINE  
ODISTE  
ILLINERY  
DESIGNER, MAKER AND  
IMPORTER

Advance Autumn Models  
Ready for Inspection

1337 CONNECTICUT AVE.  
At Dupont Circle  
Franklin 4448

LUTZ & CO.

Established 1804

Manufacturers and Importers  
Trunks, Bags and  
Leather Goods  
"OF THE BETTER GRADE"

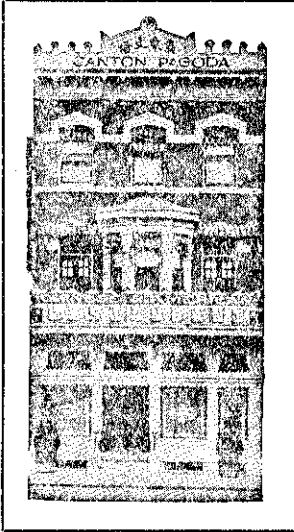
Best American  
and European  
Ladies' and  
Men's Gloves



1325 G STREET N. W.

# The Canton Pagoda

SANITARY SERVICE



CAPITAL'S FAMOUS PLACE

## Chinese & American Restaurant

1343 E St., at Pa. Ave., N. W.

Phone, Main 6354

# Maison Maurice

13th and G Streets, S. E. Corner

Washington  
branch  
of the famous  
Fifth Avenue  
New York  
Establishment



## Millinery

Aristocratically-refined millinery is presented here simultaneously with its appearance in our establishment at 663 Fifth Avenue, New York. Moderately priced.

## Your Blankets Dry Cleaned



Your woolen blankets are returned from this laundry as clean, sweet, fleecy and soft as when new.

The most modern facilities and expert workers are at your command here—save yourself the hard work and bother, and the risk of shrinking them.

PRICE SAME AS FOR  
LAUNDERING, NO MORE

**Frazee-Potomac  
Laundry** Telephone  
Main 822

Main Office and Works  
400-412 Eighteenth St. N. W.

# Auth's Sausage Meat



The Way  
to a Man's  
Heart



# MARION HARRIS—The International Favorite

Makes Records Exclusively for the **Brunswick**  
PHONOGRAMS AND RECORDS

The wonderful machine with the wonderful tone. We carry a complete stock of the Upright and Console models, and a plentiful supply of the latest Brunswick records.

The Brunswick costs no more than ordinary machines, in spite of its superior features.

**BUY ON  
 SCHWARTZ'S  
 CLUB PLAN  
 A LITTLE  
 DOWN,  
 A LITTLE  
 A WEEK**

Here are a few of Marion Harris' records which we can supply immediately from our stock:

- No. 2309—I'm Just Wild About Harry Cradle Melody
- No. 2310—Blue Sweet Indiana Home
- No. 2318—Brother-in-Law Dan Dixie Highway

## CHAS. SCHWARTZ AND SON

Diamond Merchants

708 SEVENTH STREET N. W.

3123 M STREET N. W.

### Kafka's

F Street at Tenth

Coats of

All Styles and

Materials

in Our

Miss Manhattan

Garments

The Infants' Shop  
 —Fourth Floor

### LANSBURGH & BROTHER

"TOPICS OF THE DAY"

MARION HARRIS

The Favorite Phonograph Record Maker

In a Record Breaking Musicale

With J. Russell Robinson, Composer of "Margie," Etc.

FOOTWEAR FOR THE DISCRIMINATING  
**HANN'S CITY CLUB SHOP**  
 1318 G STREET NORTHWEST



An Intelligent  
 and Courteous  
**PRINTING  
 SERVICE**

WASHINGTON  
 PRINTING CO.  
 730 13th Street  
 Phone Main 783

### ALASKA FUR CO., INC.

Full Line of Furs

Remodeling and Repairing  
 Our Specialty

707 Twelfth Street N. W.  
 Phone, Franklin 2709  
 Washington, D. C.

### BEAUTIFUL GIFTS

HAND PAINTED CHINA

A Large Stock of White China  
**Sherratt's China Art Store**  
 608 13th St. N. W. Near F St.



**THE ENGRAVING SHOP**  
 726 13th St. N. W.

### JOHN PHILIP SHADDICK

Bass-Baritone

Teacher and builder of  
 VOICE

Appointment by phone  
 NORTH 7424

Studio  
 1825 Sixteenth St. N. W.

### PREMIUMS PAID ON U. S. GOLD COINS

Stamp Collections Old Coins Bot & Sold

**CHARLES KOHEN**  
 615 Fifteenth Street N. W.  
 PHONE, MAIN 7108  
 Coin Catalogues, 15 Cents

At the Sign of

### "THE SHADE SHOP"

W. STOKES SAMMONS, Prop.

Exclusive  
 Manufacturers of

### Window Shades

830 13th St. N. W.  
 Phone, Main 4874  
 WASHINGTON, D. C.

**\$1,200,000.00**  
**CAPITAL**

**\$14,000,000.00**  
**RESOURCES**

**MONEY  
TO  
LOAN**

## **To Non-Depositors**

With our increased resources we are prepared to make loans to responsible local merchants (without collateral security) and at prevailing rates.

**\$1,200,000.00**  
**CAPITAL**

**\$14,000,000.00**  
**RESOURCES**

# **FEDERAL-AMERICAN NATIONAL BANK**

**1315 F STREET**

**OFFICERS:**

**WILLIAM JOHN EYNON**  
Vice President

**W. J. WALLER**  
Vice President

**CHARLES B. LYDDANE**  
Vice President

**CHARLES D. BOYER**  
Cashier

**W. T. GALLIHER**  
Chairman Board of Directors

**JOHN POOLE**  
President

**WILLIAM C. JOHNSON**  
Assistant to President

**S. LOUISE MITCHELL**  
Assistant Cashier

**WILLIAM M. SEAY**  
Assistant Cashier

**H. H. SHACKELFORD**  
Assistant Cashier

**LEON TOBRINER**  
General Counsel

Meyer Davis' Triumphant Le Paradis Band  
is now playing  
at



# Le Paradis

Washington's Smartest Restaurant  
No. 1 Thomas Circle

Luncheon

Dancing at Tea, Dinner and Supper



Covert Charge \$1.00 at Supper Only

## Kafka's

F Street at Tenth

Personal

Service

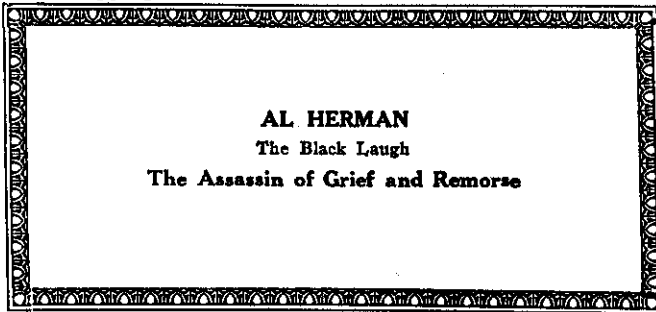
a Feature

at Our

Shop

Begin Christmas  
Shopping Now

## LANSBURGH & BROTHER



AL HERMAN

The Black Laugh

The Assassin of Grief and Remorse

FOOTWEAR FOR THE DISCRIMINATING  
HAHN'S CITY CLUB SHOP  
1318 G STREET NORTHWEST



Use  
"Moore"  
Printing  
of the  
Better Kind



735 13<sup>th</sup> St.  
Main 808

MADE IN WASHINGTON

"CAPITOLIZE YOUR SLEEP"

**CAPITOL BRAND**

**MATTRESSES**

All the good that can be told about a mattress is contained in  
"CAPITOL BRAND" MATTRESSES



Engraved  
Personal Greeting Cards

The early placing of orders will  
assure the best efforts of  
our craftsmen.

A 10% discount will  
be allowed on all orders  
placed during October.

## BREWOD

Engravers for every Occasion  
TWELFTH STREET  
between F and G

**FOR RENT**

**3rd Floor Chandler Bldg.**

**728 13th Street N. W.**

---

**HEAT AND  
ELEVATOR SERVICE**

---

*Inquire*

**730 13th Street N. W.**

**SHAW & BROWN CO.**  
**JEWELERS**

1114 F STREET N. W. Washington City

**PROGRESSIVE HOUSES**  
**ADVERTISE IN THIS**  
**PROGRAM**

**THE ONTARIO GARAGE**

17TH STREET AND KALORAMA ROAD

Is now open for inspection and for service. Every detail will command public approval. Clean storage and the very best of care of cars. A thorough equipment and skilled mechanics for repairs. A large and well-selected line of accessories. Gas, oil, washing, polishing, and SIMONIZING—a feature. Open for care and service 24 hours the day. Courtesy shown in all contact and dealings. Inspect and see if we can fill your wants.

PHONE, COLUMBIA 8727

**Kafka's**

F Street at Tenth

Onyx

Sport Hose

Special at

\$1.00

Exquisite Silk Lingerie  
 —Third Floor

**LANSBURGH & BROTHER**

**DORIS HUMPHREY'S DANCERS**

Present

**A Series of Divertissements**

Assisted by Helen Dobbin, Dorothy Dobbin, Lenora Hellekson,  
 Vera Marsh, Betty Roher

Musical Director, Pauline Lawrence

1. The Enchanted Hour.....Doris Humphrey and Ensemble
2. Maria Maie.....Helen Dobbin  
 (An Italian dancer whose lover, at first attentive, forsakes her for a fair rival.)
3. Soaring.....Doris Humphrey and Ensemble  
 (Aspiration of Spirit and Form, undaunted by fear or difficulty, ever rising to new heights of desire.)

(Continued on Page 19)

**FOOTWEAR FOR THE DISCRIMINATING**  
**HAHN'S CITY CLUB SHOP**  
 1318 G STREET NORTHWEST



Use  
**"Moore"**  
**Printing**  
 of the  
**Better Kind**



**735 13th St.**  
 Main 808

**RELAXATION**  
 and the satisfaction  
 of dining well — is  
 found here always

*Luncheon* -- 65c.  
 12 until 2

*Dinner* -- \$1-  
 5 until 8

• A LA CARTE SERVICE •

**FIRESIDE INN**  
 1214 Connecticut Avenue  
 • PETER C. SORENSEN •

*Woodson*

GOWNS AND  
 FURS

Exclusive Modiste

1337 CONNECTICUT AVE.

Franklin 4448

**LOANS**  
**HORNING**

Diamonds—Watches—Jewelry

South End of Highway Bridge  
 (Business transacted exclusively there)  
 Take cars at 12th and Pennsylvania  
 Avenue for south end of bridge. One  
 car ticket each way

**ENGELBERG'S**  
**AUTO TOP CO.**

TOPS BUILT AND  
 RECOVERED

We Save You Money on Your  
 Auto Tops, Side Curtains, Seat  
 Covers and Hood Covers, Gas-  
 oline, Oil and Auto Accessories.

1783 U ST. N. W.

Phone, N. 9763 18th and U Sts.  
 Residence Phone, North 333

**PROF. CHAS. WOOLSEY**

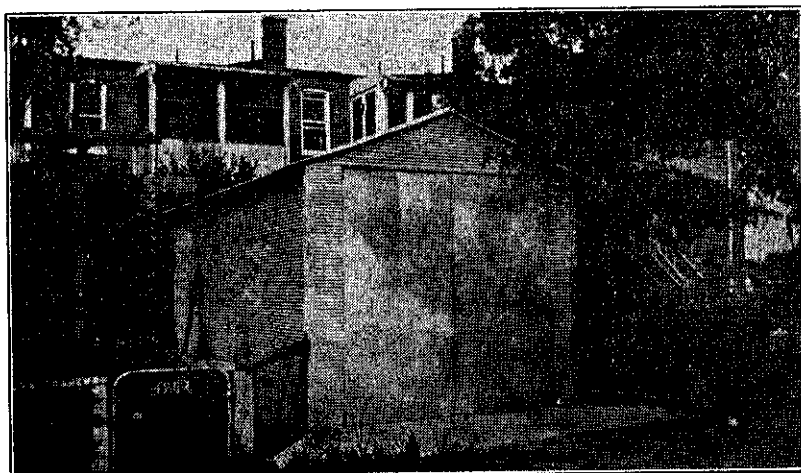
Teacher of { Piano Harmony  
 Voice  
 Violin Included

**Teaching Parlors: 922 M St. N.W.**

Phone North 10252

Your Patronage Invited





## G A R A G E S

Built by the P. A. ROBERTS CONSTRUCTION CO., INC.

Successors to PRESTON A. ROBERTS

Do you realize that you can have a well-built garage placed in your own back yard for only \$10.00 and pay the balance in installments as low as \$10.00 per month?

Call at the Munsey Building or Phone Main Seventeen Seventy-six

"A Revolution in Garage Building"

Remember the name—ROBERTS



STOP

STOP that cold  
with

*Jingle's*

**LAXO ASPIRIN**

*Sold Everywhere in the "Three Point Box"*

# The New Ebbitt Cafe

F at Fourteenth

When you dine you want Comfort,  
Good Food, Prompt Service: you get  
them at the New Ebbitt. We specialize  
in pleasing.

**RADIO PROGRAM**  
**MUSIC**

## EDITORS OF SCIENTIFIC PUBLICA- TIONS

Many of them have  
found that the half-  
tone plates produced  
by us are technically  
perfect.

**Maurice Joyce**  
**Engraving Co.**

H. C. C. STILES, Gen'l Mgr.  
Evening Star Bldg. Washington

OFFICE  
STATIONERY  
WELL  
PRINTED

WASHINGTON  
PRINTING CO.  
730 13th St.  
Phone Main 783

New Colonial Pumps  
—Second Floor

**LANSBURGH & BROTHER**

4. The Legend of the Genie  
Doris Humphrey, Dorothy Dobbin, Lenora Hellekson  
(An ancient Arabian tale of a Genie who, after being  
imprisoned and cast into the sea, is caught in a fisher-  
man's net and liberated by the curiosity of the fisher-  
man's daughters.)
5. First Voices of Spring  
Betty Roher, Lenora Hellekson, Vera Marsh
6. Dance with a Bow  
and Bacchanale.....Doris Humphrey and Ensemble

### PATHE NEWS PICTORIAL

Exit March—"You'll Be Lonely Too".....Van and Schenck

**FOOTWEAR FOR THE DISCRIMINATING  
HAHN'S CITY CLUB SHOP**  
1318 G STREET NORTHWEST



Always  
Fun, Song,  
Dance  
and  
Diversion  
at  
**KEITH'S**

## DISTRICT NATIONAL BANK

(2 Doors East of the Theatre)

If you are a depositor  
of the District National  
Bank everything per-  
taining to your busi-  
ness interests us. With  
our extensive and  
efficient organization  
we are able to sup-  
ply a service which  
is characterized by  
promptness and help-  
ful cooperation.

3% INTEREST PAID ON  
SAVINGS ACCOUNTS  
SAFE DEPOSIT BOXES  
\$3.00 to \$25.00 per annum



Come Here for Your  
**STATIONERY**

Correspondence cards,  
papers and envelopes  
in complete variety—  
largest assortment in  
the city

R-P  
**Andrew's PAPER**  
COMPANY

727-731 Thirteenth Street  
Between G and H  
FRANKLIN 6060

Paint Your Own Car  
One Day and Drive It  
the Next With  
**KWICKWORK**  
AUTOMOBILE ENAMEL

**E. J. Murphy Co.**  
Paints, Oils, Glass  
710 Twelfth St. N. W.

Main 5280  
Thrift Club Checks Issued

**MERCHANTS' TRANSFER  
AND STORAGE CO.**  
Storage, Packing, Shipping

ESTIMATES FURNISHED  
Phone Main 6900 920-922 E St. N. W.

# CORBY'S

# KRUSHED-WHEAT

TRADE MARK

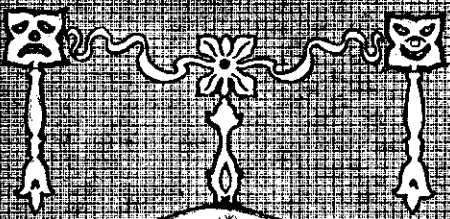
# LOAF

It is a distinctive Bread—made of the whole wheat; by the Corby Scientific Process—and is most palatable. Besides, it is mildly laxative—of which your physician will approve.

At your grocer's or delicatessen's

Guaranteed by

*The Corby Baking Company*



MR. E. F. ALBEE  
President & Associate Founder  
of the B.F. Keith Circuit

# The Vaudeville Bill

## B.F. KEITH'S Theatre Washington D.C.

Season 1922-1923



**J.M. Gidding & Co.**  
Fifth Avenue New York  
1510 H STREET N.W. OPPOSITE SHOREHAM HOTEL

### SMART MODES *for Every Occasion*

**T**O greet the Social Season, GIDDING'S have prepared a most comprehensive display of dainty, lovely feminine Outer Apparel that reflects originality, character and distinction.

*Attractive Values*

# Beacon Lights of Business

Along perilous coasts, lighthouses throw their guiding rays far into the night to warn the mariners and help them safely past the shoals.

Business, too, has its beacons. They are the advertisements, which throw a powerful light to guide you in your buying. They show you what to buy, where to buy and when to buy.

Spend a few minutes running through the advertisements in this program. Then buy the products that have proved up in the light of advertising.

Manufacturers who advertise deliberately focus thousands of eyes on their products. Their wares must be good, their values honest and their prices right or they could not advertise successfully.

In the advertisements you see products that have made good under the critical inspection of buyers. These products are full value products. They return you dollar for dollar. Buy them.

Let the beacon of advertising guide you as it is guiding so many astute buyers.

*Let Keith's Program be Your  
Beacon Light*



**STOP**

**STOP** that cold  
with

*Jingle's*

**LAXO ASPIRIN**

*Sold Everywhere in the "Three Point Box"*

# FOR RENT — Third Floor Chandler Building

728 13th Street N. W. Heat and Elevator Service

Inquire 730 13th Street, N.W.

**"Save the Surface and You Save All"**

You Will Be Proud of Your Home After It Has Been Treated With Our Paint

"Paint for Every Purpose"

**HUGH REILLY CO.**

"Glass for Every Need"

1334 NEW YORK AVENUE

## B. F. KEITH'S THEATRE PROGRAM

ACTS ARE RUN IN THE ALPHABETICAL ORDER GIVEN ONLY WHEN FEASIBLE TO DO SO, AND ARE SUBJECT TO CHANGE WITHOUT NOTICE. IT SHOULD ALSO BE NOTED THAT THE ORDER IN WHICH THEY ARE PLACED ON THE PROGRAM DOES NOT NECESSARILY INDICATE THE VALUE OF THE ACTS.

Washington, D. C., November 20, 1922

New Housewares  
Dept.—Sixth Floor

**LANSBURGH & BROTHER**

*The Mode  
Says—*

Ready with  
the Xmas  
showing of  
House Coats  
and  
Bath Robes  
English and  
American  
makes

*Eleventh &  
F Streets*

**B. F. KEITH'S THEATRE ORCHESTRA**

March—"The Fighting Yanks".....Crosby

**AESOP'S FABLES**  
Classic Tales Told on the Screen

EMERGENCY EXITS INDICATED BY RED LIGHTS

"They Have Such Beautiful Shoes!"  
—You hear that everywhere about  
**HAHN'S "City Club Shop," 1318 G St.**



Use  
**"Moore"**  
Printing  
of the  
Better Kind



**735 13th St.**  
Main 808

## GEORGE C. SHAFFER

"Say It With Flowers"

900 FOURTEENTH STREET N. W.

Phones  
MAIN 2416-2417-2418  
Franklin 2362

Member  
Florists' Telegraph Delivery  
Association

YOUR AD SHOULD  
APPEAR IN THIS  
SPACE—IT WILL  
BRING RESULTS

## MULLANE THEATRICAL AGENCY

Producers of  
Shows, Acts and Amusements  
Private and Public Entertainments  
610 CONTINENTAL TRUST BLDG.  
John J. P. Mullane, Gen. Mgr.  
Office: Main 4543 Home: Franklin 7221

## WURDEMAN & COMPANY

Established 1864

FURNITURE UPHOLSTERED, REPAIRED, REFINISHED  
CONNECTICUT AND RHODE ISLAND AVENUES

## THE CHINA

RESTAURANT

606

13th Street N. W.

Between F and G

Most Popular Chinese and  
American Cafe in Washington

Special Attention to  
After-Theatre Parties

American Service

Regular Lunch from 11 A. M. to  
2 P. M.

Regular Dinner from 5 to  
8 P. M.

Special Sunday Dinner from  
11:30 A. M. to 8 P. M.

# THE MUNSEY TRUST COMPANY

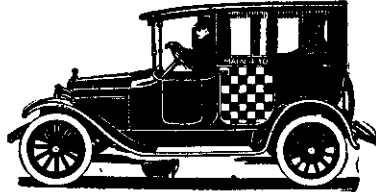
PAYS **4%**

ON SPECIAL SAVINGS ACCOUNTS

Banking Room in Munsey Building, Penn. Ave., bet. 13th and 14th Streets

## MAIN 430

ASK FOR A  
RECEIPT



NO EXTRAS  
IN D. C.

## C H E C K E R   C A B S



Diamond Specialists

**New Store  
New Goods  
New Prices**

Select your presents now  
Small deposit will reserve anything in stock

**Oppenheimer & Shah**

907 F St., N. W.  
Phone, Main 5492

Fashionable Footwear  
Second Floor

### LANSBURGH & BROTHER

RICH HAYES  
"The Lazy Clown"

Bill—DOOLEY & STOREY—Helen  
Vaudeville a la Carte

"Broguey" Winter Oxfords & Wool Hose  
For Young Men and Women  
**HAHN'S "City Club Shop," 1318 G St.**



An Intelligent  
and Courteous  
**PRINTING  
SERVICE**

**WASHINGTON  
PRINTING CO.**

730 13th Street  
Phone Main 783

1857



1922

### E. H. Dronp & Sons Co.

1300 G STREET

Steinway Pianos, Player-Pianos, Victrolas  
Musical Instruments, Music

EFFICIENT SERVICE

Washington's Oldest and Leading Piano House

### When It's Painting Paper Hanging

If you are in a hurry  
Phone Columbia 1077

### HARRY W. TAYLOR

2333 18th St. N. W.

*Your Ad in this space will bring results*

# THE RIGGS NATIONAL BANK

Pennsylvania Ave. opposite U. S. Treasury

Dupont Circle

7th and Eye Sts. N. W.

2477 18th St. N. W.

14th St. and Park Road N. W.

## ELIZABETH ARDEN

Beauty has no wings to a wise woman.  
Grow lovelier as you grow older.  
You gain in wisdom—why not in beauty?  
Here's your cue:

*A Course of the Arden Muscle-Strapping Treatments.  
A Supply of the famous Venetian Preparations.*

### SALON D'ORO

1147 Connecticut Ave.

Phone Franklin 4334

WASHINGTON

673 Fifth Ave., New York  
Paris, 255 Rue St., Honore



## SURPRISE Thanksgiving Day Nov. 30th

An unusual table d'hote dinner with a most unusual feature. Details to be had in the TIMES—Monday—Wednesday and Friday of this week.

*The Boulevard  
16th at You*

Page 3—Can't miss it!

When You  
Think of  
Learning to  
DANCE,  
Think  
of

## LEROY H. THAYER

1145 Connecticut  
Avenue

Phone, Main 2573

China and Glass-  
ware—Sixth Floor

## LANSBURGH & BROTHER

### LAURA PIERPONT

And Her Players

in

### "The Guiding Star"

An Unusual Offering

Written by Edgar Allan Woolf Staged by Taylor Granville

CAST:

Japhet Deering.....J. R. Armstrong  
Ellen Deering, his wife.....Carolyn Mackey

(Continued on Page 7)

Shoe-Fashion, Original But Refined,  
The "Guiding Star" at

HAHN'S "City Club Shop," 1318 G St.



An Intelligent  
and Courteous  
PRINTING  
SERVICE

WASHINGTON  
PRINTING CO.  
730 13th Street  
Phone Main 783

Phones—Main 2022-2023

## Burklin's

*French Dyeing and  
Cleaning*

Office, 826 12th St. N. W.  
Washington, D. C.

ACHILLE E. BURKLIN  
Proprietor

Works  
1206-1208 Eye Street N. W.

## ARLINGTON HOTEL

Vermont Ave. Above K  
SAMUEL J. STEINBERGER

Established 1896 Incorporated 1910  
NATIONAL MOSAIC CO.  
Incorporated

Marble, Tiles, Mosaics, Terazzo  
Executors of High Grade Work  
338 Pennsylvania Ave. N. W.

PHONE, MAIN 2320

## ANGELA KEIR

David Belasco Co.

TEACHER OF  
DRAMA  
AND PRODUCER

HOTEL GORDON

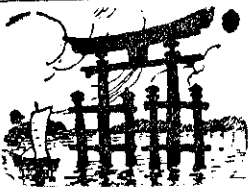
THE NEW AND MODERN

## FAR EAST RESTAURANT

An Oriental Restaurant of the Highest Character—Excellent Service—Best Chinese  
Cooking—Separate Rooms for Ladies. Special Attention to After-Theatre Parties

MR. DER DOO, Proprietor—415 13TH STREET

PHONE, FRANKLIN 2645





# PALMETTO INN

917 Sixteenth St. N. W.

Below K Street



**SPOON BREAD**

**SALLY LUNN**

**BEATEN BISCUIT**

Always a reminder of an  
old-time South Carolina  
Kitchen

**BREAKFAST, 50c**

**LUNCHEON, 40c, 60c**

Also a la Carte

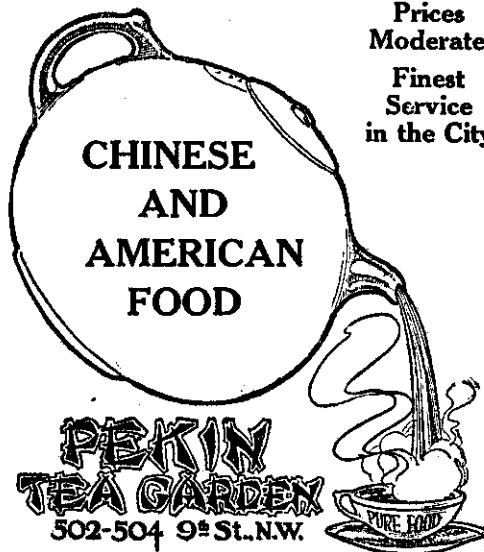
Enjoy a Different  
Dinner

5:30 to 7:30, \$1.00

Special Monthly Rates

*Now Open*  
After Extensive  
Improvements

Prices  
Moderate  
Finest  
Service  
in the City



**CHINESE  
AND  
AMERICAN  
FOOD**

**PEKIN  
TEA GARDEN**  
502-504 9th St. N.W.

Under the Management of  
**MRS. DUVALL**  
of the Dower House

## The Federation Tea House

1734 N Street Northwest

Phone, Main 961

The Most Beautiful Tea House  
in town

**"Eight Twenty"**

820 Connecticut Avenue N. W.

Phone, Franklin 6222

ANYTHING FROM A SANDWICH  
TO A DINNER

## BLICK BROS.

W. D. BLICK, Prop.

# Coal & Wood

**QUALITY  
AND  
SERVICE**

Main Office

**1337 Conn. Ave. N. W.**

Phones, Main 1094-1099

800 Florida Avenue N. W.

Phones, North 9203-9204



After the show there's  
**Music - Dancing - LIFE**  
 at

**Harvey's**

FAMOUS RESTAURANT  
 Pennsylvania Ave. at 11th Street

Specialists in Sea Food for Over Half a Century

Learn to Play  
 Ragtime in 5 Lessons  
 and Get Your  
 Instrument Free

Mandolin; Banjo; Guitar; Violin;  
 Ukelele; Banjorine (Banjo-Man-  
 dolin); Tenor Banjo; Drums.

You are cordially invited to call  
 at the studio, which is centrally  
 located. Open until 10 P. M.

**DIXON  
 STUDIOS**

612 Thirteenth St. N. W.

**McDEVITT**  
 Interesting Furniture

—values are always to be found  
 here. For instance, we offer 3-pc.  
**OVERSTUFFED LIVING ROOM  
 SUITES**, loose cushion, velour or  
 tapestry, for as little as . . . \$125  
 3 x 6 Window Shades, 50c.

1003 9th St., N. W.

Phone  
 Main  
 3211

New Winter Coats  
 —Second Floor

**LANSBURGH & BROTHER**

"Skinny" . . . . . John McKenna  
 and  
 Mary . . . . . LAURA PIERPONT

SCENE: Sitting room of a New Hampshire home  
 TIME: Late afternoon on a winter's day

Staff for Miss Pierpont  
 Harry Lane . . . . . Master Mechanic  
 John Beck . . . . . Electrician  
 Jane Calender . . . . . Wardrobe Mistress

Smart Shoes, for Thanksgiving Day  
 SLIPPERS for the evening after  
**HAHN'S "City Club Shop," 1318 G St.**



An Intelligent  
 and Courteous

**PRINTING  
 SERVICE**

WASHINGTON  
 PRINTING CO.  
 730 13th Street  
 Phone Main 783

Side Curtains  
 Storm and Dust Covers  
 We also make English Bur-  
 bank Automobile Seat Covers

**BOSTON  
 AUTOMOBILE TOP  
 COMPANY**

N. Berezoski, Prop.  
 1825 14TH ST. N. W.  
 Phone, North 10042  
 Top Repairing and Recovering  
 Automobile Upholstering  
 a Specialty

**BRENTANO'S**

CIRCULATING LIBRARY  
 Twelfth and F Streets

Every new novel worth reading  
 may be found in our Circulating  
 Library—plenty of copies. Books  
 exchanged as often as you wish  
 without extra charge. Low rates  
 by day, month or year. Best  
 service in Washington

**MT. VERNON**

VIA  
 Steamer Charles Macalester

**85c**

Admission 25c Additional  
 Steamer leaves Seventh St.  
 Wharf 10 A. M. and 2:30 P. M.

**HAVE THAT BATTERY TESTED!**

FREE SERVICE ALL MAKES OF BATTERIES

**MARYLAND BATTERY SERVICE, INC.**

Westinghouse Batteries

1019 17TH STREET N. W.

Open Evenings



**LEVER** lines insure an act vigorous applause. Fried chicken special steak, hot mince and pumpkin pie are some of the clever lines popularizing the bill-of-fare, here now.

## WALLIS'

"Washington's Largest Restaurant"  
12th and G Streets N.W.

# GITTELMAN'S

STOUT-SLENDER SHOP

1328 7th St. N. W.

Phone, North 7202

Regular sizes 16 to 44

Stout sizes 38½ to 55

We are featuring for this week Coats of Bolovia, Yalama, Broadcloth, Kersey, Brocaded Plushes, in wrappy models trimmed with large fur collars and cuffs, also the straight line coats in sizes to 55 in suitable shades for Fall and Winter wear. Prices range from \$19.98 to \$55.00.



After the Theatre—

Supper and Dancing  
Special Dinner Dance  
Every Saturday Evening

Dinner \$3.50 per couvert  
Also a la carte service

**Wardman Park Hotel**  
Connecticut Avenue and Woodley Road  
WASHINGTON, D.C.

3% Paid on Savings    Trust Dept.

## While the OLDEST of the Capital's National Banks

—"The Metropolitan" is young in spirit, modern in appointments and keenly alive to the advantages of progressive methods in serving depositors.

## National Metropolitan Bank

15th St., Opposite U. S. Treasury

106 Years Old

# BEFORE OR AFTER THEATRE

DINE WITH PLEASANT SURROUNDINGS  
AT POPULAR PRICES

## Hotel Occidental

3-ROOM SUITES WITH  
BATH, \$6.00 PER DAY

ROOMS WITH BATH,  
\$2 AND \$3 PER DAY

CHOICE THEATRE TICKETS—Phone Main 6467

Gus. Buchholz & Son, Proprietors

### Kafka's

F Street at Tenth

Specialists in

Children's

Apparel

for

Ten Years

Fashionable Millinery  
—Second Floor

### LANSBURGH & BROTHER

#### JIMMY LUCAS

Writer of "Minnie Shimmie"—"I Love My Wife But Oh  
You Kid"—"Don't Forget the Salvation Army"  
and other hits

with

FRANCENE

in

"Vampires & Fools"

"Class" from Start to Finish

Men's "FLORSHEIM" Shoes

HAHN'S "City Club Shop," 1318 G St.



Use  
"Moore"  
Printing  
of the  
Better Kind



735 13<sup>th</sup> St.  
Main 808

### HOFFMAN- ALLEN CO.

Ladies' Gowns, Sport  
Clothes and  
Millinery

1143 Connecticut Avenue  
Washington, D. C.

### AFTER THE THEATRE

*Gallotti's*  
ITALIAN-AMERICAN

#### RESTAURANT

Italian Dishes a Specialty

404 TWELFTH STREET N. W.  
Phone, Franklin, 4178

#### RIZPAH ELDON

The World's Noted Medium and Palm-  
ist. She stands alone in her profession.  
As a Scientific Palmist she is accurate.  
As a Medium she gives name and de-  
scriptions of spirit friends, messages and  
information on all affairs of life, family  
affairs, business deals, mining and in-  
ventions. Office hours, 10 a.m. to 10 p.m.

514 F STREET N. W.  
Corner of 6th and F Second Floor

Let Us Make Your Fall  
Gowns and Create  
for You Your  
Head Gear

Miss Anna Harris  
Mrs. Colton

723 ELEVENTH ST. N. W.  
Phone, Main 3683

Phone, Franklin 7757

### THE REPUBLIC AMERICAN-CHINESE RESTAURANT

910-912 F ST. N. W.  
Washington, D. C.

YOUR AD SHOULD  
APPEAR IN THIS  
SPACE—IT WILL  
BRING RESULTS

# The Flower Can't Affo



## LOUISE FLO

1301 Connecticut A

Requests the honor of your

Monday morning, M

Until November

Hours

Eight A. M. until Ten P. M.

**Show You  
rd to Miss**



**OWER SHOP**

**venue, at N Street**

**company at a Flower Show**

**November twentieth**

**twenty-seventh**

**Music**

# SHAW & BROWN CO.

JEWELERS

1114 F STREET N. W. Washington City

THE ORIGINAL FAMOUS CARMELS



One Store  
Ninth and G Sts., N. W.  
Washington, D. C.

WASHINGTON

NEW YORK

# L. Kasal

OF NEW YORK

— FURRIER —

CITY CLUB BLDG., 1312 G ST., N.W.

Furs of quality and superior workmanship denotes economy in purchasing same.

STORAGE

REMODELING

# Breslau

Opposite the City Club  
1309 G Street, N. W.

GOWNS — HATS — WRAPS

Where Style, Quality and Reasonable Prices Have Made For Us a Remarkable Clientele

Show Place of  
Washington

Louise  
Flower  
Shop

Connecticut Ave.  
At N  
Franklin 3841

Watch Newspapers for  
Important Sales

## LANSBURGH & BROTHER

Lewis & Gordon Present  
EDNA AUG & COMPANY

in  
"Day Dreams"

A New One Act Comedy by Edwin Burke

CAST:

Lena, a Scrubwoman.....Edna Aug  
Mrs. Shontz, a Scrubwoman.....Olive West  
The Boss Cleaner.....Bert Robinson  
Signor Campanello.....James Moore

SCENE: Stage of the Metropolitan Opera House  
TIME: Morning

"Dreams" — Night or Day  
The constant Style — Arrivals at  
HAHN'S "City Club Shop," 1318 G St.



Use  
"Moore"  
Printing  
of the  
Better Kind



735 13<sup>th</sup> St.  
Main 808

Table d'Hote Dinner  
\$1.50

An especially arranged menu that will tempt the appetite of the most discriminating diners

FOURTEENTH  
AT K

MAIN DINING ROOM—New decorations,  
new fittings, everything new

BALLROOM—Facilities for private banquets, dances and luncheons

Special Luncheon  
75 Cents

For Business Men  
A Special Menu  
Piano Recital

FOURTEENTH  
AT K

## FRANKLIN SQUARE HOTEL

# Riggs-Lafayette Baths, Inc.

BARBER SHOP  
& CHIROPODY

Under B. F. Keith's Theatre  
Never Closed

# MADELEINE ODISTE ILLINERY

DESIGNER, MAKER AND  
IMPORTER

Advance Autumn Models  
Ready for Inspection

1337 CONNECTICUT AVE.  
At Dupont Circle  
Franklin 4448

# LUTZ & CO.

Established 1804

Manufacturers and Importers  
Trunks, Bags and  
Leather Goods  
"OF THE BETTER GRADE"

Best American  
and European  
Ladies' and  
Men's Gloves



1325 G STREET N. W.

# W. & J. SLOANE

1508 H STREET NORTHWEST

## DOMESTIC RUGS

of the highest character of designs, materials and finish; but at prices low in proportion to their merit.

Body Brussels, Axminsters, Wiltons, Scotch Style Rugs, and Plain Color Chenilles.

From 2.3 x 4.6 to 11.3 x 15.0.

Free delivery to all shipping points in the United States

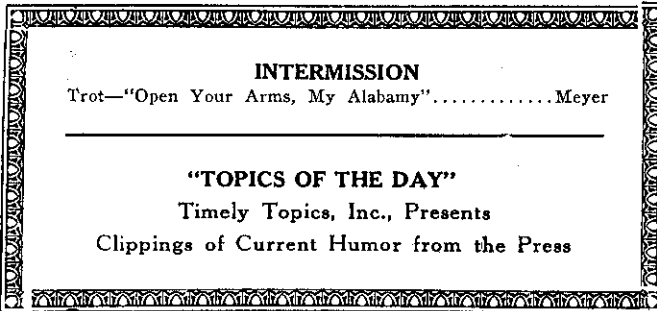
### Kafka's

F Street at Tenth

New Models  
in Street  
and Afternoon  
Dresses  
at Very Low  
Prices

The Infants' Shop  
—Fourth Floor

### LANSBURGH & BROTHER



#### INTERMISSION

Trot—"Open Your Arms, My Alabama"..... Meyer

#### "TOPICS OF THE DAY"

Timely Topics, Inc., Presents

Clippings of Current Humor from the Press

Thinking about Christmas Gifts?

Smart Shoes, Hosiery, Slipper Buckles—

HAHN'S "City Club Shop," 1318 G St.



An Intelligent  
and Courteous  
PRINTING  
SERVICE

WASHINGTON  
PRINTING CO.  
730 13th Street  
Phone Main 783

### ALASKA FUR CO., INC.

Full Line of Furs

Remodeling and Repairing  
Our Specialty

707 Twelfth Street N. W.  
Phone, Franklin 2709  
Washington, D. C.

### BEAUTIFUL GIFTS

HAND PAINTED CHINA

A Large Stock of White China  
Sherratt's China Art Store  
608 13th St. N. W. Near F St.



THE ENGRAVING SHOP  
726 13th St. N. W.

### JOHN PHILIP SHADDICK

Bass-Baritone

Teacher and builder of  
VOICE

Appointment by phone  
NORTH 7424

Studio  
1825 Sixteenth St. N. W.

### PREMIUMS PAID ON U. S. GOLD COINS

Stamp Collections  
Old Coins Bought and Sold  
CHARLES KOHEN

615 Fifteenth Street N. W.

MAIN 7108

Coin Catalogues, 15c

At the Sign of

### "THE SHADE SHOP"

W. STOKES SAMMONS, Prop.

Exclusive  
Manufacturers of

### Window Shades

830 13th St. N. W.

Phone, Main 4874  
WASHINGTON, D. C.



Buy her for Christmas the Perfumes that are Different  
**GOLLIWOGG — The Ideal Idol**

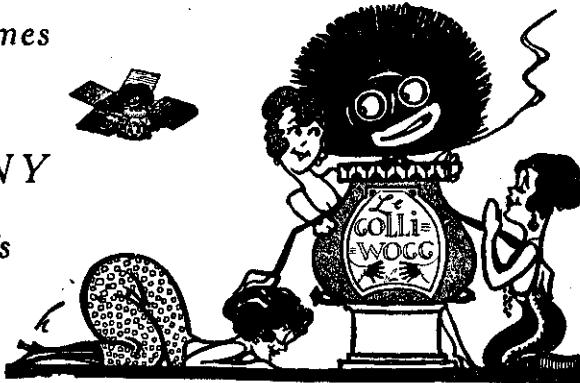
*“The Lucky Little Feller”*

Perfumes

by

VIGNY

Paris



We deliver  
anywhere in  
the city.  
Our store is  
as close to you  
as your  
phone.

Sold by **THE MONTEREY PHARMACY**

Connecticut Avenue and Porter Street N. W., Phone, Cleveland 2297

**ERLEBACHER**

1210-1212 F STREET NORTHWEST

—  
*French Perfume*

*French Negligee and*

*French Underwear*

*On Display*

—  
*On First Floor*

—  
**Buy Now for Xmas**

**WHEN BUSY  
ADVERTISE;  
WHEN DULL  
ADVERTISE  
MORE**

*in*

B. F. Keith's Theatre  
Program. Many Wash-  
ington Business Men  
have utilized these  
pages to advertise their  
goods with marked suc-  
cess. Call Main 783.

Meyer Davis' Triumphant Le Paradis Band  
is now playing  
at



**Le Paradis**  
Washington's Smartest Restaurant  
No. 1 Thomas Circle

Luncheon

Dancing at Tea, Dinner and Supper



Covert Charge \$1.00 at Supper Only

**Kafka's**

F Street at Tenth

Brushed  
Wool Sets  
for the  
Little Tots,  
as Popular  
as Ever

Begin Christmas  
Shopping Now

**LANSBURGH & BROTHER**

E. F. Albee  
Presents  
MLLE. GERMAINE MITTY & M. EUGENE TILLIO  
in  
"La Danse Jalouse"  
Direct from the Casino de Paris, France

Exquisite Slippers for the Dance—  
Silver, Gold, Satins, Brocades  
HAHN'S "City Club Shop," 1318 G St.



Use  
"Moore"  
Printing  
of the  
Better Kind



735 13<sup>th</sup> St.  
Main 808

**FIRST IN  
SERVICE**



WASHINGTON  
PRINTING CO.  
730 THIRTEENTH ST.  
TELEPHONE MAIN 783

Buy Her a Kodak  
for Christmas  
BUY NOW

Large Stock to Select From  
**FRANKLIN & CO.**  
Established 1861  
G. F. HEILPRIN, Prop.  
OPTICIANS  
1329 F Street, N. W.

YOUR AD SHOULD  
APPEAR IN THIS  
SPACE—IT WILL  
BRING RESULTS

**THE YARN  
SHOP**

1 THOMAS CIRCLE  
Vermont Ave. at 14th St.

Knit Them Yourself

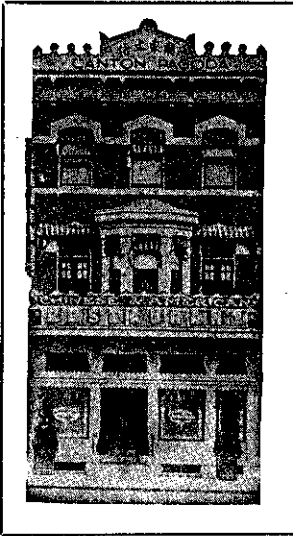
Start Now for  
the Holidays

Sweaters—Tams—Scarfs  
Baby Jackets and Hats

Free Instruction

# The Canton Pagoda

SANITARY SERVICE



CAPITAL'S FAMOUS PLACE

**Chinese & American Restaurant**  
 1343 E St., at Pa. Ave., N. W.  
 Phone, Main 6354



To advertise in this program means that you are telling your story to a distinguished people. Your advertisement in this space will bring results.

CALL MAIN 783

Your Blankets  
 Dry Cleaned



Your woolen blankets are returned from this laundry as clean, sweet, fleecy and soft as when new.

The most modern facilities and expert workers are at your command here — save yourself the hard work and bother, and the risk of shrinking them.

PRICE SAME AS FOR  
 LAUNDERING, NO MORE

**Frazee-Potomac  
 Laundry** Telephone  
 Main 822

Main Office and Works  
 400-412 Eighteenth St. N. W.

# Auth's

## Sausage Meat



The Way  
 to a Man's  
 Heart



The Ne Plus Ultra in  
Men's Tailoring is

# J. M. Stein Clothing

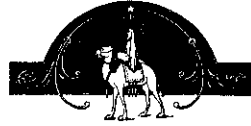
Fabric, fit and form impart that DISTINCT-  
IVENESS for which London, Paris and  
New York are famous.

An immense display of im-  
ported and domestic mater-  
ial for suits, overcoats, etc.

## J. M. STEIN & CO.

Young Men's Tailors

523 THIRTEENTH ST. N. W. (Just Below F)



Engraved  
Personal Greeting Cards

The Brewood originations are  
now ready for your selection.

The early placing of orders will  
assure the best efforts of  
our craftsmen.

## BREWOD

Engravers for every Occasion  
TWELFTH STREET  
between F and G

## Kafka's

F Street at Tenth

Coats  
in an  
Abundance  
of Styles  
for Women  
and  
Misses

Exquisite Silk Lingerie  
—Third Floor

## LANSBURGH & BROTHER

The Favorite Character Comedian

**BEN WELCH**

Assisted by

FRANK P. MURPHY

in

"Pals"

An Original Character Study



Use  
"Moore"  
Printing  
of the  
Better Kind



735 13<sup>th</sup> St.  
Main 808

Men's "Florsheim" Shoes—  
Are "PALS" with Quality!  
HAHN'S "City Club Shop," 1318 G St.

RELAXATION  
and the satisfaction  
of dining well — is  
found here always

Luncheon — - 65c.  
12 until 2

Dinner — - - \$1.  
5 until 8

• A LA CARTE SERVICE •

**FIRESIDE INN**  
1214 Connecticut Avenue  
• PETER C. SORENSEN •

*Hoodson*

GOWNS AND  
FURS

Exclusive Modiste

1337 CONNECTICUT AVE.

Franklin 4448

## LOANS HORNING

Diamonds—Watches—Jewelry

South End of Highway Bridge  
(Business transacted exclusively there)  
Take cars at 12th and Pennsylvania  
Avenue for south end of bridge. One  
car ticket each way

## ENGELBERG'S AUTO TOP CO.

TOPS BUILT AND  
RECOVERED

We Save You Money on Your  
Auto Tops, Side Curtains, Seat  
Covers and Hood Covers, Gas-  
oline, Oil and Auto Accessories.

1783 U ST. N. W.

Phone, N. 9763 18th and U Sts.  
Residence Phone, North 333

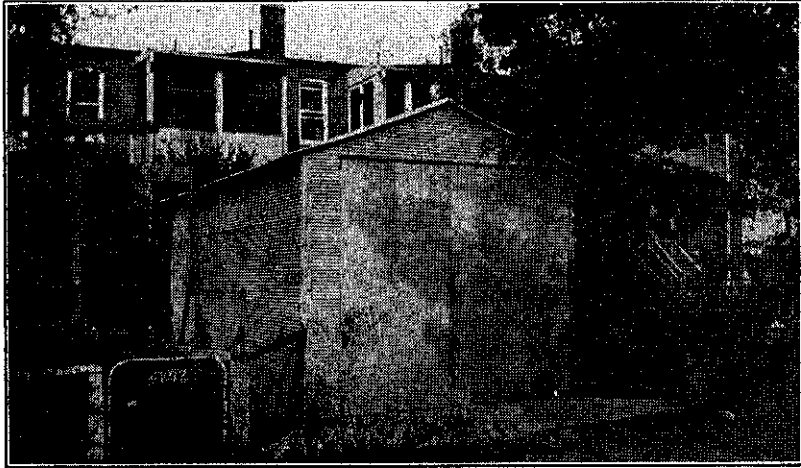
## PROF. CHAS. WOOLSEY

Teacher of { Piano Harmony  
Voice  
Violin Included

Teaching Parlors: 922 M St. N.W.

Phone North 10252

Your Patronage Invited



## G A R A G E S

Built by the P. A. ROBERTS CONSTRUCTION CO., INC.

Successors to PRESTON A. ROBERTS

Do you realize that you can have a well-built garage placed in your own back yard for only \$10.00 and pay the balance in installments as low as \$10.00 per month?

Call at the Munsey Building or Phone Main Seventeen Seventy-six

"A Revolution in Garage Building"

Remember the name—ROBERTS



STOP

STOP that cold  
with

*Jingle's*

**LAXO ASPIRIN**

*Sold Everywhere in the "Three Point Box"*

# The New Ebbitt Cafe

F at Fourteenth

You can depend upon the New Ebbitt Cafe whether you come for Dinner or a light Supper after the theatre. Unexcelled cuisine, prompt service and moderate prices prevail here—always.

**RADIO PROGRAM**  
**MUSIC**

## EDITORS OF SCIENTIFIC PUBLICA- TIONS

Many of them have found that the half-tone plates produced by us are technically perfect.

**Maurice Joyce  
Engraving Co.**

H. C. C. STILES, Gen'l Mgr.  
Evening Star Bldg. Washington

OFFICE  
STATIONERY  
WELL  
PRINTED

WASHINGTON  
PRINTING CO.  
730 13th St.  
Phone Main 783

New Colonial Pump  
—Second Floor

**LANSBURGH & BROTHER**

LOU LOCKETT & PEGGY HOPE  
in  
"Say It While Dancing"

PATHE NEWS PICTORIAL  
Exit March—"Sophie" ..... Silver

Fashion Says it Many Ways  
—And Always DIFFERENTLY at  
HAHN'S "City Club Shop," 1318 G St.



Always  
Fun, Song,  
Dance  
and  
Diversion  
at  
**KEITH'S**

## DISTRICT

NATIONAL BANK  
(2 Doors East of the Theatre)

If you are a depositor of the District National Bank everything pertaining to your business interests us. With our extensive and efficient organization we are able to supply a service which is characterized by promptness and helpful cooperation.

3% INTEREST PAID ON  
SAVINGS ACCOUNTS  
SAFE DEPOSIT BOXES  
\$3.00 to \$25.00 per annum



See Us NOW  
regarding  
PERSONAL  
CHRISTMAS CARDS  
Many exclu-  
sive designs

**Andrew's PAPER**  
COMPANY  
727-731 Thirteenth Street  
Between G and H  
FRANKLIN 6060

Paint Your Own Car  
One Day and Drive It  
the Next With  
**KWICKWORK  
AUTOMOBILE ENAMEL**

**E. J. Murphy Co.**  
Paints, Oils, Glass  
710 Twelfth St. N. W.  
Main 5280  
Thrift Club Checks Issued

**MERCHANTS' TRANSFER  
AND STORAGE CO.**  
Storage, Packing, Shipping  
ESTIMATES FURNISHED  
Phone Main 6900 920-922 E St. N. W.

# CORBY'S

# KRUSHED-WHEAT

TRADE MARK

# LOAF

You'll enjoy every slice of this  
"whole wheat Bread" made by  
the Corby scientific process—in  
which the utmost nourishment is  
developed. It's mildly laxative,  
too.

At all grocers and delicatessen

Guaranteed by

*The Corby Baking Company*

# BUSH CONSERVATORY ORCHESTRAL SCHOOL

## Symphony Orchestra

RICHARD CZERWONKY  
*Conductor*

204-897

### SOLOISTS

(Artist students of Bush Conservatory)

EDITH KENDALL	-	-	-	Violinist
ROBERT SANDERS	-	-	-	Pianist
FLORENCE NEWMAN	-	-	-	Soprano
BERNARD SCHWEITZER	-	-	-	Tenor



SEASON 1923-24

### *Second Concert*

Tuesday Evening, February 5th

At 8:15 P. M.

ORCHESTRA HALL

**THIS CONCERT IS BROADCASTED BY RADIO**  
*Westinghouse Station KYW, Chicago*  
*Wave Length, 536; Hour, 8:15 P. M. Central Time*



## BUSH CONSERVATORY ORCHESTRAL SCHOOL

The Orchestral School has been established for the purpose of training musicians in symphony orchestra routine repertoire and public performance so that they are fitted to secure engagements in standard symphony orchestras. No tuition is charged for this orchestral training.

President Kenneth M. Bradley and the management make grateful acknowledgment to the following box-holders and patrons, contributors, and season subscribers for their interest and support in the heavy expense of the public concerts and maintenance of the Orchestral School.

### BOX-HOLDERS AND PATRONS

Mrs. Mae Graves Atkins  
Mr. and Mrs. Edward Scott Beck  
Mrs. Emmons Blaine  
Mrs. Anna D. Bradley  
Mr. and Mrs. Edgar A. Brazelton  
Mr. and Mrs. Charles W. Clark  
Mrs. J. R. Custer  
Mr. and Mrs. Richard Czerwonky  
Mr. and Mrs. Eli Daiches  
Mayor and Mrs. William E. Dever  
Mr. and Mrs. Livingston Fairbanks  
Mme. Julie Rive-King  
Mr. and Mrs. James Hamilton Lewis  
Mr. and Mrs. John T. McCutcheon  
Mr. and Mrs. Herbert Miller  
Miss Marta Milinowski  
Mr. and Mrs. S. E. Moist

Mr. and Mrs. Edgar A. Nelson  
M. and Mme. Boza Oumiroff  
Mr. and Mrs. Charles S. Peterson  
Mr. George F. Porter  
Mr. and Mrs. Chauncey McCormick  
Mr. and Mrs. L. Hamilton  
McCormick  
Miss Muriel McCormick  
Miss Mary McDowell  
Mr. and Mrs. John C. Shaffer  
Consul J. F. Smetanka  
Mr. Charles H. Swift  
Mme. Emma Thursby  
Mr. and Mrs. Russell Tyson  
Former Ambassador and Mrs.  
Charles T. Vopicka

### SEASON TICKET SUBSCRIBERS

Mr. and Mrs. Benjamin F. Affleck  
Mr. Angelo Alafonzo  
Mr. J. Allmendinger  
Mrs. Charles L. Anderson  
Mr. John Baba  
Mr. William Harrison Barnes  
Mr. and Mrs. Byron Barwig  
Mrs. C. L. Bastian  
Mr. Archibald Beach  
Mr. and Mrs. Ross J. Beatty  
Dr. and Mrs. Carl Beck  
Mr. and Mrs. John Benson  
Dr. J. A. Bergen  
Dr. Marie Bergen  
Mr. John J. Blackmore  
Mrs. Walter Scott Bogle  
Miss Helen Victoria Bridgman  
Mr. and Mrs. Karl A. Butka  
Mr. and Mrs. John Charles Carroll  
Miss Madeleine Chadwick  
Mr. Jan Chiapusso  
Mr. and Mrs. George D. Clougher

Mr. and Mrs. Charles H. Cooke  
Mr. and Mrs. M. J. Cooney  
Mr. and Mrs. John McK. Critton  
Mr. and Mrs. Carleton Cummings  
Miss Alice Cunradi  
Mr. David Dangler  
Mr. and Mrs. F. Dessilla  
Miss Roxana Dessilla  
Mr. and Mrs. William W. Dickinson  
Mr. and Mrs. Theodore Ebert  
Mr. and Mrs. Theodore Ebert, Jr.  
Mrs. Carrie Ennis  
Mr. and Mrs. Jaroslov Fisher  
Mr. and Mrs. A. G. Frohmuth  
Mr. Otho S. Gaither  
Gamble Hinged Music Co.  
Mme. Nelli Gardini  
Miss Minna Geier  
Mr. Frederick L. Goff  
Mr. Maurice Goldblatt  
Mrs. Ralph S. Greenlee  
Mrs. J. Hadesman

### SEASON TICKET SUBSCRIBERS—Continued

Miss Maude Hadesman  
Miss Irene Hadesman  
Mr. Max Hagen  
Mrs. E. H. Haines  
Mr. Lorentz Hansen  
Mr. Edwin L. Harding  
Mr. Marion T. Harding  
Miss Beatrice Harding  
Miss Ferne Hassell  
Miss Florence Healy  
Mr. Walter Heighton  
Mrs. Lightner Henderson  
Mrs. John Hetzel  
Miss Beattie Hinton  
Dr. Carl M. Holland  
Mr. Keith Holton  
Mr. and Mrs. Edward O. Horne  
Mr. Edward J. Hoyer  
Mr. and Mrs. Paul Hultman  
Miss Mary D. Hussey  
Rev. and Mrs. Orlando Ingvolstadt  
Mr. and Mrs. C. A. Jennings  
Mr. and Mrs. Axel H. Johnson  
Mr. and Mrs. O. B. Johnson  
Mrs. Robert Johnston  
Mrs. Muriel Johnstone  
Mr. Otto Jourdan  
Mr. and Mrs. Paul Karstrom  
Mrs. Henry Klaas  
Mrs. Lillie Kohlhamer  
Miss Melita Krieg  
Kuerten and Steen  
Mr. Ralph L. Lapham  
Mr. and Mrs. Hubert Lane  
Mr. Ralph Leo  
Mr. and Mrs. Rowland Leach  
Mrs. Edward A. Leight  
Miss Marion Levin  
William Lewis and Son  
Mrs. Ben Lowenmeyer  
Mr. William R. Ludwig  
Mr. Lester Luther  
Miss Marion Lychenheim  
Mrs. C. O. Malmberg  
Miss Elvira Malmberg  
Miss Violet Malmberg  
Mr. and Mrs. Barney Marks  
Mrs. T. de Mars  
Mr. Alexander H. Marshall  
Mr. James Boyce McEldowney  
Mr. and Mrs. John P. McKinley  
Miss Hallie McPherson  
Mr. Gerhardt F. Meyne  
Mr. John Michalek  
Mrs. Wilhelm Middleschulte  
Mr. and Mrs. W. S. Miller  
Mr. Francis Moore  
Mrs. Charles Hosmer Morse  
Miss Kathleen Morris  
Mrs. Lucia Murphy  
Mr. and Mrs. Frank P. Neal  
Mr. C. T. Neiglick

Mr. and Mrs. H. William Nordin  
Mr. and Mrs. R. A. Nordin  
Mr. John Novak  
Mr. Frank R. Nuttall  
Dr. V. J. Nylander  
Mme. Emmy Ohl  
Mrs. John W. O'Leary  
Miss Donia Oumiroff  
Miss Jessem Page  
Mrs. Charles Peters  
Mrs. Jennie Ekblom Peterson  
Dr. A. Petracogianis  
Miss Eleanor Plesse  
Miss Irma Poindexter  
Mr. Albin Polasek  
Miss Harriet Theo Prutsman  
Dr. Maurice V. H. Puckey  
Mr. and Mrs. Walter J. Raymer  
Mr. and Mrs. W. M. Reay  
Mr. Albert W. Riley  
Mrs. Clara F. Rogers  
Mrs. E. A. Russell  
Mrs. H. P. Russer  
Miss Dorothy Russer  
Mr. George J. Schantz  
Mrs. Adolph Schmidt  
Mr. E. H. Schwenker  
Mr. Joseph Schwickerath  
Mrs. Katherine B. Schwin  
Mr. Newell T. Schwin  
Mr. Charles H. Scribner  
Mr. and Mrs. J. Sellner  
Miss Emma Sellner  
Mr. S. J. Seybold  
Mr. and Mrs. B. Shapiro  
Miss Eva J. Shapiro  
Miss Grace Shay  
Mr. and Mrs. H. H. Sheriff  
Miss Helen E. Smith  
Mrs. H. T. Smith  
Mr. Robert Yale Smith  
Miss Rose Smetanka  
Mr. John F. Smulski  
Mrs. A. B. Spach  
Miss Ebba Sundstrom  
Mr. and Mrs. John Suster  
Miss Lillian Sutherland  
Mrs. Lorado Taft  
Mrs. Wilhelmina Tewes  
Three Arts Club  
Mr. Anton Tomaras  
Miss Eloise R. Tremain  
Mr. and Mrs. Joseph Triner  
Mrs. Catherine Triner  
Mr. Francis Turzicky  
Mrs. Gertrude J. Vinton  
Miss Lyravine Votaw  
Miss Grace Walter  
Mme. Justine Wegener  
Mr. William Weil  
Mr. Leo Weissenborn

SEASON TICKET SUBSCRIBERS—Continued

Mrs. Clara L. Whedon  
Mrs. Grace M. Wheeler  
Mrs. C. L. Whiting  
Mrs. W. A. Wieboldt

Mr. and Mrs. A. L. Wilcoxson  
Miss Jessie A. Willy  
Mrs. Margaret Willy  
Mr. and Mrs. W. W. Ziege

CONTRIBUTORS

Moist Piano Co.  
Lyon and Healy  
Thomas Bowers Adv. Agency  
Henry F. Miller and Sons Co. of  
Boston  
M. Steinert and Sons, Boston  
Cable Piano Co.  
A. B. Chase Piano Co., Inc.

Rudolph Wurlitzer Co.  
Bauer Piano Co.  
Bush and Gerts Piano Co.  
Hornsteiner Violin Shop  
Musical Observer  
Musical Courier  
Musical Leader  
Baldwin Piano Co.

\* \* \*

Excerpts from Press Comment

Bush Conservatory Symphony Orchestra Concert,  
December 4th

The Bush Conservatory Symphony Orchestra gave its first concert of the season last Tuesday before an audience that practically filled Orchestra Hall and one whose enthusiasm keyed orchestra and soloists to a point that made them accomplish effects neither expected nor hoped for from young students. Mr. Czerwonky has made a remarkable success of this body of clever young men and women.—*Musical Leader, Chicago.*

The string section had a freshened life, a virile smoothness and elasticity most admirable. In sundry cantabile passages the melody sang itself with an enviable warmth and suavity that made for engaging charm.—*Musical News, Chicago.*

Another group of young musicians had their chance to win applause at Orchestra Hall last night and won it, when the Bush Conservatory Symphony Orchestra gave a concert under the baton of Richard Czerwonky.—*Chicago Tribune.*

The inclemency of the weather did not keep away the big army of admirers and supporters of the Bush Conservatory nor the patrons who heard the concerts given under the same auspices last year. . . . It seems remarkable that a school orchestra can be as fine as the one trained at Bush Conservatory. A school orchestra, such as the one encountered on this occasion is not only a great asset to the school but to the community as well.—*Musical Courier, New York.*

PROGRAM

Symphony No. 5 E minor . . . . . Tchaikowsky  
Andante-Allegro con anima  
Andante cantabile con alcuna licenza  
(In memory of Gustaf Holmquist)  
Valse-Allegro moderato  
Finale-Andante maestoso-Allegro vivace

Violin Concerto D minor . . . . . Wieniawski  
Romance  
Alla Zingara-Allegro moderato  
**Edith Kendall**

INTERMISSION

Piano Concerto C minor, op. 44 . . . . . Saint-Saens  
Allegro vivace-Andante-Allegro  
**Robert Sanders**

Duet for Soprano and Tenor  
"Speak to Me" (from "Carmen") . . . . . Bizet  
**Florence Newman and Bernard Schweitzer**

Waltz—Roses of the South . . . . . Strauss

Steinert Piano Used  
Furnished by the Moist Piano Co.

The soloists on this program are artist students of Bush Conservatory or members of the Classes of the Master School of Bush Conservatory, Charles S. Peterson, Patron.

The last two concerts of the season, on April 8th and May 20th, will be broadcasted by Westinghouse Station KYW, Chicago, Wave length 536, at 8:15 P. M. Central Time.

**MEMBERS**  
of the  
**BUSH CONSERVATORY**  
**ORCHESTRAL SCHOOL SYMPHONY ORCHESTRA**

Richard Czerwonky, Conductor

**First Violin**

Ebba Sundstrom, Concertmeister  
Lorentz Hansen  
Ebba Frederickson  
Agnes Knoflickova  
Leon Lustig  
Elmer Slama  
Willard Groom  
Zdenko Bondy  
Paul Sawatzki  
Arthur Ahlman

**Second Violin**

Paul Stoes, Principal  
Edwin Schultz  
Ferne Hassell  
Elizabeth Havlick  
Walter Worones  
Walter Hranichny  
Frances Smith  
Estelle Cover  
Dorothy Rivenburg  
Lois Arendt

**Viola**

Olga Eitner, Principal  
Robert Quick  
Fred Rittner  
Nicholas Franzen  
Charles Huslik  
Joseph Techen

**Cello**

Ethel Murray, Principal  
Anne Slack  
Miriam Little  
Efrem Garcia  
Genevieve Brown  
Hans Baldauf  
John Weatherholt

**Double Bass**

J. Churain, Principal  
Fred Heisig  
I. Bazur  
G. Wolff

**Flute**

Adeline Schmidt  
M. C. Reiss

**Piccolo**

Jeff Snouffer

**Oboe**

Florentine Acosta  
Paul Mohles

**Clarinet**

Elmo Roesler  
Lillian Poenisch

**Bassoon**

A. H. Beilfuss  
A. Wenzel

**French Horn**

John Wenzel  
Jack Bruno  
Jos. Kalabza  
Frank Chapek

**Trombone**

E. Poalucci  
Frank Forte  
Gerrie Vogt

**Trumpet**

M. Edelman  
Fred A. Hupe

**Tympani**

M. Simons

**Snare Drum**

Frank Kutyna

**Percussion**

Harold Triggs  
Alfred Frankenstein

**Harp**

Theo Aldrich

**PRIZE CONTEST**

Through the generosity of three well-known Chicago music firms, the Moist Piano Company, Lyon and Healy and the Hornsteiner Violin Shop, the Bush Conservatory announces four prizes to be competed for by students of the Conservatory during the current year.

**PIANO PRIZE**

A. B. Chase Grand Piano  
Value \$1,650  
Donated by the Moist Piano Co.

**VOCAL PRIZE**

Henry F. Miller Grand Piano  
Value \$1,250  
Donated by the Moist Piano Co.

**FIRST VIOLIN PRIZE**

Fine Old Italian Violin  
Donated by Lyon and Healy

**SECOND VIOLIN PRIZE**

(For Intermediate students)  
Fine old Italian Violin  
Donated by Hornsteiner Violin Shop

These prizes will be awarded at a Public Contest to be held in Orchestra Hall, Monday, April 28, 1924, at 8:15 P. M.

The winners of the final contests in Orchestra Hall and the winner of the first violin prize will appear as SOLOISTS with the BUSH CONSERVATORY SYMPHONY ORCHESTRA, Richard Czerwonky, Conductor, in ORCHESTRA HALL, TUESDAY, MAY 20, at 8:15 P. M.

The following compositions have been selected as the basis of the competition in the various departments:

<p style="text-align: center;"><b>PIANO</b></p> <p>Concerto E flat (Emperor).....Beethoven 1st movement</p> <p style="text-align: center;"><b>VIOLIN</b> (Advanced)</p> <p>Concerto E minor.....Mendelssohn 1st movement</p> <p style="text-align: center;">(Intermediate)</p> <p>Ballade et Polonaise.....Vieuxtemps</p> <p style="text-align: center;"><b>VOCAL</b></p> <p style="text-align: center;"><i>Dramatic Soprano</i></p> <p>"Abschaulicher" (from Fidelio)...Beethoven</p> <p style="text-align: center;"><i>Coloratura Soprano</i></p> <p>Shadow Song (from Dinorah)...Meyerbeer</p>	<p style="text-align: center;"><b>VOCAL</b></p> <p style="text-align: center;"><i>Lyric Soprano</i></p> <p>"Leise, leise" (from Der Frieschutz) .....Weber</p> <p style="text-align: center;"><i>Contralto</i></p> <p>"Amour, viens aider (from Samson et Delilah) .....Saint-Saens</p> <p style="text-align: center;"><i>Tenor</i></p> <p>Walter's Prize Song (from Die Meister- singer) .....Wagner</p> <p style="text-align: center;"><i>Baritone</i></p> <p>"Fille Des Rois" (from L'Africaine)..... .....Meyerbeer</p> <p style="text-align: center;"><i>Bass</i></p> <p>Marcelle's Aria (from Les Huguenots) .....Meyerbeer</p>
---	---

All contestants must be students of Bush Conservatory at least one full academic year prior to the contest. They must also be members of the graduating Class of 1924 or members of the Master Classes of the Conservatory.

There will be three sets of judges, one for each department, each to consist of three musicians not connected with Bush Conservatory.

For full information as to the conditions of the contest, address  
H. O. Schwenker, Secretary, Bush Conservatory.

# **BUSH CONSERVATORY SUMMER SESSION**

## **THREE TERMS**

Five Weeks (Normal Course) . . . . . **June 25 to July 29**  
Six Weeks (Public School Music) . . . . . **June 25 to August 5**  
Ten Weeks (Special Courses) . . . . . **May 21 to July 29**

All Summer Courses granted full credit on requirements for  
**Teacher's Certificate—Diploma—Degrees**

---

**Brilliant Faculty of over ninety artists**

**Free and Partial Scholarships**

**Normal Courses in Piano, Voice, Violin, Expression**

**Normal Methods for Children with Demonstration Classes**  
in Piano, Violin and Expression

**Attractive Student Dormitories**

---

**Applications for Master School for 1924-25 received now**

---

For Summer Bulletin and full information, address

**H. O. SCHWENKER, Sec.**

**839 North Dearborn Street, Chicago**

# BUSH CONSERVATORY ORCHESTRAL SCHOOL

## Symphony Orchestra

RICHARD CZERWONKY  
*Conductor*

### SOLOISTS

(Artist students of Bush Conservatory)

AGNES KNOFLICKOVA - - - Violinist  
MADGE GEISS - - - Pianist  
JOSEPHINE DECKER - - - Contralto



---

*SEASON 1923-24*

---

*Third Concert*

**Tuesday Evening, April 8th**

At 8:15 P. M.

**ORCHESTRA HALL**

## BUSH CONSERVATORY ORCHESTRAL SCHOOL

The Orchestral School has been established for the purpose of training musicians in symphony orchestra routine repertoire and public performance so that they are fitted to secure engagements in standard symphony orchestras. No tuition is charged for this orchestral training.

President Kenneth M. Bradley and the management make grateful acknowledgment to the following box-holders and patrons, contributors, and season subscribers for their interest and support in the heavy expense of the public concerts and maintenance of the Orchestral School.

### BOX-HOLDERS AND PATRONS

Mrs. Mae Graves Atkins  
Mr. and Mrs. Edward Scott Beck  
Mrs. Emmons Blaine  
Mrs. Anna D. Bradley  
Mr. and Mrs. Edgar A. Brazelton  
Mr. and Mrs. Charles W. Clark  
Mrs. J. R. Custer  
Mr. and Mrs. Richard Czerwonky  
Mr. and Mrs. Eli Daiches  
Mayor and Mrs. William E. Dever  
Mr. and Mrs. Livingston Fairbanks  
Mme. Julie Rive-King  
Mr. and Mrs. James Hamilton Lewis  
Mr. and Mrs. John T. McCutcheon  
Mr. and Mrs. Herbert Miller  
Miss Marta Milinowski  
Mr. and Mrs. S. E. Moist

Mr. and Mrs. Edgar A. Nelson  
M. and Mme. Boza Oumiroff  
Mr. and Mrs. Charles S. Peterson  
Mr. George F. Porter  
Mr. and Mrs. Chauncey McCormick  
Mr. and Mrs. L. Hamilton  
McCormick  
Miss Muriel McCormick  
Miss Mary McDowell  
Mr. and Mrs. John C. Shaffer  
Consul J. F. Smetanka  
Mr. Charles H. Swift  
Mme. Emma Thursby  
Mr. and Mrs. Russell Tyson  
Former Ambassador and Mrs.  
Charles T. Vopstka

### SEASON TICKET SUBSCRIBERS

Mr. and Mrs. Benjamin F. Affleck  
Mr. Angelo Alafonzo  
Mr. J. Allmendinger  
Mrs. Charles L. Anderson  
Mr. John Baba  
Mr. William Harrison Barnes  
Mr. and Mrs. Byron Barwig  
Mrs. C. L. Bastian  
Mr. Archibald Beach  
Mr. and Mrs. Ross J. Beatty  
Dr. and Mrs. Carl Beck  
Mr. and Mrs. John Benson  
Dr. J. A. Bergen  
Dr. Marie Bergen  
Mr. John J. Blackmore  
Mrs. Walter Scott Bogle  
Miss Helen Victoria Bridgman  
Mr. and Mrs. Karl A. Butka  
Mr. and Mrs. John Charles Carroll  
Miss Madeleine Chadwick  
Mr. Jan Chiapusso  
Mr. and Mrs. George D. Clougher

Mr. and Mrs. Charles H. Cooke  
Mr. and Mrs. M. J. Cooney  
Mr. and Mrs. John McK. Critton  
Mr. and Mrs. Carleton Cummings  
Miss Alice Cunradi  
Mr. David Dangler  
Mr. and Mrs. F. Dessilla  
Miss Roxana Dessilla  
Mr. and Mrs. William W. Dickinson  
Mr. and Mrs. Theodore Ebert  
Mr. and Mrs. Theodore Ebert, Jr.  
Mrs. Carrie Ennis  
Mr. and Mrs. Jaroslov Fisher  
Mr. and Mrs. A. G. Frohmuth  
Mr. Otho S. Gaither  
Gamble Hinged Music Co.  
Mme. Nelli Gardini  
Miss Minna Geier  
Mr. Frederick L. Goff  
Mr. Maurice Goldblatt  
Mrs. Ralph S. Greenlee  
Mrs. J. Hadesman

### SEASON TICKET SUBSCRIBERS—Continued

Miss Maude Hadesman  
Miss Irene Hadesman  
Mr. Max Hagen  
Mrs. E. H. Haines  
Mr. Lorentz Hansen  
Mr. Edwin L. Harding  
Mr. Marion T. Harding  
Miss Beatrice Harding  
Miss Ferne Hassell  
Miss Florence Healy  
Mr. Walter Heighton  
Mrs. Lightner Henderson  
Mrs. John Hetzel  
Miss Beattie Hinton  
Dr. Carl M. Holland  
Mr. Keith Holton  
Mr. and Mrs. Edward O. Horne  
Mr. Edward J. Hoyer  
Mr. and Mrs. Paul Hultman  
Miss Mary D. Hussey  
Rev. and Mrs. Orlando Ingvolstadt  
Mr. and Mrs. C. A. Jennings  
Mr. and Mrs. Axel H. Johnson  
Mr. and Mrs. O. B. Johnson  
Mrs. Robert Johnston  
Mrs. Muriel Johnstone  
Mr. Otto Jourdan  
Mr. and Mrs. Paul Karstrom  
Mrs. Henry Klass  
Mrs. Lillie Kohlhamer  
Miss Melita Krieg  
Kuersten and Steen  
Mr. Ralph L. Lapham  
Mr. and Mrs. Hubert Lane  
Mr. Ralph Leo  
Mr. and Mrs. Rowland Leach  
Mrs. Edward A. Leight  
Miss Marion Levin  
William Lewis and Son  
Mrs. Ben Lowenmeyer  
Mr. William R. Ludwig  
Mr. Lester Luther  
Miss Marion Lychenheim  
Mrs. C. O. Malmberg  
Miss Elvira Malmberg  
Miss Violet Malmberg  
Mr. and Mrs. Barney Marks  
Mrs. T. de Mars  
Mr. Alexander H. Marshall  
Mr. James Boyce McEldowney  
Mr. and Mrs. John P. McKinley  
Miss Hallie McPherson  
Mr. Gerhardt F. Meyne  
Mr. John Michalek  
Mrs. Wilhelm Middleschulte  
Mr. and Mrs. W. S. Miller  
Mr. Francis Moore  
Mrs. Charles Hosmer Morse  
Miss Kathleen Morris  
Mrs. Lucia Murphy  
Mr. and Mrs. Frank P. Neal  
Mr. C. T. Neiglick

Mr. and Mrs. H. William Nordin  
Mr. and Mrs. R. A. Nordin  
Mr. John Novak  
Mr. Frank R. Nuttall  
Dr. V. J. Nylander  
Mme. Emmy Ohl  
Mrs. John W. O'Leary  
Miss Donia Oumiroff  
Miss Jessemin Page  
Mrs. Charles Peters  
Mrs. Jennie Ekblom Peterson  
Dr. A. Petracogianis  
Miss Eleanor Plesse  
Miss Irma Poindexter  
Mr. Albin Polasek  
Miss Harriet Theo Pruteman  
Dr. Maurice V. H. Puckey  
Mr. and Mrs. Walter J. Raymer  
Mr. and Mrs. W. M. Reay  
Mr. Albert W. Riley  
Mrs. Clara F. Rogers  
Mrs. E. A. Russell  
Mrs. H. P. Russer  
Miss Dorothy Russer  
Mr. George J. Schantz  
Mrs. Adolph Schmidt  
Mr. E. H. Schwenker  
Mr. Joseph Schwickerath  
Mrs. Katherine B. Schwin  
Mr. Newell T. Schwin  
Mr. Charles H. Scribner  
Mr. and Mrs. J. Sellner  
Miss Emma Sellner  
Mr. S. J. Seybold  
Mr. and Mrs. B. Shapiro  
Miss Eva J. Shapiro  
Miss Grace Shay  
Mr. and Mrs. H. H. Sheriff  
Miss Helen E. Smith  
Mrs. H. T. Smith  
Mr. Robert Yale Smith  
Miss Rose Smetanka  
Mr. John F. Smulski  
Mrs. A. B. Spach  
Miss Ebba Sundstrom  
Mr. and Mrs. John Suster  
Miss Lillian Sutherland  
Mrs. Lorado Taft  
Mrs. Wilhelmina Tewes  
Three Arts Club  
Mr. Anton Tomaras  
Miss Eloise R. Tremain  
Mr. and Mrs. Joseph Triner  
Mrs. Catherine Triner  
Mr. Francis Turzicky  
Mrs. Gertrude J. Vinton  
Miss Lyravine Votaw  
Miss Grace Walter  
Mme. Justine Wegener  
Mr. William Weil  
Mr. Leo Weissenborn

SEASON TICKET SUBSCRIBERS—Continued

Mrs. Clara L. Whedon  
Mrs. Grace M. Wheeler  
Mrs. C. L. Whiting  
Mrs. W. A. Wieboldt

Mr. and Mrs. A. L. Wilcoxson  
Miss Jessie A. Willy  
Mrs. Margaret Willy  
Mr. and Mrs. W. W. Ziege

CONTRIBUTORS

Moist Piano Co.  
Lyon and Healy  
Thomas Bowers Adv. Agency  
Henry F. Miller and Sons Co. of  
Boston  
M. Steinert and Sons, Boston  
Cable Piano Co.  
A. B. Chase Piano Co., Inc.

Rudolph Wurlitzer Co.  
Bauer Piano Co.  
Bush and Gerts Piano Co.  
Hornsteiner Violin Shop  
Musical Observer  
Musical Courier  
Musical Leader  
Baldwin Piano Co.

---

PRIZE CONTEST

ORCHESTRA HALL

Tuesday, April 29 at 8:15 P. M.

Open to students of Class of 1924 or Master School students of  
Bush Conservatory

PIANO PRIZE

A. B. Chase Grand Piano  
Value \$1,650  
Donated by the Moist Piano Co.

VOCAL PRIZE

Henry F. Miller Grand Piano  
Value \$1,250  
Donated by the Moist Piano Co.

FIRST VIOLIN PRIZE

Fine Old Italian Violin  
Donated by Lyon and Healy

SECOND VIOLIN PRIZE

(For Intermediate students)  
Fine old Italian Violin  
Donated by Hornsteiner Violin Shop

---

The winners of the piano and vocal prizes  
and the first violin prize will appear as SOLO-  
ISTS with the BUSH CONSERVATORY  
SYMPHONY ORCHESTRA, Richard Czer-  
wonky, Conductor, in ORCHESTRA HALL,  
TUESDAY, May 20 at 8:15 P. M.

PROGRAM

Overture to William Tell..... *Rossini*

Concerto for Violin, E major..... *Vieuxtemps*  
Allegro moderato

Agnes Knoflickova

Two Modern Sketches..... *Czerwonky*  
(a) Pourquoi (b) Harlequin

A Carnival of Life..... *Czerwonky*

INTERMISSION

Concerto for Piano, E flat major..... *Liszt*  
Madge Geiss

Aria—"O Don Fatale" (from "Don Carlos")..... *Verdi*  
Josephine Decker

Les Preludes..... *Liszt*

A. B. Chase Piano Used  
Courtesy Moist Piano Company

---

The soloists on this program are ARTIST STUDENTS of Bush Conservatory  
or members of the MASTER SCHOOL of Bush Conservatory, Charles S.  
Peterson, Patron.

---

The Last Concert of the Season Takes Place  
Tuesday Evening, May 20 at 8:15 P. M.

**MEMBERS**  
of the  
**BUSH CONSERVATORY**  
**ORCHESTRAL SCHOOL SYMPHONY ORCHESTRA**

Richard Czerwonky, Conductor

**First Violin**

Ebba Sundstrom, Concertmeister  
Lorentz Hansen  
Edith Kendal  
Margaret Conrad  
Leon Lustig  
Elmer Slama  
Willard Groom  
Richard Rencenberger  
Arthur Ahlman  
Paul Sawatzki

**Second Violin**

Paul Stoes, Principal  
Edwin Schultz  
Ferne Hassell  
Elizabeth Havlik  
Walter Worones  
Frank Kutyna  
Frances Smith  
Estelle Cover  
Lois Arendt  
Dorothy Rivenburg

**Viola**

Olga Eitner, Principal  
Robert Quick  
Nicholas Franzen  
Charles Huslik  
Fred Rittner  
Joseph Techen

**Cello**

Ethel Murray, Principal  
Anne Slack  
Miriam Little  
Genevieve Brown  
John Weatherholt  
Hans Baldauf

**Double Bass**

J. Churain, Principal  
Fred Heisig  
I. Bazur  
G. Wolff

**Piccolo**

M. C. Reiss

**Flute**

Adeline Schmidt  
Joseph Schotta  
M. C. Reiss

**Oboe**

Florentine Acosta  
Paul Mohles

**English Horn**

Florentine Acosta

**Clarinet**

Elmo Roesler  
Lillian Poenisch

**Bass Clarinet**

Alfred Frankenstein

**Bassoon**

A. H. Beilfuss  
A. Wenzel

**French Horn**

Jack Bruno  
C. Beyer  
Jos. Kalabza  
Frank Chapek

**Trombone**

E. Poalucci  
Frank Forte  
Gerrie Vogt

**Trumpet**

Fred A. Hupe  
A. F. Ziehm

**Tympani**

M. Simons

**Percussion**

Robert Sanders  
Alfred Frankenstein  
Lionel Sayers

**Harp**

Marie Auer

**The Faculty of**  
**Bush Conservatory**

**KENNETH M. BRADLEY, President.**  
**EDGAR A. NELSON, Vice-President.**

**EDWARD H. SCHWENKER, Secretary.**  
**WILLIAM L. BUSH, Treasurer.**

**PIANO**—Jan Chiapusso, Edgar A. Nelson, Mme. Julie Rive-King, Mme. Ella Spravka, Edgar A. Brazelton, John J. Blackmore, Robert Yale Smith, Elsie Alexander, Carl Hultman, Grace Walter, Ethel Lathrop Marley, Eva J. Shapiro, Harry W. Carlson, Adolph Ruzicka, Grace Shay, Jessie Willy, Keith Holton, Valerie Bondurant, Eleanor Busnell, Fyrne Bogle, Melita Krieg, Madeleine Chadwick, Kathleen Morris, Beattie Hinton, Leotta F. Rawson, Harriet Prutsman, Harold Triggs, Helen Victoria Bridgman, Beattie Hinton, Alan Irwin, Jessemin Page, Grace Levinson, Emily Winning.

**VOICE**—Arthur Middleton, Charles W. Clark, Vittorio Trevisan, Boza Oumiroff, Mae Graves Atkins, Herbert Miller, Mme. Nelli Gardini, Louis Kreidler, Emerson Abernethy, Mme. Justine Wegener, William Nordin, Mme. Emmy Ohl, Ralph Leo, Glen Drake, Lyravine Votaw, Maude Bouslough, Charlotte Van Wickle, Jennie Ekblom Peterson, Helen E. Smith, Helen V. Bridgman, Carleton Cummings.

**VIOLIN**—Richard Czerwonky, Bruno Esbjorn, Rowland Leach, Ebba Sundstrom, Lorentz Hansen, Marion Levin, Paul Stoes, Ferne Hassell.

**CELLO**—Bruno Steindel, Walter Brauer.

**ORGAN**—Edgar Nelson, Florence Hodge, Harry Carlson, Robert Yale Smith, Jessie Willy, Keith Holton, Margaret Flier.

**ORATORIO**—Arthur Middleton, Charles W. Clark, Edgar A. Nelson.

**OPERA**—Vittorio Trevisan, Mme. Nelli Gardini.

**ORCHESTRA**—Richard Czerwonky, Ebba Sundstrom.

**ORCHESTRAL INSTRUMENTS**—Arthur Kitti, Josef Kelter, Phillip Huoy, Elmo Roesler, Florentine Acosta.

**HARMONY, COUNTERPOINT AND COMPOSITION**—Kenneth M. Bradley, Edgar Brazelton, Rowland Leach, Grace Walter, Jessie Willy, Grace Shay, Lorentz Hansen, Melita Krieg, Jessemin Page, Keith Holton, Alan Irwin.

**ORCHESTRATION**—Edgar Brazelton, Rowland Leach, Grace Walter, E. P. Espenshade.

**EAR TRAINING**—William Nordin, Lyravine Votaw.

**MUSICAL APPRECIATION**—Kenneth M. Bradley, Edgar A. Brazelton, Lyravine Votaw.

**NORMAL TRAINING COURSES**—Kenneth M. Bradley, Edgar A. Brazelton, Ethel L. Marley, Eva Shapiro, Herbert Miller, Rowland Leach, Ebba Sundstrom, Mae Riley McKinley, Lester Luther, Cora Spicer Neal.

**PUBLIC SCHOOL MUSIC**—Lyravine Votaw, William Nordin, Mrs. Homer Cotton, E. P. Espenshade.

**ACCOMPANYING AND COACHING**—Edgar A. Nelson, Mme. Ella Spravka, Mme. Trevisan, Robert Yale Smith, Kathleen Morris, Harriet Prutsman, Valerie Bondurant, Fyrne Bogle.

**ENSEMBLE**—Mme. Ella Spravka, Bruno Esbjorn, Rowland Leach, Ebba Sundstrom, Marion Levin, Lorentz Hansen.

**EXPRESSION AND ACTING**—Mae Riley McKinley, Lester Luther, Lora Williams Conroy, Elma Pearl, Edna L. Fitch.

**DANCING AND PHYSICAL CULTURE**—Cora Spicer Neal, Elma Pearl.

**LANGUAGES**—Emile LeClerq, Flores Bermudez, Consiglia Bartholomel.

**HOUSE HOSTESS**—Mme. Emmy Ohl.



# BUSH CONSERVATORY SUMMER SCHOOL

June 25 to July 29

The management announces the teaching engagement for the  
Summer Session and thereafter of

**ARTHUR MIDDLETON**

America's Greatest Baritone  
Formerly with the Metropolitan Opera Co.

**VITTORIO TREVISAN**

Famous Basso of the Chicago Civic Opera

**LOUIS KREIDLER**

Distinguished Baritone, formerly with the  
Metropolitan, Chicago and Ravinia Grand Opera Companies

Each of these artists will conduct a  
**MASTER INTERPRETATION CLASS**  
and will give one  
**FREE SCHOLARSHIP**

Beginning at the opening of the Fall Term, September 8  
**EMERSON ABERNETHY, Baritone**  
and  
**ELSIE ALEXANDER, Pianist**

---

For Summer School Announcement, containing full information about  
scholarships, Normal Courses, Student Dormitories, etc., address

H. O. SCHWENKER, Secretary  
839 North Dearborn Street, Chicago

---

**APPLICATIONS FOR MASTER SCHOOL (TUITION FREE) for 1924-25**  
received NOW

---

---

# PARKING SPACE

INDIAN PEACE TREATY  
❖ PAGEANT ❖

Stall No. \_\_\_\_\_



# A

---

---

FIRST DAY

*Souvenir Programme*



**Medicine Lodge Peace Treaty**

An Historical Pageant written and directed by  
Franklin E. Gilson. Produced by the people  
of Medicine Lodge, Kansas.

Presented October 5, 6, 7, 1932.

*Price Fifteen Cents*

# THE PAGEANT

Committee Chairman .....Miss Rachel Nixon

## Prologue and Interludes

Written by .....Miss Rachel Nixon

Spoken by .....Riley W. MacGregor

Conductor of Orchestra and Band .....M. O. Wright

### ORCHESTRA

Leona Woodward  
Frances Martin  
Jewel Strickland  
Mildred Wright  
Louise Hall  
Mildred Horney  
Alice Strong  
Wenonah Angell  
Nettie Lytle  
Ruth Meixner  
Junior Bauman  
Georgia Kimball  
Pauline Harbaugh  
Ruth Harbaugh  
Virginia Nurse  
Thelma Nurse  
Agnes Nurse  
Donald Parr  
Robert Lake  
Helen Hibbard  
Clifford Kimball  
Arthur Edgerton  
Virginia Trice  
Viola Rodgers  
Barbara Osborne  
Della McCracken  
Lester Porter  
Eugene Hart  
Ellis Thomas  
Marion Smith  
Bill Lusk  
Ketron Byerley  
Jessie Donovan

### BAND

Henry Rankin  
Robert Lake  
Lawrence Stevens  
W. F. Knight  
Helen Hibbard  
Clifford Kimball  
Ruth Ellen Serrot  
Floyd Utz  
Charles Hall  
Junior Fowler  
Harry Dawson  
C. C. Painter  
Wade Hampton  
R. Belisle  
Leona Woodward  
Viola Rodgers  
Barbara Osborne  
Wilbur Pro  
Jack Trice  
Vivian Meckel  
Betty Hinshaw  
Gillas Woodward  
Merlin Parker  
Vernon Meckel  
Lester Porter  
Lucille Angell  
Della McCracken  
Virginia Trice  
Arthur Edgerton  
Agnes Nurse  
Ira Nixon  
Gordon Russell  
Bill Lusk  
Fred Smith  
Eugene Hart  
Chester Powell  
Lester Orr  
Ellis Thomas  
Richard Turnbull  
Dale Clark  
Burns Simpson  
Gerald Forsythe  
Jack Guenther  
Nelson Turnbull  
Frank Marsh  
Clarke McIlree  
Alice Moomau  
Marion Smith  
Charles Forsythe  
Max Hamilton  
Donald Parr  
Thelma Nurse  
Jessie Donovan  
Franklin Warren  
Ketron Byerley  
Billy Barnard

# INTRODUCTION

Fanfare of Trumpets .....Trumpeters, Troop A. 2nd U. S. Cavalry

## PROLOGUE

The curtains of the past are drawn;  
Before our eyes unrolls the scroll of years!  
Adown the long dim aisles of time we see  
Envisaged here the days of yore,  
The days of Kansas History.

Behold! the Virgin prairie spreads afar,  
Flings forth her grassy carpet free,  
Star flecked with countless blossoms fair  
She waits alone,  
For man . . . for mastery.

The tide of life is there; the bison hoar,  
The antelope gray, the herds swarm o'er the earth.  
Fair prairie sleeps; their touch moves not;  
She waits in silence; still alone!

But lo! a change! She smiles! . . .  
She stirs!  
Through all the land man's presence infiltrates;  
At morn . . . at noon,  
At dusky night, along some river bank  
Dark forms are gathered round the council fire,  
Or spend their strength in sacred dance.

Spoken by .....Riley W. MacGregor

## INTERLUDE

### SCENE I

#### A Dance Interpretation

The Spirit of the Prairie calls forth her attendant nymphs, who in turn cause the flowers to blossom and the elves to come from their hiding places.

#### CHARACTERS:—

The Spirit of the Prairie .....Audrey Powell

**Attendants:—**Mildred Strickland, Mildred Stevens, Marjorie Warren, Peggy Hamilton, Georgia Marion Luallen, Evelyn Brittain, Frances Stone, Louise McCoy, Viola Moomau, Marietta Axtell, Betty Richardson, Mildred Benefiel.

**Prairie Flowers:—**Lorene Fowler, Maxine Fussell, Dolores Soper, Virginia Montgomery, Helen Williams, Mary Rinke, Mary Louise Martin, Hazel Gilmore, Luella Nurse, Farena Warren, Bertha Mae Shotwell, Madge Holser, Maxine Mader, Maene Warren, Elizabeth Kindig, Mary Margaret Crawford, Vayla Jordan, Mary Jean Hibbard, Helen Crook, June Stone, Ava Marie Schnelle, Darlene Elliott, Pauline Lamar, Ruth Read, Geraldine Shaw, Maleta Mae Martin, Wilma Davis, Jean Eby, Jeanne Arnold, Esther Stevens, Normagene Hill, Peggy Dean Hittle, Fola Mae Melkus, Marjorie Bauman, Roberta Crawford, Anadayle Davis, Jane Nixon, Dorothy Guenther, Helen Goldsberry, Mary Jean Williams, Joan Richardson, Betty Jean Belknap, Eva Baldwin, Glenna Lee Howard, Florence Webb, Virginia Lusk, Grace Heydenreich, Dorothy Lee Chapin, Helen Earnhart, Marjorie Pro, Gwendolyn McCauley, Phyllis Richardson, Mary Agness Williams, Marjorie Holser, Georgia Ross, Maxine Brown, Mary Margaret Hart, Dorothy Groves, Betty Dean Phye, Audrey Adams, Neola Heaney, Dotty Ricke, Billie Burgess, Arlene Shotwell, Betty June Giles, Miriam Kindig, Billy Jean Bell, Lucile Heydenreich, Ruth Howard, Betty Jean Preston, Barbara Hodges, Maycel Crick, Althea Day, Patricia Tilton, Patricia Lasswell.

**Elves:—**Eual Harrow, Ned Axtell Jr., Robert Garten, Carter Best, Jimmy Giles, Jimmie Bertoglio, John Tincher, Jr., John Richardson, Clifford Forsythe, Bobby J. Kenney, Gilbert Woodward, Leland Brown, Laclede Parsons, John Ruff, Jacob Ryser, Jack Roark, Harry Martin, Gilbert Dawson, Edward Whittemore, DeWitt Stevens, Billy MacGregor, Rex Milton, Noble Soper, John Royal Schnelle, Dan Woodward, Billy Garten.

Director of the Scene .....Mrs. Lester M. Stone

### SCENE II

#### Indian Ceremonial

by

A group of Comanches and Kiowas

So life, untamed, moves on  
Until a thousand years are passed away.  
And then, caparisoned by church and battle-decked,  
The Spaniard comes from out the South.  
No threatened curse, no pang of death has served  
To check his stubborn progress.  
With cross on high, the lure of gold within his heart,  
He seeks the pillage of the plain.

But not to Spain will prairie gold be rendered,  
Both sullen earth and savage man dispute.  
Drought . . . famine . . . come to aid!  
The weary struggle proves in vain.  
Quivera's lost! . . . a phantom of the brain.

Spoken by .....Riley W. MacGregor

## EPISODE I

### The Period of Discovery

#### SCENE I

##### Coronado and His Band of Followers Explore the Southwest

In 1538 Coronado and his followers set out from Mexico traveling in a generally northern direction to explore the territory which had recently been acquired by Spain. Their immediate purpose was the finding of the Land of Gold, Quivera. They were the first white explorers in the Southwest. One of their number, Father Padilla, remained behind the group when they were exploring the country that is now included in the state of Kansas. Tradition says that he ministered to the Indians, preaching and teaching, but was finally killed by Indians and was buried near Council Grove, Kansas.

##### CHARACTERS:—

Coronado ..... Elbert S. Rule  
Guide, "The Turk" ..... John Harbaugh  
Father Padilla ..... Albert Rumsey  
Priest ..... H. B. Lawton  
Noblemen ..... Lee Chapin, G. R. Smith  
Mounted Soldiers:—R. R. McCullough, Thomas Warwick Jr., Arch Heel,  
Ray Heel, Robert Mullikin, Thos. Stranathan, U. B. Harbaugh, Pete  
Bartz, Pete Slack, Park Moomau.  
Foot Soldiers:—Charles Page, Jr., Barney Hutchinson, Jess VanErt,  
T. J. Willard.

Director of the Scene ..... Lee Chapin

#### SCENE II

##### A Spanish Dance

Margaret Dobson, Eugene Rankin, Claudine Newkirk, David Osborn,  
Mrs. M. D. Serrot, Leo Frederick.

Director of the Scene ..... Mrs. W. E. Stout

## INTERLUDE

Again the years roll on,  
The dormant prairie, prone upon the wheel of Fortune,  
Is whirled from Spain to France,  
And back again; at length becomes  
A secret part of France . . . a pawn of empire.  
Scheming but to harry England, the wily Consul,  
Knowing not true from bogus riches,  
Plays her away for meager millions,  
Allows the young Republic to espouse her,  
A boon conceded youth to thwart the aged.

And now the bold explorers  
Are sent to claim the soil for settlers brave;  
The great Northwest is opened to the plow.  
Pike, the intrepid plainsman, points the way  
From Mississippi's banks to mountain's rugged brow.  
Upon the plain unfurls the flag,  
Columbia's stars and stripes . . . a beacon bright  
To welcome man to richly dowered lands.

Spoken by ..... Riley W. MacGregor

## EPISODE II

### The Period of Exploration

In 1803 President Jefferson gave a commission to Lewis and Clark authorizing them to explore the territory newly acquired through the Louisiana Purchase. They spent most of their energy in the exploration of the Mississippi Valley and the Northwest. Another explorer, Zebulon M. Pike, explored the territory of the Southwest and the lower Rockies.

#### SCENE I

##### The Minuet

Mrs. Frank Marsh, Miss Louise Painter, Mrs. Lester Orr, Mrs. M. B. Skinner, Trice Newsom, Glenn Powell, Dwight Hinshaw, M. B. Skinner.

Director of the Scene .....Mrs. H. W. Skinner

#### SCENE II

President Jefferson and his Cabinet Present the Commission to Lewis and Clark

##### CHARACTERS:—

Lewis .....E. E. Lake  
Clark .....J. R. Hopkins  
President Jefferson .....Jefferson Long  
Albert Gallatin, Secretary of Treasury .....R. L. Groendycke  
Gen. Dearborn, Secretary of War .....Robt. Taliaferro  
Jas. Madison, Secretary of State .....A. D. Shaw  
Levi Lincoln, Attorney General .....P. H. Parr  
Attendants .....Glenn Kimball, Claire Kimball

Director of the Scene .....E. E. Lake

## SCENE III

Pike and His Companions Explore and Survey the Southwest

##### CHARACTERS:—

Col. Zebulon M. Pike .....G. E. Alexander  
Guide .....J. D. Mills  
Surveyor .....S. E. Woodward  
Chainmen .....Harold Knox, Erple Kinkaid, Gerald Woodward  
Scouts .....J. E. Woodward, C. C. Benefiel, Leonard Ott  
Soldiers:—Wallace Willms, Raymond Harris, Ralph Manly, W. A. Nixon,  
Fred Benefiel, Robt. McCauley.  
Trader and Trapper .....Aubrey Donovan

Director of the Scene .....E. E. Lake

### PATRIOTIC INTERLUDE

#### Boy Scout Bugle Corps

Ted Chapin, Billy Lalicker, Aubrey Brumley, Jas. Williams, Eldon Davis, Tom Williams, Chas. Vaughn, Harry Dawson, Harold Garten, Laurel Rickard, Wilbur Pro., Merrill Parker, Duane Meckel, Lonnie Warrington, George Cloutman, Eugene Hart, Gerald Forsythe, Sherman Burr, Walter Jones, Robert Smith, Floyd Utz, Jr., Gordon Russell, Tweed Sanders, James Woodward, Wayne Howard, Robert Lake, Vivian Meckel, Burns Simpson, Vernon Meckel, Walter Moore, Everett Smart, Forrest Wilson, Kenton Tedrow, Junior Bauman, James Durbin, Gwyn Shell, Tom Smith.

#### Flag Formation

Margaret Angell, Opal Brock, Ted Belisle, Clara Dornon, Thelma Foster, Mildred Groves, Gussie Griem, Lois Gilmore, Marie Hoyt, Mary Jane Holser, Peggy Hall, Cora Hampton, Wilma Howard, Mary Jester, Ruth Knight, Vera Lytle, Elizabeth McCracken, Jessie Murphy, Geraldine Moomau, Mary Martin, Fern Phillips, Ada Ryser, Yvonne Ryckman, Dorothy Stone, Jorie Watkins, Goldie Smith, Helen Arnold, Sarah Bayliffe, Winifred Conn, Virginia Eby, Marguerite Fishburn, Lucille Groves, Doris Griem, Irene Giggly, Louise Harbaugh, Alice May Howard, Fay Hunt, Joan Hall, Ruth Ireland, Freda Kimsey, Jane Kimsey, Uleta Lake, Nona Mae McDowell, Helen Moore, Edna Moore, Nina Noble, Doris Parr, Edith Ryser, Lucille Strong, Dena Scott, Virginia Woodward, Beulah Wells, Mary Bell, Margaret Bell, Violet Brumley, Gerry Day, Nadine Fowler, Charlotte Fussell, Verdie Groves, Florence Griem, Edna Gordon, Irene Hackney, May Horney, Dorothy Hybsha, Florence Heydenteich, Ruby Hammock, Dorothy Kimball, June Lamar, Lela Martin, Georgia Meador, Donna McKaig, Blanche McDowell, Mary Noble, Hazel Parr, Mildred Ruggles, Lucille Scotton, Effie May Shaw, Jenna Lee Watkins, Faribe Warren, Joan Scotton.

Director of the Scene .....Mrs. K. S. Simpson

## INTERLUDE

Along the path made by the sunrise,  
The prairie schooner toils its way,—  
Its cargo—men and women stout of heart.  
No weaskings they, the mettle of the sturdy pioneer  
Is firmly fixed within their fearless souls.  
They flaunt the Mayflower spirit.

The prairie now must suffer sorrow;  
For, welded to the new Republic,  
She fain would clasp its children to her heart.  
Gladly she greets the hardy yoemen,  
The vanguard of a potent people,  
For them she burgeons into blossom;  
Her fruits are theirs; she would deny them nothing.

But step by step the red man  
Defends his ancient heritage;  
In conflict grim contests the right of way.  
He makes the prairie's breast a battle ground,  
Her river veins run blood.

Spoken by .....Riley W. Macfiegore

## EPISODE III

### The Period of Settlement

Discovery of gold in California in 1849 was the cause of a great migration across the prairies of the Southwest. The immediate vicinity of Medicine Lodge, since it was somewhat distant from the Santa Fe Trail, was settled later. Before the settlers came, the buffalo hunter and the pony express were seen.

#### SCENE I

##### Outposts of Civilization

Pony Express Rider .....W. C. Aubley  
Keeper of the Station .....Guy Aubley  
Buffalo Hunter .....Howard Parker  
Buffalo Skinners .....V. E. McAdams, Robert Knight, Raymond Spencer

#### SCENE II

##### The Early Settlers

A typical evening camp of a group of early settlers. The scene shows part of a wagon train traveling westward. The action depicts the finding of a place to camp for the night, with its usual activities. The settlers unload, cook, sing, and dance, finishing with their devotions, and "The Prairie Mother."

settlers:—Mr and Mrs. Dan Axtell, Mr. and Mrs. Harvey Axtell, Mr. and Mrs. Landon Mills, Mr. and Mrs. Glenn Bloom, Mr. and Mrs. Gaines Brown, Mr. and Mrs. Chas. Bevans, Mr. and Mrs. Luke Chapin, Mr. and Mrs. John Ditgen, Mr. and Mrs. Newton Martin, Mr. and Mrs. J. T. Edwards, Mr. and Mrs. Allen Herr, Jr., Mr. and Mrs. W. H. Holmes, Mr. and Mrs. Lou Jester, Mr. and Mrs. Blaine Jones, Mr. and Mrs. Fred Moomau, Mr. and Mrs. Wm. Vanderwork, Mr. and Mrs. Willard Watkins, Mr. and Mrs. John Weidner, Mr. and Mrs. Lloyd Weidner, Mr. and Mrs. James Parr, Mr. and Mrs. Ed Schreiber, Mr. and Mrs. W. C. Schiff, Mr. and Mrs. John W. Shellenberger, Mr. and Mrs. James Yankie, Mr. and Mrs. Verl Marshall, Mr. and Mrs. Carl Barrows, Mr. and Mrs. Robert Lamkins, Mr. and Mrs. Al Hudson, Mr. and Mrs. Frank Frame, Mr. and Mrs. Dick Frazier, Mr. and Mrs. W. C. Martin, Mr. and Mrs. Harry Timmis, Mr. and Mrs. Allan Hibbard, Mr. and Mrs. Mike Farr, Mr. and Mrs. Paul Basey, Mr. and Mrs. Zig Smith, Mr. and Mrs. John Koerner, Mr. and Mrs. Peter Eck, Mr. and Mrs. Ben Ricke, Mr. and Mrs. Nicke Ricke, Mr. and Mrs. Joe Rinke, Mr. and Mrs. Dan Kidd, Mr. and Mrs. Glenn Lukens, Mr. and Mrs. H. S. White, Mr. and Mrs. Charles Griem, Mr. and Mrs. Tell Strickland, Mr. and Mrs. Ernest Tedrow, Mr. and Mrs. Howard Vanderwork, Mr. and Mrs. Troy Watkins, Georgia Harrison, Mrs. Philip Wilson, Catherine Stone, Mrs. Frank Knowles, Mrs. Luther Stafford, Mrs. S. A. Harrison, Evelyn Rankin, Mrs. C. L. Forsyth, Mrs. Samuel Griffin, Mrs. Chester Fullerton, Mrs. Lee Nurse, Freda Nurse, Percy Knight, Mrs. H. W. Skinner, J. L. Gant, Rosie Kinsey, David Kinsey, Virgil Kinsey, Ruth Kinsey, Billy Forsyth, James Gant, Howard Gant, Allen Herr, John Jackson, Robert Jackson, George Lukens, Marion Lukens, Georgia Lukens, James Lukens, John C. Richardson, George Pearce, Nellie Pearce, William Koerner, Fred Davis, Glenn Thomas, Milton Thomas, Howard Thomas, May Holster, Mrs. Leona Watts, Josephine Shaw, Carl Aubley, Nolan McAdoo, Glenn Vanderwork, Albert Heublein, Daisy Edwards, Mrs. Lee Chapin, Mrs. Carrie Shaw, Mrs. Mayme Cole-Holmes, Mrs. John Willan, George Giles, Zon Graham, Mrs. Troy Stockstill, H. A. Tedrow, Dorothy Cone, Mrs. Winnie Knox, Mrs. Arvilla Garten, Bessie Harbaugh, J. B. Harbaugh, Robert Warwick, Robert Balding, John Rahe, Charles Noell, Hugh Woodward, Paul Frederick, Mrs. Daisy Munro, Mrs. Edith Myers, Mrs. Jacob Ryser, Mrs. W. H. Hall, Mrs. Mary Luallen, Mrs. M. A. Kimball, Mrs. Thos. Stranathan, Mrs. Fred Smith, Marion Knight, Mrs. Wilbur Murray, Lloyd Davis, L. W. Fullerton, Guy Hittle, S. A. Harrison, Chas. Gordon, Millard Kimball, Clifford Kimball, Leonard Luther, Mrs. Ray Benefiel, Emmett Schiff, Kenneth Schiff, Don McGuire, Margaret Shellenberger, Pearl Shellenberger, Garland Phipps, Myrtle Stafford, Inez Martin, Ethel Nurse, Ray Weidner, Robert Weidner, Donald Weidner, Laura Herr, Alice Herr, Vivian Herr, Frances Hester, Mrs. Oma Kimsey, Mrs. Wm. Axtell, Bettie Warren, Marjorie Edwards, Orris Edwards, Mrs. S. P. Garrison, Edna Schreiber, Wm. Schreiber, Alma Schreiber, Helen Duncan, Ila Watkins, Wilbur Watkins, Odis Brown, Pauline Brown, Wanda Brown, Eudora Brown, Mr. and Mrs. Leonard Baier, Rev. A. B. Shepard.

Directors of the Scene .....Mrs. Carrie Shaw, F. J. Wadsworth



### SCENE III

#### The Attack by Indians

**Indians:**—Gwyn Adams, Beuford Duncan, Howard Gant, Sam Gibbin, Walter Jones, James Kasney, Henry Kimsey, Wallace Kirkbride, John McGuire, Kenneth McKaig, Bryan Moomau, Glenn Morris, Jack Nurse, Marvin Nurse, Robert Ruggles, Ellis Schiff, Lester Shaw, Glenn Shriver, Robert Warren, Ned Warren, Homer Watkins, John Kimsey, Gerald Berneking, Dale Insiey, William Woodward.

Director of the Scene .....E. B. Evans

#### The Rescue

Troop A, 2nd U. S. Cavalry .....Lloyd W. Biggs, Capt.  
T. D. Roberts, 1st Lieut.

### SCENE IV

#### A Group of Cowboy Songs

In the early days the cowboys sang a great deal, both for the pleasure of expressing themselves and also for the soothing effect the sound had on the cattle. The songs chosen for this scene are typical cowboy songs. "The Dying Cowboy," sung by Albert Axline, is one of the best known.

**Cowboys:**—D. S. Shaw, Albert Axline, Wm. Rankin, H. A. Palmer, Phillip Wilson, Arlo McCain, Paul Sears, Orville Kimball, Paul Kimball, Raymond Donovan, Herbert Gress, Harry Vandever, Floyd Hall, Wm. Matthews, Edwin Wright, Sam Rickard, Max Rickard, Ralph Aubley, Everett Hudson, F. A. Shouse, Melvah Lonker, Glenn Fishburn, T. A. Groendycke, Geo. Crosby, Luther Stafford, Orville Smith.

Director of the Scene .....D. S. Shaw

### SCENE V

#### The First Travelers

The first settlers were harrassed by hard times, and many obtained their livelihood by picking up buffalo bones from the prairie and selling them. The stage coach brought the first visitors to the settlers.

Stage Coach Driver .....Heil Smith  
Box Passenger .....Paul Richardson  
Inside Passengers:—Mrs. W. A. Nixon, Miss Patricia Best, Miss Camora MacGregor, Frank DeGeer.  
Buckboard Driver .....Wendel Adams  
Bone Wagon Driver .....Henry Page

Director of the Scene .....Paul Richardson

444 Do, Estelle  
Elizabeth Bowen  
INTERLUDE

They come in search of freedom,  
These pioneers of old; these sires of mighty people.  
They seek not spoil nor pelf nor empire,  
They spare not toil nor task nor travail,  
They ask but peace to build their homes.

And peace is theirs.  
The chiefs are bidden to the council fire.  
Beneath the height of green Ay-yadi-dya,  
Big timber mountain of the plain,  
The tribes are gathered to the call.  
The peace is made! The struggle's ended!  
The goodly, yielding, fruitful plain is won!

Up from her mighty bosom to the sky,  
Clarioned aloud so all the world may hear,  
Swells forth the inspiring, glad, triumphal cry,  
"Through dangers to the stars forevermore."

Spoken by .....Riley W. MacGregor

## EPISODE IV

### THE SIGNING OF THE PEACE TREATY OF MEDICINE LODGE

The signing of the peace treaty of Medicine Lodge occurred during October 1867. It was a treaty between the United States Government and five tribes of Indians, the Kiowas, the Comanches, the Apaches, the Arapahoes and the Cheyennes. The many attacks of these various tribes of Indians against travelers on the Santa Fe Trail and settlers had been annoying and dangerous. The treaty was planned to take the Indians farther south and to make them keep peace. For the most part the terms of the treaty were kept. In fact, it is said to be the only Indian treaty whose terms were ever successfully carried out. In presenting the dramatic version of the signing of the treaty the director has attempted to carry out the actual scene as nearly as possible. In many details, of course, it is impossible to present the scene as it was. The actual signing of the treaty covered more than a week. Many details, of course will be lacking, but in all fundamentals and essentials the scene is a true representation.

#### CHARACTERS:—

##### U. S. COMMISSIONERS

Hon. N. G. Taylor, Com. Indian Affairs ..... Albert L. Orr  
Gen. W. S. Harney, U. S. Army ..... Marvin Williams  
Gen. H. H. Terry, U. S. Army ..... J. Lester Orr  
Gen. C. C. Augur, U. S. Army ..... Wm. Palmer  
Gen. J. B. Sanborn, U. S. Army ..... C. L. Forsyth  
Senator J. B. Henderson ..... Ralph Sheldon  
Col. S. F. Tappan (Citizen) ..... Ted Kenney

##### STATE

Gov. Samuel J. Crawford ..... Ned Axtell  
Hon. E. G. Ross ..... Roy Crawford  
Dr. J. P. Root ..... W. L. Bragg  
Col. J. K. Rankin ..... W. R. Forsyth  
Henry M. Stanley (N. Y. Tribune) ..... Ray Ives  
Phillip McKusker (Interpreter) ..... O. Meckel  
Ten Bears ..... Dr. Hardin Gilbert  
Wagon Master ..... Jas. Clark  
Wagoners:—Richard Belisle, Geo. Turnbull, Homer Hartzell, Riley Hartzell.

Indians of the Five Tribes, including descendants of the original signers. Little Raven, son of Little Raven; Amick Tallbear, grandson of Tallbear; Wm. Mecks, grandson of Spotted Wolf; Jas. R. Hutchinson, son of Young Colt; Edna Lumpmouth, granddaughter of Interpreter; Crooked Star, granddaughter of Yellow Bear; Francis Charcoal, grandson of Bird Chief; Eva Rodgers, daughter of Big Mouth; Robert Sankey, grandson of White Rabbit; Frank and Muskogee Given, son and granddaughter of Sitting Bear; Ahtone ah, daughter of White Bear; Tahdo, niece of Kicking Bird; Andrew Stumbling Bear, son of Stumbling Bear; Wood Takequa, grandson of Painted Lips; Knox Takawana, grandson of Elk Cud; Albert at-tock-nie, grandson of Ten Bears; Tenbears the 2nd, 8 years old, great grandson of Ten Bears.

Soldiers ..... Troop A, 2nd U. S. Cavalry

Directors of the Scene ..... A. L. Orr, C. L. Forsyth

## FINALE

After the treaty is signed the entire group of actors in the pageant returns to the pageant field as the flag is raised and sing two stanzas of "America." The audience is asked to stand and join with the pageant actors in the signing of our national hymn.

## MEDICINE LODGE INDIAN PEACE TREATY ASSOCIATION

### OFFICERS

President ..... John C. Best  
General Manager ..... Riley W. MacGregor  
1st Vice-President ..... Samuel Griffin  
2nd Vice-President ..... J. H. Trice  
3rd Vice-President ..... L. W. Fullerton  
Secretary ..... Mrs. J. C. Hinshaw  
Treasurer ..... Lloyd Davis  
Historian ..... Mrs. Geo. Hibbard

### EXECUTIVE COMMITTEE

The Officers, and:  
Mrs. Samuel Griffin  
Mrs. Geo. Horney  
Miss Rachel Nixon  
Dr. Hardin Gilbert  
J. F. Groom  
I. V. Martin  
H. A. Tedrow

### CHAIRMEN OF COMMITTEES

Reception ..... Dr. Hardin Gilbert  
Advertising ..... J. C. Hinshaw  
Concessions ..... Arthur A. Martin  
Finance ..... Samuel Griffin  
Traffic ..... H. A. Tedrow  
Pageant ..... Miss Rachel Nixon  
Indians ..... J. H. Trice  
Indian Village ..... Dr. M. D. Serrot  
Membership ..... Dr. L. L. Osborn  
Pageant Grounds ..... R. H. Dawson  
Music ..... Mrs. Samuel Griffin  
Costume ..... Mrs. L. A. Tilton

# INDIANS

THESE INDIANS ARE PRESENT AND TAKING PART  
IN THE CELEBRATION:

## KIOWAS

- Descendants of Treaty Signers  
Henry Pauker  
Perry Pauker  
Frankie Pauker  
Bessie Pauker  
Mrs. Eddle Potie
- Descendants of Stumbling Bear  
Andrew Stumbling Bear  
Gap kaw go  
Ah ko yah  
Mrs. Apekaum
- Descendants of Lone Bear  
Mammedaty  
Lone Bear  
Tane Quote  
E. Ray bo  
Klowa Charley
- Descendants of Crow Bonnet  
Do dog abo  
Mina Domah  
Goomtigh
- Descendants of Bear Lying Down  
Kaumahty (Red Elk)  
Emauah, Edna  
Barnum Emauah  
Sallie Emauah
- Descendants of Sitting Bear  
Orlan Given  
Man tapt pah ky  
Frank Given  
Komesataddle  
Muskogee  
Ko koe
- Descendants of White Bear  
Auch chl ah  
Ahtone ah  
Saw ka pa to
- Descendant of Black Eagle  
Max Frizzlehead
- Descendants of Kicking Bird  
Amy Sankadoto  
May Sankadoto  
Tah @  
Mrs. Sam Ahtone
- Descendants of Spoiled S. Blanket  
Emauah  
Alma Big Tree  
Marietta Big Tree
- Descendants of Woman Heart  
Pauker  
Helen Cody  
Albert Cody

## CHEYENNES

Coyote and family  
Tarry Black and family  
Bobtail Wolf and family  
Yellow Eagle and family  
Jay Black and family  
Alfred Wilson and family  
Clark Starr and family  
A. Gilbert and family  
Black Owl and family  
Mad Bull and family  
Red Bird and family  
Night Walker and family  
Mack Haag and family

## ARAPAHOES

Two Lances and wife  
Ute and wife  
Little Raven and wife, son of sign-  
er, (Little Raven)  
Striking First and wife  
Ira Sankey and wife  
White Shirt and wife  
Amick Talibear and wife, grandson  
of signer (Tall Bear)  
Frank Sweezy and wife, wife grand-  
daughter of signer (Storm)  
Young Bear  
Fred Sweezy  
Plenty Bears  
William Meeks, grandson of signer  
(Spotted Wolf)  
Jas. R. Hutchinson, son of signer,  
(Young Colt)  
Bret Rising Bear,  
Guy Lumpmouth  
Luther B. Good  
Walter Finley  
Edna Lumpmouth, great grand-  
daughter of Jno. Smith, Interp.  
Night Old Woman  
Joe Night and wife  
Crooked Star, B. M., granddaughter  
of signer (Yellow Bear)  
Francis Charcoal, grandson of sign-  
er (Bird Chief)  
Eva Rodgers, Potal, daughter of  
signer (Big Mouth)  
Robt. Sankey, grandson of signer  
(White Rabbit)  
Jesse Rowledge, Authorized Arapa-  
ho Representative.

## COMANCHES

Wood Take qua, grandson of Paint-  
ed Lips  
Knox Takawanna, grandson of Elk  
Cud  
Albert at-Toch-nie, grandson of Ten  
Bears  
Ten Bears, 2nd, 8 year old great  
grandson of Chief Ten Bears.

DO NOT FAIL TO VISIT THE INDIAN VILLAGE  
DURING YOUR STAY IN MEDICINE LODGE