

periodic observances, such as the "lament" for the dead, particularly the dead chiefs, in early spring; the salmon dance, when the salmon begin to run in April, and the berry dance, when the wild berries ripen in autumn. The description of the ceremonial of the salmon

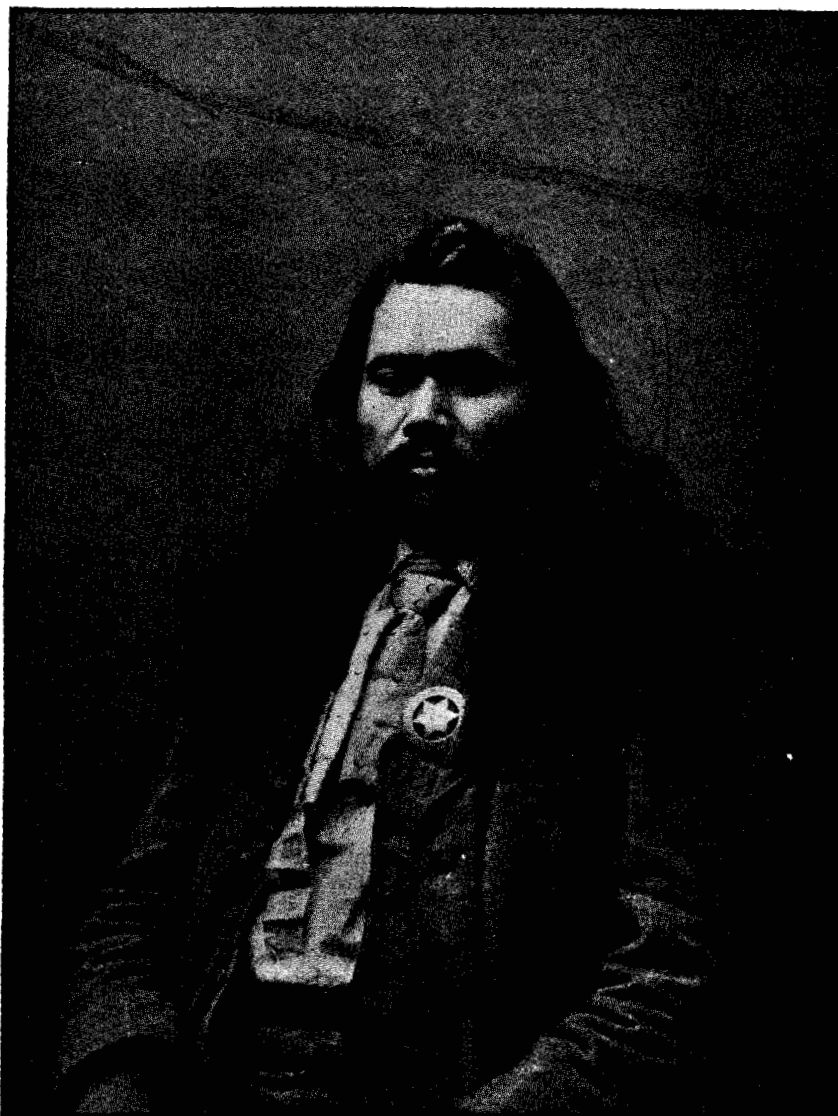


FIG. 65.—Charles Ike, Smohalla interpreter.

dance will answer for the others, as it differs chiefly only by the addition of the feast.

As already stated, the house has the door at the eastern end, as is the common rule in all Indian structures. On the roof, at the eastern